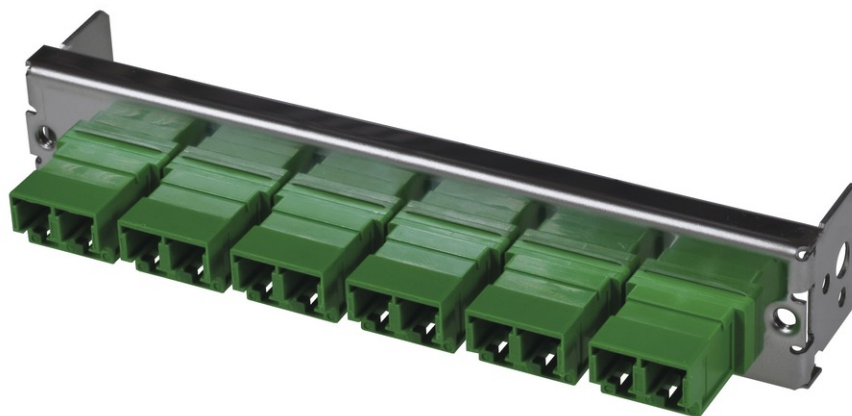


tML<sup>®</sup> - partial front panel with 6x LC APC Duplex OS2 green for Rack Mount Enclosure 1U



## tML<sup>®</sup> Xtended

tML<sup>®</sup> Xtended is a patented, modular cabling system consisting of the three key components module, trunk cable and rack mount enclosure. The system components are 100 percent manufactured, pre-assembled and tested in Germany. They enable plug-and-play installation on site – especially in data centres, but also in industrial environments – within the shortest possible time. Heart of the system are the rear MPO/MTP<sup>®</sup> 12 fiber and Telco connectors, which can be used to connect at least six or twelve ports at a time. Depending on the module configuration, transfer rates of up to 200G are currently possible with SR4. The fibre optic and TP modules can be used together in a module carrier with a very high port density. The tde offers its tML<sup>®</sup> cabling system as a proven tML<sup>®</sup> standard system and in the highly innovative variants tML<sup>®</sup> 24 system and now tML<sup>®</sup> 32 system for extreme scalability and very easy migration to higher transmission rates such as 40G, 100G, 200G and 400G.

The tML<sup>®</sup> - FO partial front panel is intended for the installation in the tML<sup>®</sup> Rack Mount Enclosure 1U (for 8 x Modules).



**tde<sup>®</sup> trans data elektronik GmbH**

**Headquarter address:**

Lingener Str. 2  
D-49626 Bippen/Ohrte  
Tel.: +49 5435 9511 0  
Fax.: +49 5435 9511 32

**Sales office address:**

Prinz-Friedrich-Karl-Str. 46  
D-44135 Dortmund  
Tel.: +49 231 8805 61 13  
Fax.: +49 231 8805 61 15

info@tde.de | www.tde.de

tML® - partial front panel with 6x LC APC Duplex OS2 green for Rack Mount Enclosure 1U

## Technical Data

Pre-mounted	6 x LC APC Duplex adapter (green)
	QS-Managementsystem ISO 9001, ISO 14001 and TL 9000

## tML® - partial front panels

Front Panel	Stainless steel
Dimensions	108 x 20 mm

## FO Adapters

Type	LC Duplex
Application	Singlemode OS2 APC
Design	One-Piece without flange
Connector style	SC Simplex
Color	Green
Material	Plastic
Sleeve	Zirkonia Staight Split
Shutter	--
Manufacturer	tde

## Product variants & accessories

Art.-No.	Description
TML-M06LCDKH-BG	tML® - partial front panel with 6x LC Duplex OM2 beige for Rack Mount Enclosure 1U
TML-M06LCDKH-BL	tML® - partial front panel with 6x LC Duplex OS2 blue for Rack Mount Enclosure 1U
TML-M06LCDKH-GN	tML® - partial front panel with 6x LC APC Duplex OS2 green for Rack Mount Enclosure 1U
TML-M06LCDKH-TK	tML® - partial front panel with 6x LC Duplex OM3 aqua for Rack Mount Enclosure 1U
TML-M06LCDKH-VI	tML® - partial front panel with 6x LC Duplex OM4 magenta for Rack Mount Enclosure 1U
TML-M06LCDS-LG	tML® - partial front panel with 6x LC Duplex w. shutter OM5 limegreen for Rack Mount Enclosure 1U