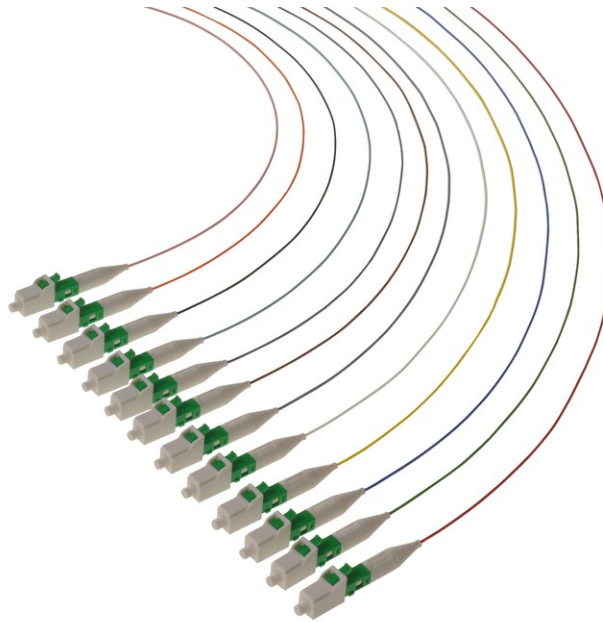


tde - FO set of Fiberpigtailes, 12x LC APC 9/125µ OS2 Length: 2m



## tde - Fiber Optic Assemblies

The tde patch and trunk cables are manufactured completely at the German facility in Ohrte. Production processes at tde meet the latest standards, and the company has one of the most up-to-date fiber optic assembly houses in Europe. Fiber optic patch cables and trunk cables are manufactured in many different configurations using highly automated processes on two independent mass production lines. The range of products on offer encompasses the entire spectrum of connector types available on the market. Production capacity is around 100,000 fiber optic connectors per month, and this can be ramped up easily whenever required. To guarantee consistently top quality, only the best components from renowned vendors are used. All tde production staff have the necessary qualifications and education, and have been well trained in using specialist technical equipment such as laser cleavers and glue-dispensing robots.

Each cable application is subjected to a full test procedure comprising interferometer measurements, insertion loss and return loss measurements and a final visual inspection to ensure that only 100% error-free products are shipped to the customer.

Products made by tde perform at least internationally accepted quality standards and norms. The quality management system is ISO 9001, ISO 14001 and TL9000 certified.



**tde<sup>®</sup> trans data elektronik GmbH**

**Headquarter address:**

Lingener Str. 2  
D-49626 Bippen/Ohrte  
Tel.: +49 5435 9511 0  
Fax.: +49 5435 9511 32

**Sales office address:**

Prinz-Friedrich-Karl-Str. 46  
D-44135 Dortmund  
Tel.: +49 231 8805 61 13  
Fax.: +49 231 8805 61 15

info@tde.de | www.tde.de

tde - FO set of Fiberpigtaills, 12x LC APC 9/125µ OS2 Length: 2m

## Technical Data

Packaging	12 pieces in the colours: red, green, blue, yellow, white, gray, brown, violet, aqua, black, orange, magenta
-----------	--

## FO Connectors

Connector Type	LC APC Unibody Simplex
Housing	Plastic, Green
Ferrule	Zirconia Straight Split, Spring-loaded Axially
Ferrule Hole	125.5 µ
Ferrule Concentricity	≤ 0.6 µ
Mating Cycles	500
Operating Temperature	-40°C up to +75°C
Strain Relief to	100 N
Manufacturer	tde

## Optical performance

Fiber	Type	Wavelength	Insertion loss typ.	Insertion loss max.	Return loss min.
9/125µ	LC APC	1550 nm	≤ 0.20 dB	0.45 dB	70 dB

## FO Cables

Tight Buffer	Low smoke (IEC 61034 and EN 50268) and free of halogens (LSOH)
	Non corrosive after IEC 60754-2 and EN 50267
	Flame resistant after IEC 60332-3C and EN 50266-2-4
	Completely dry design
	Free from metal, no grounding problems and potential differences
	Tight Buffer for simple and direct connector mounting

## Characteristics

Fiber Count	1 (Tight Buffer)
Core-Ø	0.9 mm
Coreweight	1 kg/km
Min. Bending radius - Installation	30 mm
Min. Bending radius - Operation	30 mm
Removal	1500 mm
Fire load	0.15 MJ/m
Temperature range - Installation	-5 to +50°C
Temperature range - Operation	-20 to +60°C
Temperature range - Transport / Lagerung	-25 to +70°C

tde - FO set of Fiberpigtaills, 12x LC APC 9/125 $\mu$  OS2 Length: 2m

## FO Fiber

Type	Corning Ultra SMF-28 <sup>®</sup> 09/125 $\mu$ OS2 singlemode fiber
Maximum Attenuation	At 1310 nm max. 0.32 dB/km At 1383 nm max. 0.32 dB/km At 1490 nm max. 0.21 dB/km At 1550 nm max. 0.18 dB/km At 1625 nm max. 0.20 dB/km
Attenuation vs. Wavelength	Range: 1285 - 1330 nm; Ref. $\lambda$ : 1310 nm; Max. Difference: 0.03 dB/km Range: 1525 - 1575 nm; Ref. $\lambda$ : 1550 nm; Max. Difference: 0.02 dB/km
Macrobend Loss	Mandrel Radius: 10mm; Number of Turns: 1; Wavelength: 1550nm; Induced Attenuation: $\leq 0.50$ dB Mandrel Radius: 10mm; Number of Turns: 1; Wavelength: 1625nm; Induced Attenuation: $\leq 1.5$ dB Mandrel Radius: 15mm; Number of Turns: 10; Wavelength: 1550nm; Induced Attenuation: $\leq 0.05$ dB Mandrel Radius: 15mm; Number of Turns: 10; Wavelength: 1625nm; Induced Attenuation: $\leq 0.30$ dB Mandrel Radius: 25mm; Number of Turns: 100; Wavelength: 1310nm, 1550nm, 1625nm; Induced Attenuation: $\leq 0.01$ dB
Point Discontinuity	Wavelength: 1310 nm; Point Discontinuity: $\leq 0.05$ dB Wavelength: 1550 nm; Point Discontinuity: $\leq 0.05$ dB
Cable Cutoff Wavelength ( $\lambda_{ccf}$ )	$\lambda_{ccf} \leq 1260$ nm
Mode-Field Diameter	At 1310 nm = $9.2 \pm 0.4$ $\mu$ m At 1550 nm = $10.4 \pm 0.5$ $\mu$ m
Dispersion	At 1550 nm = $\leq 18.0$ [ps/(nm*km)] At 1625 nm = $\leq 22.0$ [ps/(nm*km)]
	Zero Dispersion Wavelength ( $\lambda_0$ ): $1304 \text{ nm} \leq \lambda_0 \leq 1324 \text{ nm}$ Zero Dispersion Slope ( $S_0$ ): $\leq 0.092$ ps/(nm <sup>2</sup> *km)
Polarization Mode Dispersion (PMD)	PMD Link Design Value = $\leq 0.04$ ps/ $\sqrt{\text{km}}$ Maximum Individual Fiber = $\leq 0.1$ ps/ $\sqrt{\text{km}}$

## Dimensional Specifications

Fiber Curl	$\geq 4.0$ m radius of curvature
Cladding Diameter	$125.0 \pm 0.7$ $\mu$ m
Core-Clad Concentricity	$\leq 0.5$ $\mu$ m
Cladding Non-Circularity	$\leq 0.7\%$
Coating Diameter	$242 \pm 5$ $\mu$ m
Coating-Cladding Concentricity	$< 12$ $\mu$ m

## Environmental Specifications

Environmental Test	Test Condition	Induced Attenuation 1310 nm, 1550 nm & 1625 nm
Temperature Dependence	-60°C to +85°C	$\leq 0.05$
Temperature Humidity Cycling	-10°C to +85°C up to 98% RH	$\leq 0.05$
Water Immersion	23°C $\pm$ 2°C	$\leq 0.05$
Heat Aging	85°C $\pm$ 2°C	$\leq 0.05$
Operating Temperature Range	-60°C to +85°C	

## Mechanical Specifications

Proof Test	The entire fiber length is subjected to a tensile stress $\geq 100$ kpsi (0.69 GPa).
------------	--

## tde - FO set of Fiberpigtailes, 12x LC APC 9/125 $\mu$ OS2 Length: 2m

Length	Fiber lengths available up to 63.0 km/spool.
--------	--

### Performance Characterizations

Core Diameter	8.2 $\mu$ m
Numerical Aperture	0.14
Effective Group Index of Refraction	1310 nm: 1.4676 1550 nm: 1.4682
Fatigue Resistance Parameter (nd)	20
Coating Strip Force	Dry: 0.6 lbs (3N) Wet: 14 days room temperature: 0.6 lbs (3N)
Rayleigh Backscatter Coefficient (for 1 ns Pulse Width)	1310 nm: -77 dB 1550 nm: -82 dB

### Product variants & accessories

Art.-No.	Description
L-LC/-12x09F00200	tde - FO set of Fiberpigtailes, 12x LC PC 9/125 $\mu$ OS2 Length: 2m
L-LC/-12x50F3-00200	tde - FO set of Fiberpigtailes, 12x LC 50/125 $\mu$ OM3 Length: 2m
L-LC/-12x50F4-00200	tde - FO set of Fiberpigtailes, 12x LC 50/125 $\mu$ OM4 Length: 2m
L-LCA/-12x09F00200	tde - FO set of Fiberpigtailes, 12x LC APC 9/125 $\mu$ OS2 Length: 2m