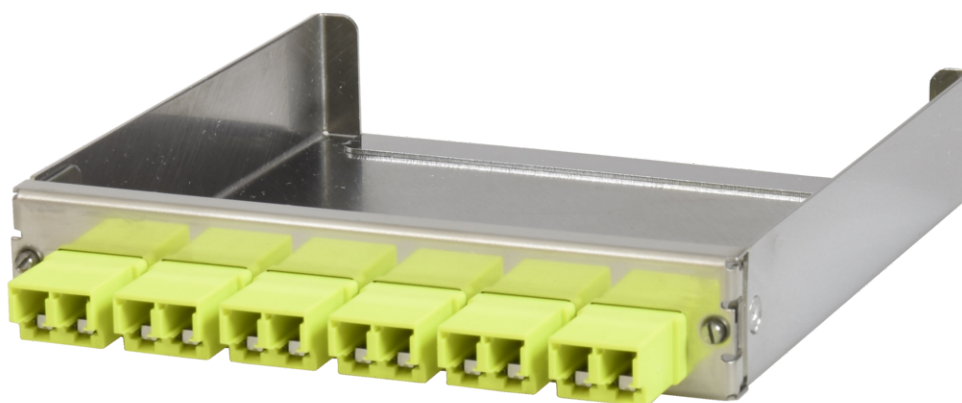


tML[®] - partial front panel with 6x LC Duplex w. shutter OM5 limegreen for Rack Mount Enclosure 1U
extendable



tML[®] - tde Modular Link

tML[®] is a patented, modular cabling system consisting of the three key components module, trunk cable and rack mount enclosure. The system components are 100 percent manufactured, pre-assembled and tested in Germany. They enable plug-and-play installation on site – especially in data centres, but also in industrial environments – within the shortest possible time. Heart of the system are the rear MPO/MTP[®] and Telco connectors, which can be used to connect at least six or twelve ports at a time. Depending on the module configuration, transfer rates of up to 200G are currently possible with SR4. The fibre optic and TP modules can be used together in a module carrier with a very high port density. The tde offers its tML[®] cabling system as a proven tML[®] standard system and in the highly innovative variants tML[®] Xtended, tML[®] 24 System and now tML[®] 32 System for extreme scalability and very easy migration to higher transmission rates such as 40G, 100G, 200G and 400G.

The tML[®] - FO partial front panel is intended for the installation in the tML[®] Rack Mount Enclosure 1U extendable (for 8 x Modules).



tde[®] trans data elektronik GmbH

Headquarter address:

Lingener Str. 2
D-49626 Bippen/Ohrte
Tel.: +49 5435 9511 0
Fax.: +49 5435 9511 32

Sales office address:

Prinz-Friedrich-Karl-Str. 46
D-44135 Dortmund
Tel.: +49 231 8805 61 13
Fax.: +49 231 8805 61 15

info@tde.de | www.tde.de

tML[®] - partial front panel with 6x LC Duplex w. shutter OM5 limegreen for Rack Mount Enclosure 1U extendable

Technical Data

| | |
|-------------|---|
| Pre-mounted | 6 x LC Duplex adapter (limegreen) |
| | QS-Managementsystem ISO 9001, ISO 14001 and TL 9000 |

| | |
|-------------|------------------------|
| Box | Galvanized steel sheet |
| Front Panel | Stainless steel |
| Dimensions | 110 x 108 x 20 mm |

FO Adapters

When the connector is inserted into the adapter it compresses the springs, opening the internal shutter. The internal shutter opens, and due to the special design of the shutter, it will not touch the ferrule end face. As the connector is removed from the adapter, the shutter spring automatically returns the internal shutter to the closed position.

| | |
|---------------------------------|--------------------------|
| Type | LC Duplex |
| Application | Multimode OM5 |
| Design | One-Piece without flange |
| Connector style | SC simplex |
| Color | Limegreen |
| Housing material | Plastic |
| Sleeve | Zirkonia Straight Split |
| Self-closing shutter material | Metal |
| Self-closing shutter protection | Dust and laser light |
| Manufacturer | tde |

Product variants & accessories

| Art.-No. | Description |
|-------------------|--|
| TML-M06LCDH-BL-A8 | tML [®] - partial front panel with 6x LC Duplex SM blau for Rack Mount Enclosure 1U extendable |
| TML-M06LCDH-GN-A8 | tML [®] - partial front panel with 6x LC Duplex SM green for Rack Mount Enclosure 1U extendable |
| TML-M06LCDH-TK-A8 | tML [®] - partial front panel with 6x LC Duplex OM3 aqua for Rack Mount Enclosure 1U extendable |
| TML-M06LCDH-VI-A8 | tML [®] - partial front panel with 6x LC Duplex OM4 magenta for Rack Mount Enclosure 1U extendable |
| TML-M06LCDS-LG-A8 | tML [®] - partial front panel with 6x LC Duplex w. shutter OM5 limegreen for Rack Mount Enclosure 1U extendable |