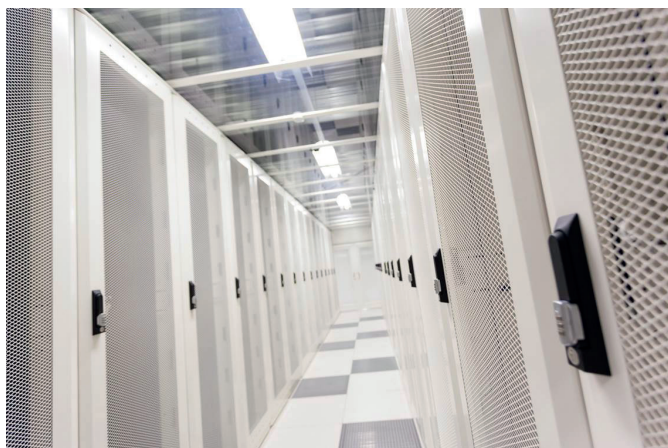


## Reference report

tde<sup>®</sup> provides cable system for innovative data centre in the Netherlands

# High-tech data centre Evinova benefits from tde<sup>®</sup>'s expertise



**Many large-scale enterprises rely on external data centres where they can rent virtual capacities instead of operating and continually expanding their own data centre. Evinova is the name of the new highly innovative data centre in the Netherlands, which stores and secures its customers' data with high-tech safety devices. tde – trans data elektronik GmbH was involved in setting up the data centre: they provided advice on passive network infrastructure in advance and then supplied the tML<sup>®</sup> cabling system which they also installed partially.**

The plan was ambitious. At the gates of Amsterdam an efficient data centre with highest security standards and a wide range of services was to be developed. Now it is clear: The aim was reached. On 23 May 2013 Evinova opened its digital doors in the small Dutch town of Meppel. On 1000 m<sup>2</sup> and four floors an innovative data centre was established, which secures its customers' data and applications with high tech security devices.

### Solutions for technical infrastructure

Evinova offers intelligent solutions regarding technical infrastructures. The products and services offered range from data storage to disaster recovery to server based computing. In order to cope with such a vast range of services the efficient data centre had to be minutely planned.

Initially, the company Custom Connect, which offers individual network services regarding data, consulting and IP solutions, lent its support. For Evinova Custom Connect designed a redundant network solution and connected it to the data centre in Amsterdam. As a consequence, the companies have a carrier neutral data centre at hand independent of all network providers or hard and software producers. „We are experiencing a growing demand for services in the data centre which are not limited to a few carriers only“, Olav van Doorn, executive director of Custom Connect says.

### Consultation prior to the building phase

Since fast connections at an efficient data centre require the best cabling solutions tde – trans data elektronik GmbH was at hand with help and advice even before the building phase of Evinova began. tde's partner company in the Netherlands, Phocena, remained in close contact to the planers. „The data centre was to offer its future customers, especially large-scale enterprises, the best conditions. Since in this case even nanoseconds can be decisive Evinova wanted an expert in cabling systems on board“, Frank de Bruijn from Phocena explains. Therefore, tde took on the planning of the passive network infrastructure. Before the data centre was built the plans were made available so that it was possible to determine the first specifics. The tde experts identified the lengths for the budgeting of the network via laser measurement and advised those responsible for Evinova on the planning.

## Reference report



„In order to achieve the high power density of the data centre the cabling requires the utmost attention down to the smallest detail“, André Engel, CEO of tde – trans data elektronik GmbH, explains.

### Precise determination of length prevents tangled cables

Especially when it comes to the plug-and-play cabling system tML® the precise measuring of length is decisive: after exactly recording the key facts on site specific tde tools enable the final length to be determined mostly automatically on the computer. „Our experience shows that customers add several metres out of fear, which results in excess cable length“, tde CEO André Engel says. In the case of Evinova, tde employees calculated the exact measurements therewith showing the advantages of space-saving cabling.

tde was especially in charge of the ground between the meet-me-room and other points in the data centre. The modular tML®-system with fibre optic and copper cable solutions was popular here. After a short briefing by tde specialists, Evinova employees were able to quickly install the plug-and-play cabling system with its pre-assembled system components by themselves.

### tML®-system for high speed routes

The result convinced Eric Mink, operations manager at Evinova: „We wanted the highest quality for our new data centre and thanks to tde we achieved this aim. When it comes to high speed routes we have to make sure that the components meet the requirements of the high power density. The tML®-system is exactly what we needed“, Mink confirms. André Engel is also delighted about the cooperation with the Dutch data centre: „We were again able to demonstrate that our systems and products are especially optimised for high performance connectivity.“