

## Reference report

**tde – trans data elektronik GmbH provides cabling for new MARKANT AG data centre**

## A higher packing density is not possible



**The MARKANT Handels und Service GmbH commissioned tde – trans data elektronik as general contractor for the cabling of the new data centre of MARKANT AG. After the completion of this complex project everyone involved from the MARKANT Group was fully satisfied: tde manufactured and delivered the new components in the shortest time and the system offers an extremely high packing density. Moreover, the new cabling infrastructure scores with high availability, scalability and reliability.**

When MARKANT decided to build a new data centre the new cabling solution was to be state-of-the-art, flexible and clearly structured. Building a new data centre was inevitable due to several reasons: Greater demands on technology and capacity had led to a greatly increased number of server systems and devices contained therein and thus also to an increased need for electricity and air conditioning. The old data centre had reached the limits of its capacity. Regarding future requirements, the old data centre would not have been able to provide the necessary amount of network connections and meet the future demands on data transmission and security.

When choosing the new cabling solution, high packing density and maximum flexibility were one of the most important prerequisites. Moreover, the new system was to ensure faster transmission rates at maximum availability and safety.

### All-round package: From planning through to commissioning

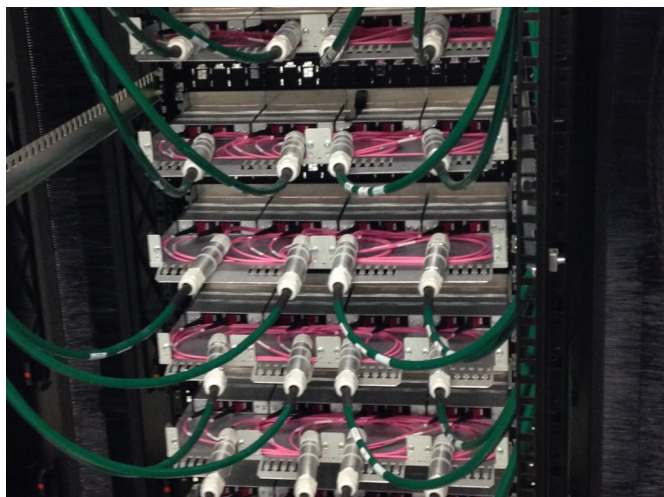
The network specialist tde – trans data elektronik devised the perfect solution for MARKANT. “tde caught our attention at an event in Stuttgart,” Lars Kleiner, Head of Network Services and IT-Security at MARKANT Handels und Service GmbH remembers. “We took a look at all network component suppliers there. tde convinced us with its high-quality product range, which is designed for modularity and high packing density through and through.”

Consequently, MARKANT commissioned tde as general contractor to set up the cabling for the new data centre. tde was responsible for the entire project from planning through to completion. The network expert had to set up a connection between the old and the new data centre, among others. For this purpose, tde initiated the insertion of 2 x 288 glass fibres.

### High port density – fast installation

The task was complex: The new cabling solution had to meet manifold requirements. Accordingly, MARKANT opted for the tML – tde Modular Link. Thanks to plug-and-play, twisted pair and fibre optics cable systems can be quickly installed using the factory-assembled and factory-tested system components. Finished high-capacity and high-density trunk cables can be easily connected via distribution modules. Fibre optics and TP modules can be easily combined within one height unit in a

## Reference report



panel. “In this way, a considerably smaller number of height units is required and a flexible expansion according to specific needs is possible. Additional height units are often not required,” says André Engel, CEO at tde.

tde installed an impressive 2,352 copper ports and 2,304 fibre optic ports on 121 height units at the new MARKANT data centre. With this number of height units, the tML offers a maximum capacity of up to 5,808 copper ports and up to 11,616 glass fibre ports (LC Duplex). “In partly equipping selective height units, we were able to create significant reserves for a further flexible expansion – this is unique on the market,” André Engels explains and adds: “Our tML system is made for this and is a safe investment protection.” This is possible thanks to the plug-and-play structure of the tML, which allows network technicians to carry out changes to the network in no time. Already made investments are protected and the environment is preserved thanks to recyclable system components.

### The all-important element: Quickly, safely and flexibly mounted connections

Time is money. This holds true of every IT cabling solution.

Short production and installation times were another reason for MARKANT to opt for tde. In only few days, the network expert is able to produce and deliver the cables as required. “Pre-assembled components tailored to individually required lengths and sizes and very short delivery times were decisive arguments for us to choose tde,” says Lars Kleiner.

As manufacturer of fibre optic and copper technology, tde offers the right solution for every need. Both the fibre optic and copper cable applications are made in-house and are exclusively produced in Germany. Every single cable application is subjected to a 100 percent inspection procedure including interferometer measurements, insertion loss and return loss measurements as well as a final visual inspection. In this way, tde guarantees that only impeccable products are used.

### Modular data centre cabling with plug-and-play

“Especially the trunk technology was very appealing to us. A very slim cable construction provides numerous connections. Technicians merely have to lay out a single cable and in only one plug-in step numerous connections can be made at once,” says Lars Kleiner.

Thanks to tde’s cabling system, MARKANT is well equipped for the future. If necessary, the network can be quickly and flexibly expanded by way of plug-and-play. Simple scalability paves the way for further growth – and for renewed cooperation. Should MARKANT require an expansion, the service company will again seek the cooperation with tde.

### About MARKANT Handels und Service GmbH

MARKANT Handels und Service GmbH is a fully-owned subsidiary of MARKANT AG, Pfäffikon, Switzerland. On behalf of MARKANT AG, it acts as operational headquarters for

## Reference report

MARKANT services and as European competence centre for all country organisations of MARKANT. As service centre, MARKANT Handels und Service GmbH fosters the potential of over 100 wholesale and retail companies on behalf of MARKANT AG.

MARKANT AG is the largest service cooperation in the food trade in Europe with several decades of market experience. MARKANT's partners are primarily trading companies in the private sector who trade in goods in the food and non-food area. MARKANT supports its partners in their autonomous economic freedom so that they can continue to trade with enduring success and in complete autonomy now and in the future. As a Swiss company, MARKANT feels essentially committed to embracing values such as love of freedom and neutrality. For more information, visit [www.markant.com](http://www.markant.com).

### About tde – trans data elektronik GmbH

For 25 years the tde- trans data elektronik GmbH, an internationally successful company, has specialised in the development and production of scalable cabling systems for highest packing density. Also the nuclear research centre CERN relies on the know-how of the leading company in multi-fibre techniques (MPO). The portfolio "Made in Germany" contains complete system solutions with a focus on Plug&Play for high speed applications in the field of Datacom, Telecom, industry, medical and defence. With its own service department tde offers planning and installation services from one source and supports the "European Code of Conduct" when it comes to energy efficiency in data centres. For more information visit: [www.tde.de](http://www.tde.de)