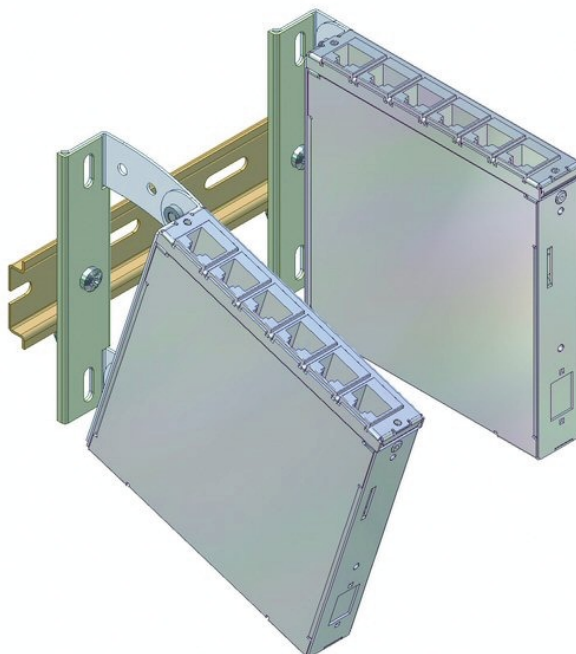


tML[®] - DIN Rail Mounting kit for up to 2 FO or TP Modules with adjustable angle



tML[®] tde Modular Link

tML[®] is a patented, modular cabling system consisting of the three key components module, trunk cable and rack mount enclosure. The system components are 100 percent manufactured, pre-assembled and tested in Germany. They enable plug-and-play installation on site – especially in data centres, but also in industrial environments – within the shortest possible time. Heart of the system are the rear MPO/MTP[®] and Telco connectors, which can be used to connect at least six or twelve ports at a time. Depending on the module configuration, transfer rates of up to 400G are currently possible with SR4. The fibre optic and TP modules can be used together in a module carrier with a very high port density. The tde offers its tML[®] cabling system as a proven tML[®] standard system and in the highly innovative variants tML[®] 12, tML[®] 24, tML[®] 32 and now tML[®] 24+ System for extreme scalability and very easy migration to higher transmission rates such as 40G, 100G, 200G, 400G and 800G and more.

tML[®] - DIN rail adapter is for the attachment of up to two tML[®] - modules conceives.



tde[®] trans data elektronik GmbH

Headquarter address:

Lingener Str. 2
D-49626 Bippen/Ohrte
Tel.: +49 5435 9511 0
Fax.: +49 5435 9511 32

Sales office address:

Prinz-Friedrich-Karl-Str. 46
D-44135 Dortmund
Tel.: +49 231 8805 61 13
Fax.: +49 231 8805 61 15

info@tde.de | www.tde.de

tML[®] - DIN Rail Mounting kit for up to 2 FO or TP Modules with adjustable angle

Technical Data

All existing tML[®] - FO or TP modules can be installed. Up to two equal or also different modules can be fastened on an adapter with in each case two screws. The modules are then adjustable in three different angles. The attachment at the DIN rail takes place via simple in-clicked.

Material	galvanized steel sheet
Size	Straight: 10.7 cm x 1.4 cm 1. Angle stage: 10.7 x 1,3 x 3.1 cm 2. Angle stage: 10.7 x 1.1 x 4.5 cm
Max. Angle	ca. 30°
	QS-Managementsystem ISO 9001, ISO 14001 and TL 9000

Product variants & accessories

Art.-No.	Description
TML-HU-AD-W	tML [®] - DIN Rail Mounting kit for up to 2 FO or TP Modules with adjustable angle