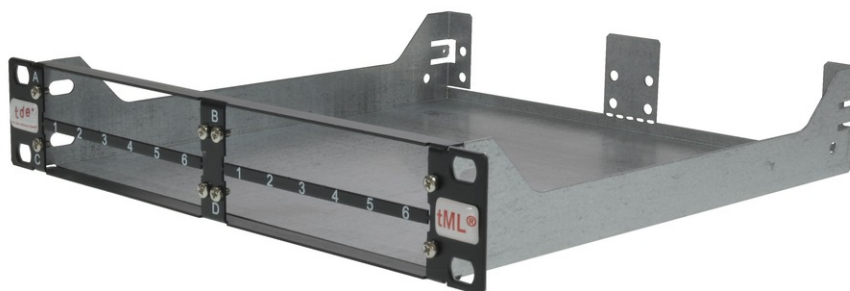


tML® - Rack Mount Enclosures 10"/1U stainless steel frontplate for 4 x modules



Note: pay attention to the colors specified in the item description

tML® tde Modular Link

tML® is a patented, modular cabling system consisting of the three key components module, trunk cable and rack mount enclosure. The system components are 100 percent manufactured, pre-assembled and tested in Germany. They enable plug-and-play installation on site – especially in data centres, but also in industrial environments – within the shortest possible time. Heart of the system are the rear MPO/MTP® and Telco connectors, which can be used to connect at least six or twelve ports at a time. Depending on the module configuration, transfer rates of up to 400G are currently possible with SR4. The fibre optic and TP modules can be used together in a module carrier with a very high port density. The tde offers its tML® cabling system as a proven tML® standard system and in the highly innovative variants tML® 12, tML® 24, tML® 32 and now tML® 24+ System for extreme scalability and very easy migration to higher transmission rates such as 40G, 100G, 200G, 400G and 800G and more.

The Rack Mount Enclosure 10"/1U is for the equip of up to 4 x tML® - modules with high component density.



tde® trans data elektronik GmbH

Headquarter address:

Lingener Str. 2
D-49626 Bippen/Ohrte
Tel.: +49 5435 9511 0
Fax.: +49 5435 9511 32

Sales office address:

Prinz-Friedrich-Karl-Str. 46
D-44135 Dortmund
Tel.: +49 231 8805 61 13
Fax.: +49 231 8805 61 15

info@tde.de | www.tde.de

tML[®] - Rack Mount Enclosures 10"/1U stainless steel frontplate for 4 x modules

Technical Data

Box	Galvanized steel sheet with grounding screw
Frontplate	Stainless steel
Inscription	numbering in the silk-screen printing on the centre web
Equip	up to 4 modules, i.e. up to 24 RJ45-Ports or 288 fibres with MPO 72-Fibre technology. The combination of different modules is possible. For modules with SC duplex adapters the middle bar must be removed.
Strain Relief	optionally over cable entries for PG screw connections, cable fan outs or cable straps
Cable entry	variable over up to two cable entry sheet metals (cable entries and blind plates are separately to order)
Measures	10", 1U, depth 24cm (without cable entry)
	QS-Managementsystem ISO 9001, ISO 14001 and TL 9000

Product variants & accessories

Art.-No.	Description
TML-10/1HE-4-M	tML [®] - Rack Mount Enclosures 10"/1U stainless steel frontplate for 4 x modules
TML-10/1HE-4-M-S	tML [®] - Rack Mount Enclosures 10"/1U black frontplate for 4 x modules
TML-M-BLIND	tML [®] - Module Blind Plate for Rack Mount Enclosure 10" or 19"/1U
TML-M-STUETZE	tML [®] - Blind Module for Rack Mount Enclosure 1U