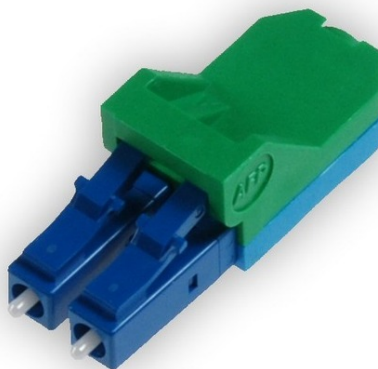


tde - Secure LC Blind Connector for Port Locking (yy-Colour Code)



tde - Secure Patchcords with locking feature

The feature of the SLC plug is simple: If one puts the plug into a standard LC adapter, this engages there firmly and is surely locked. The disconnecting is only possible with the use of a special extraction tool. Then no danger exists that unauthorized plugs are unlocked. Eight different key configurations are available as standard options.



tde[®] trans data elektronik GmbH

Headquarter address:

Lingener Str. 2
D-49626 Bippen/Ohrte
Tel.: +49 5435 9511 0
Fax.: +49 5435 9511 32

Sales office address:

Prinz-Friedrich-Karl-Str. 46
D-44135 Dortmund
Tel.: +49 231 914 36 99
Fax.: +49 231 914 31 29

info@tde.de | www.tde.de

tde - Secure LC Blind Connector for Port Locking (yy-Colour Code)

Technical Data

Connector	Secure LC Duplex
Connector Colour	yy = WS (white), GR (grey), GN (green), BL (blue), GE (yellow), RT (red), OR (orange), SW (black)

Product variants & accessories

Art.-No.	Description
L-SLC-BLIND-yy	tde - Secure LC Blind Connector for Port Locking (yy-Colour Code)
L-SLC/SLC09DRxxx-yy	tde - Secure Patch cord LC/LC 9/125 μ Duplex Round Cable LSOH OS2, length: xxx in m
L-SLC/SLC50D3Rxxx-yy	tde - Secure Patch cord LC/LC 50/125 μ Duplex Round Cable LSOH OM3, length xxx in m
L-SLC-TOOL-yy	tde - Secure LC Extraction Tool (yy-Colour Code)