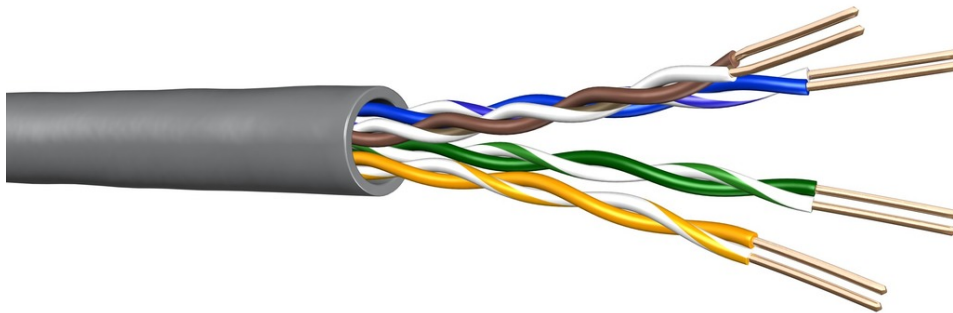


Draka - UC300 24 Cat.5e U/UTP 4P (LSHF)



## UC Data Cable - Draka Office Network Solution

Symmetrical 100  $\Omega$  data transmission cables from Universal Cable line UC.. acc. to ISO/IEC 11801, EN 50173 and EIA/TIA 568A are used for high speed data transmission, mainly in secondary and horizontal cabling in standardised, manufacturer-independent local networks (LAN), ranging from Token Ring, Ethernet, ISDN, TPDDI, Fast-Ethernet 100Base-TX to ATM and Gigabit-Ethernet 1000Base-T and CATV. All shielded cables of line UC400 and up are ready for 10 Gigabit Ethernet (IEEE802.3: 10GBase-T).

### Application

Primary (Campus), Secondary (Riser), Tertiary (Horizontal)  
IEEE 802.3: 10Base-T; 100Base-T; 1000Base-T;  
IEEE 802.5 16 MB; ISDN; TPDDI; ATM  
Power over Ethernet (PoE) / PoE+

### Standards

EIA/TIA 568A;  
ISO/IEC 11801 2<sup>nd</sup> ed.; IEC 61156-5  
EN 50173; EN 50288-3-1  
IEEE 802.3at



**tde<sup>®</sup>** trans data elektronik GmbH

#### Headquarter address:

Lingener Str. 2  
D-49626 Bippen/Ohrte  
Tel.: +49 5435 9511 0  
Fax.: +49 5435 9511 32

#### Sales office address:

Prinz-Friedrich-Karl-Str. 46  
D-44135 Dortmund  
Tel.: +49 231 914 36 99  
Fax.: +49 231 914 31 29

info@tde.de | www.tde.de

## Draka - UC300 24 Cat.5e U/UTP 4P (LSHF)

### Flame resistance

LSHF IEC 60332-1; IEC 60754-2; IEC 61034; Class Eca

## Technical Data

### Construction

Conductor	bare copper wire Ø 0.5 mm (AWG24/1)
Insulation	Polyethylene, Ø 0.9 mm
Twisting	2 cores to the pair
Cable lay up	4 pairs to the core
Sheath	LSHF (FRNC, LSOH), grey RAL 7035

### Mechanical properties

Minimum bending radius	Without load	≥ 20 mm
	With load	≥ 40 mm
Temperature range	During operation	-20°C up to +60°C
	During installation	0°C up to +50°C

### Electrical properties at 20°C

DC loop resistance		≤ 192 Ω/km
Resistance unbalance		≤ 2%
Insulation resistance	500 V	≥ 2000 MΩ*km
Capacitance	800 Hz	Nom. 48 nF/km
Capacitance unbalance	pair to ground	≤ 1500 pF/km
Mean characteristic impedance	100 MHz	100 ± 5 Ω
Nominal velocity of propagation		approx. 67%
Propagation delay		Nominal ≤ 535 ns/100m
Delay skew		Nominal ≤ 20 ns/100m
Test voltage (DC, 1 min) Core/Core		1000 V
Coupling attenuation		≥ 40 dB

### Electrical Data (nominal) acc. to Cat.7 (at 20°C)

F	Attenuation	NEXT	PS-NEXT	ACR	PS-ACR	ELFEXT	PS-ELFEXT	Return loss
MHZ	dB/100m	dB	dB	dB/100m	dB/100m	dB/100m	dB/100m	dB
1.0	1.9	71	68	69.1	66.1	68	65	20
4.0	3.7	62	59	58.3	55.3	56	53	23
10.0	6	56	53	50	47.0	48	45	25
16.0	7.6	53	50	45.4	42.5	44	41	25
20.0	8.5	51	48	42.5	39.5	42	39	25
31.2	10.7	49	46	38.3	35.3	38	35	24

## Draka - UC300 24 Cat.5e U/UTP 4P (LSHF)

62.5	15.7	44	41	28.3	25.3	32	29	22
100.0	19.8	41	38	21.2	18.2	28	25	20
125.0	22.3	40	37	17.7	14.7	26	23	19
155.5	24.2	38	35	13.8	10.8	24	21	
175.0	25.7	37	34	11.3	8.3	23	20	
200.0	27.5	36	33	8.5	5.5	22	19	
250.0	29.5	35	32	5.8	2.8	20	17	
300.0	32.0	34	31	2.0	-1.0	16	13	

Outer diameter	5.0 mm
Fire load	336 MJ/km
	0.093 kWh/m
Weight	36 kg/km
Copper content	17.5
Tensile force	80 N

## Product variants & accessories

Art.-No.	Description
UC300-24-4P	Draka - UC300 24 Cat.5e U/UTP 4P (LSHF)