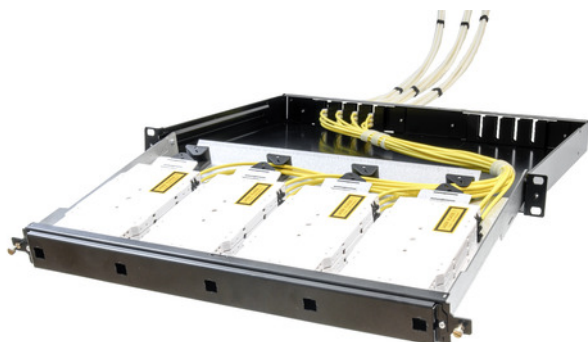


tML[®] - FO Master splice enclosure 19" 1U slide-out for up to 144 FO splices



tML[®] 24

tML[®] 24 is a patented, modular cabling system consisting of the three key components module, trunk cable and rack mount enclosure. The system components are 100 percent manufactured, pre-assembled and tested in Germany. They enable plug-and-play installation on site – especially in data centres, but also in industrial environments – within the shortest possible time. Heart of the system are the rear MPO/MTP[®] 24 fiber and Telco connectors, which can be used to connect at least six or twelve ports at a time. Depending on the module configuration, transfer rates of up to 400G are currently possible with SR4. The fibre optic and TP modules can be used together in a module carrier with a very high port density. The tde offers its tML[®] cabling system as a proven tML[®] standard system and in the highly innovative variants tML[®]Xtended and now tML[®] 32 for extreme scalability and very easy migration to higher transmission rates such as 40G, 100G, 200G and 400G.

tML[®] - Master splice enclosure is intended for the integration of up to 144 FO splices. Up to 12x MPO/MTP[®]Pigtails with altogether 144 fibers can be spliced with space-saving at an indoor/outdoor cable. In this way can be combined the favourable modularity of the tML[®] - system with conventional splice technology, where before the lengths are not yet determinable. The master splice enclosure is compatible to all tML systems.



tde[®] trans data elektronik GmbH

Headquarter address:

Lingener Str. 2
D-49626 Bippen/Ohrte
Tel.: +49 5435 9511 0
Fax.: +49 5435 9511 32

Sales office address:

Prinz-Friedrich-Karl-Str. 46
D-44135 Dortmund
Tel.: +49 231 8805 61 13
Fax.: +49 231 8805 61 15

info@tde.de | www.tde.de

tML[®] - FO Master splice enclosure 19" 1U slide-out for up to 144 FO splices

Application fields: Datacenter, Telecom, FTTx

Product characteristics:

- Store of the splices from external/interior cables to MTP[®]/MPO Pigtailes
- Integrated fan-out unit for distribution cable
- Modular structure with standard splice cassettes
- Cover is removable for the installation
- Slide-out and tiltable
- Drawer for excess length
- Small space requirement of 144 splices on 1HE
- Small depth of max. 350mm
- Optionally with front-mounted patch cord management panel
- Pre installed MTP[®]/MPO Pigtailes are preparatory for the splice

Technical Data

Housing	Galvanized Sheet Steel
Color	Black similar RAL 9005
Configuration	4, 8 or 12 MPO/MTP [®] Pigtailes each with 12 fibers. Corresponding the appropriate number of splice cassettes
Cable entry	On the back, removable with integrated cable allocation incl. 12 empty tubes for up to 144 fibers
Dimensions	19", 1HE, 300mm deep without cable entry, 350mm with cable entry
	QS-Managementsystem according to ISO 9001, ISO 14001 and TL 9000

xxx = stands for the number of fibers (048, 096, 144)

yyyy = stands for the fibertype ("50G" = 50/125µ OM2, "50G3" = 50/125µ OM3, "62G" = 62.5/125µ, "09E" = 9/125µ)

z = stands for the option patch cord management panel ("1" = with patch cord management panel, without rings, "0" = without patch cord management panel)

Product variants & accessories

Art.-No.	Description
L-CLEAN-IBC-MPO	FO IBC [™] Brand Cleaning Tool for MPO connectors
TML-MSPxxxMPyyyy-z	tML [®] - FO Master splice enclosure 19" 1U slide-out for up to 144 FO splices
TPM-RP-BGL-100-K	tPM - FO Patch Cord Management ring plastic, 100mm, black
TPM-RP-BGL-110	tPM - TP Patch Cord Management ring metal, 110mm
TPM-RP-BGL-56-K	tPM - FO Patch Cord Management ring plastic, 56mm, black
TPM-RP-BGL-75	tPM - TP Patch Cord Management metal ring, 75mm