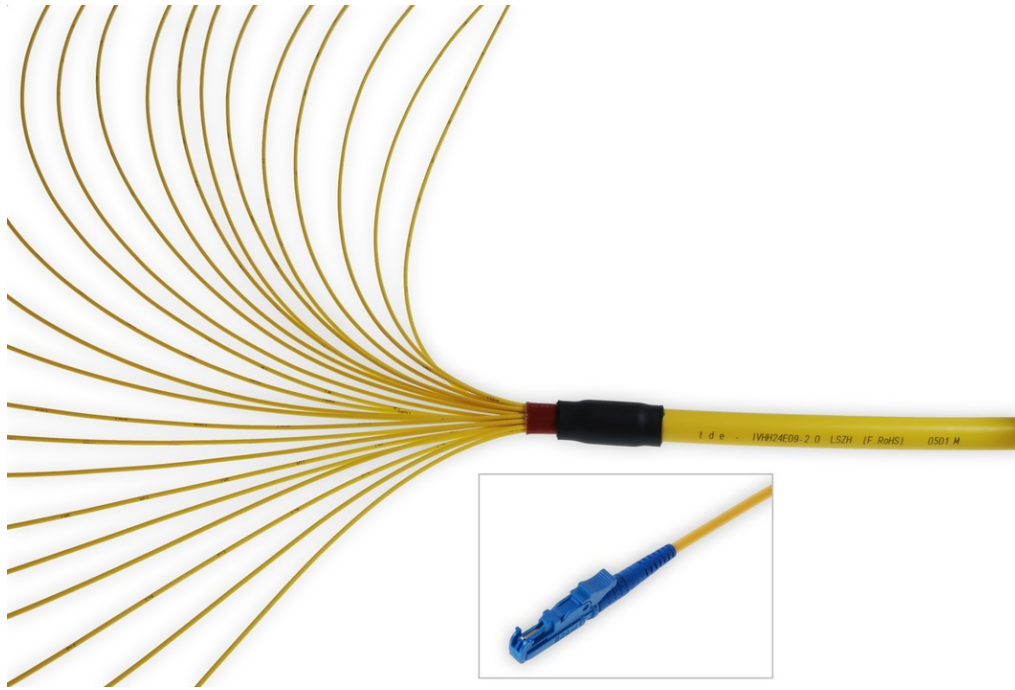


FO BreakoutI cable E2000/E2000 24E9/125 μ OS2 LSHF, Length: xxxx



tde - Fiber Optic Assemblies

The tde patch and trunk cables are manufactured completely at the German facility in Ohrte. Production processes at tde meet the latest standards, and the company has one of the most up-to-date fiber optic assembly houses in Europe. Fiber optic patch cables and trunk cables are manufactured in many different configurations using highly automated processes on two independent mass production lines. The range of products on offer encompasses the entire spectrum of connector types available on the market. Production capacity is around 100,000 fiber optic connectors per month, and this can be ramped up easily whenever required. To guarantee consistently top quality, only the best components from renowned vendors are used. All tde production staff have the necessary qualifications and education, and have been well trained in using specialist technical equipment such as laser cleavers and glue-dispensing robots.

Each cable application is subjected to a full test procedure comprising interferometer measurements, insertion loss and return loss measurements and a final visual inspection to ensure that only 100% error-free products are shipped to the customer.

Products made by tde perform at least internationally accepted quality standards and norms. The quality management system is ISO 9001, ISO 14001 and TL9000 certified.



tde[®] trans data elektronik GmbH

Headquarter address:

Lingener Str. 2
D-49626 Bippen/Ohrte
Tel.: +49 5435 9511 0
Fax.: +49 5435 9511 32

Sales office address:

Prinz-Friedrich-Karl-Str. 46
D-44135 Dortmund
Tel.: +49 231 914 36 99
Fax.: +49 231 914 31 29

info@tde.de | www.tde.de

FO BreakoutI cable E2000/E2000 24E9/125μ OS2 LSHF, Length: xxxx

Technical Data

FO Connectors

Type	E2000 PC
Ferrule	Ceramic
Ferrule Hole	125.5 μ
Ferrule Concentricity	≤ 0.6 μ
Connector Colour	Blue
Lever Colour	Blue
Boot colour	Blue
Manufacturer	RDM

Optical performance

Fiber	Type	Wavelength	Insertion loss typ.	Insertion loss max.	Return loss min.
9/125μ	E2000 PC	1550 nm	≤ 0.20 dB	0.45 dB	45 dB

FO Cables

Cable Data

Type	IVHH24E9/125
Fiber Amount	24
Construction	4 x 6
Outer Diameter	17.4 mm
Tolerance	± 0.5 mm

Subcable Diameter	2.0 (± 0.1mm)
Strength Members	Aramid yarns
Outer Jacket	LSOH (Halogen free, low smoke, flame retardant thermoplastic compound)
Jacket Colour	Yellow
Standard printing	"t d e – IVHH24E09-2.0" and sequential meter marking + Lot number

Mechanical/Thermal Characteristics

Fiber Amount	24
Weight	235 kg/km
Tensile load	3200 N
Bending radius	20 x outer diameter
Operating temperature	-5°C to + 60°C
Fire resistance	Pass EN 50266, IEC 60332-3
Halogen content	Free EN 50267, IEC 60754
Smoke density	Low EN 50268, IEC 61034-1/2

FO BreakoutI cable E2000/E2000 24E9/125 μ OS2 LSHF, Length: xxxx

Special features

Characteristics	Fiber and aramid yarn free movable in the compound
Identification	Numbers, min. every 25cm on subcables

FO Fiber

Type	Corning SMF-28e+ [®] 09/125 μ OS2 G.652.D singlemode fiber
Maximum Attenuation	At 1310 nm max. 0.33 - 0.35 dB/km At 1383 \pm 3 nm max. 0.31 - 0.35 dB/km At 1490 nm max. 0.21 - 0.24 dB/km At 1550 nm max. 0.19 - 0.20 dB/km At 1625 nm max. 0.20 - 0.23 dB/km
Attenuation vs. Wavelength	Range: 1285 - 1330 nm; Ref. λ : 1310 nm; Max. Difference: 0.03 dB/km Range: 1525 - 1575 nm; Ref. λ : 1550 nm; Max. Difference: 0.02 dB/km
Macrobend Loss	Mandrel Diameter:32mm; Number of Turns: 1; Wavelength: 1550nm; Induced Attenuation: \leq 0.03 dB Mandrel Diameter:50mm; Number of Turns: 100; Wavelength: 1310nm; Induced Attenuation: \leq 0.03 dB Mandrel Diameter:50mm; Number of Turns: 100; Wavelength: 1550nm; Induced Attenuation: \leq 0.03 dB Mandrel Diameter:60mm; Number of Turns: 100; Wavelength: 1625nm; Induced Attenuation: \leq 0.03 dB
Point Discontinuity	Wavelength: 1310 nm; Point Discontinuity: \leq 0.05 dB Wavelength: 1550 nm; Point Discontinuity: \leq 0.05 dB
Cable Cutoff Wavelength (λ_{ccf})	$\lambda_{ccf} \leq 1260$ nm
Mode-Field Diameter	At 1310 nm = 9.2 \pm 0.4 μ m At 1550 nm = 10.4 \pm 0.5 μ m
Dispersion	At 1550 nm = \leq 18.0 [ps/(nm*km)] At 1625 nm = \leq 22.0 [ps/(nm*km)]
	Zero Dispersion Wavelength (λ_0): 1310 nm $\leq \lambda_0 \leq$ 1324 nm Zero Dispersion Slope (S_0): \leq 0.092 ps/(nm ² *km)
Polarization Mode Dispersion (PMD)	PMD Link Design Value = \leq 0.06 ps/ \sqrt km Maximum Individual Fiber = \leq 0.1 ps/ \sqrt km
Norm	ITU-T Recommendation G.652 (Tables A, B, C, and D) IEC Specifications 60793-2-50 Type B1.3 TIA/EIA 492-CAAB Telcordia Generic Requirements GR-20-CORE ISO 11801 OS2

Dimensional Specifications

Fiber Curl	\geq 4.0 m radius of curvature
Cladding Diameter	125.0 \pm 0.7 μ m
Core-Clad Concentricity	\leq 0.5 μ m
Cladding Non-Circularity	\leq 0.7%
Coating Diameter	242 \pm 5 μ m
Coating-Cladding Concentricity	$<$ 12 μ m

Environmental Specifications

Environmental Test	Test Condition	Induced Attenuation 1310 nm, 1550 nm & 1625 nm
Temperature Dependence	-60°C to +85°C	\leq 0.05
Temperature Humidity Cycling	-10°C to +85°C up to 98% RH	\leq 0.05

FO Breakoutl cable E2000/E2000 24E9/125 μ OS2 LSHF, Length: xxxx

Water Immersion	23°C \pm 2°C	\leq 0.05
Heat Aging	85°C \pm 2°C	\leq 0.05
Operating Temperature Range	-60°C to +85°C	

Mechanical Specifications

Proof Test	The entire fiber length is subjected to a tensile stress \geq 100 kpsi (0.7 GPa).
Length	Fiber lengths available up to 63.0 km/spool.

Performance Characterizations

Core Diameter	8.2 μ m
Numerical Aperture	0.14
Zero Dispersion Wavelength (λ_0)	1317 nm
Zero Dispersion Slope (S_0)	0.088 ps/(nm ² *km)
Effective Group Index of Refraction	1310 nm: 1.4676 1550 nm: 1.4682
Fatigue Resistance Parameter (nd)	20
Coating Strip Force	Dry: 0.6 lbs (3N) Wet: 14 days room temperature: 0.6 lbs (3N)
Rayleigh Backscatter Coefficient (for 1 ns Pulse Width)	1310 nm: -77 dB 1550 nm: -82 dB

Product variants & accessories

Art.-No.	Description
L-E2/E2-09V04Exxxx	FO Breakoutl cable E2000/E2000 4E9/125 μ OS2 LSHF, Length: xxxx
L-E2/E2-09V08Exxxx	FO Breakoutl cable E2000/E2000 8E9/125 μ OS2 LSHF, Length: xxxx
L-E2/E2-09V12Exxxx	FO Breakoutl cable E2000/E2000 12E9/125 μ OS2 LSHF, Length: xxxx
L-E2/E2-09V24Exxxx	FO Breakoutl cable E2000/E2000 24E9/125 μ OS2 LSHF, Length: xxxx