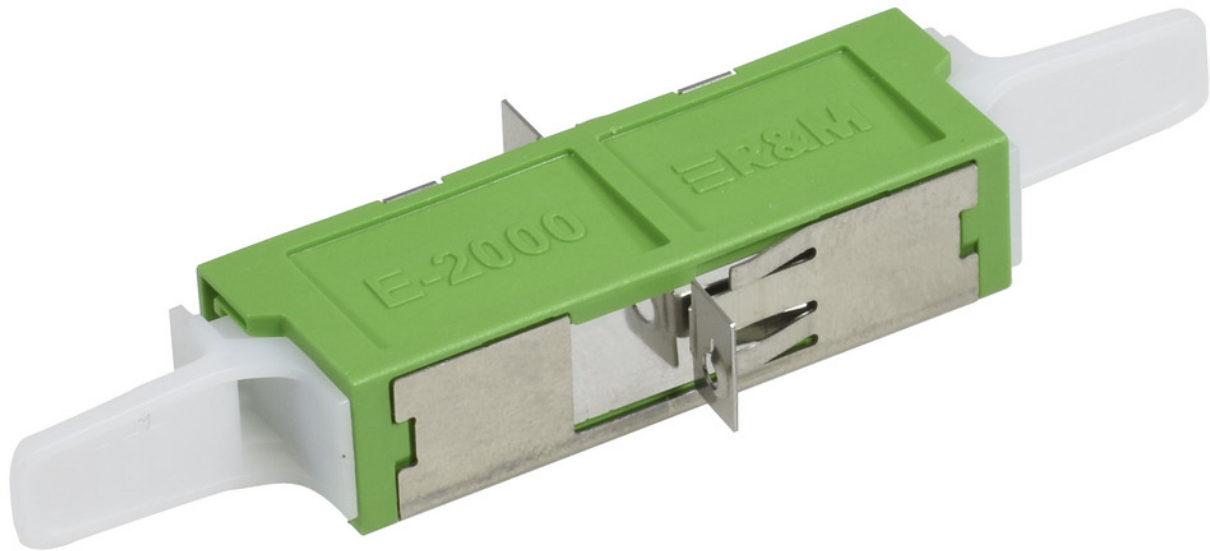


E2000™ APC Simplex Adapter ceramic with flange, green, class C



E2000™ Adapter

Wherever high-end solutions are required, R&M relies on its E-2000™ family of connectors. R&M is one of only three manufacturers worldwide to manufacture this standardized high-performance connector (manufactured under license from Diamond SA, Losone). The optimum transmission properties of this push-pull connector are based on high-precision ceramic ferrules, adapted interfaces for improved insertion and return losses, and APC 8° ferrules for high-return loss requirements. High quality is guaranteed throughout. 100% of the assemblies are tested directly in the process. The self-closing screen not only provides protection against dust and damage, but also protects your maintenance personnel from high-energy laser light. R&M connectors comply with all the relevant European and international standards (CECC 86 275-801, CECC 86 275-802 and IEC 61 754-15).

- Injection-molded PBT housing, UL 94 V-0 (flammability index)
- Integrated, spring-loaded shutters for dust and scratching protection
- Long guiding section of connector body
- Split ceramic sleeve/phosphor bronze sleeve
- 1000 mating cycles (zirconia ceramic alignment sleeve)
- 500 mating cycles (phosphor bronze alignment sleeve)



tde[®] trans data elektronik GmbH

Headquarter address:

Lingener Str. 2
D-49626 Bippen/Ohrte
Tel.: +49 5435 9511 0
Fax.: +49 5435 9511 32

Sales office address:

Prinz-Friedrich-Karl-Str. 46
D-44135 Dortmund
Tel.: +49 231 8805 61 13
Fax.: +49 231 8805 61 15

info@tde.de | www.tde.de

E2000™ APC Simplex Adapter ceramic with flange, green, class C

Scope of supply

- Adapter E2000™
- 2 Philips head screws M2 x 8, blue galvanized
- 2 mounted hexagonal nuts M2, blue galvanized

Technical Data

Standardisation	UL listed
	IEC61754-15
	DIN EN 186270
Connector class	coupling Adapter
Number of connectors (A)	1
Connector type (A)	E2000™
Protection class (IP) connector (A)	IP 20
Polishing connector (A)	APC 8°
Attenuation grade IL - connector (A)	C
Delta insertion loss	≤ 0.2 dB, testing method acc. to IEC 61300-3-4
Mating cycles	min. 1000
Pull-out force	min. 70 N
Connector color (A)	green
Sleeve material	ceramic
Adapter fastening method	end cap
Fiber type	Singlemode (SM)
Dimensions	67.7 / 40 x 22 x 9.35 mm
Material	plastic: PBT, fiber-glass reinforced (halogen-free)
Manufacturer	R&M

Product variants & accessories

Art.-No.	Description
L-R846577	E2000™ APC Simplex Adapter ceramic with flange, green, class C
L-R846580	E2000™ PC Simplex Adapter ceramic with flange, blue/blue, class C