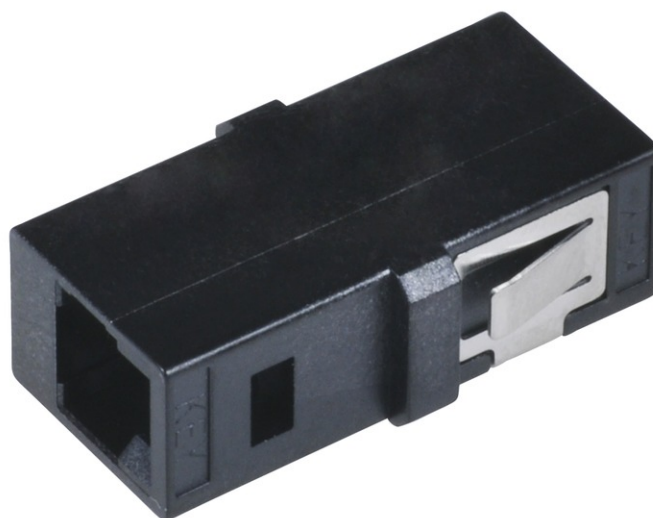


## MT-RJ Adapter without Flange, black



### FO Components

The MT-RJ Adapter standart color: black, upon ruquest also available in other colors.

- SC Simplex Footprint design
- TIA/EIA 568-A Compliant



**tde<sup>®</sup>** trans data elektronik GmbH

**Headquarter address:**

Lingener Str. 2  
D-49626 Bippen/Ohrte  
Tel.: +49 5435 9511 0  
Fax.: +49 5435 9511 32

**Sales office address:**

Prinz-Friedrich-Karl-Str. 46  
D-44135 Dortmund  
Tel.: +49 231 8805 61 13  
Fax.: +49 231 8805 61 15

info@tde.de | www.tde.de

## MT-RJ Adapter without Flange, black

### Technical Data

|              |                       |
|--------------|-----------------------|
| Type         | MT-RJ                 |
| Applikation  | Singlemode, Multimode |
| Design       | without flange        |
| Built form   | SC Simplex            |
| Color        | Black                 |
| Sleeve       | --                    |
| Shutter      | --                    |
| Manufacturer | tde                   |

### Product variants & accessories

| Art.-No.      | Description                         |
|---------------|-------------------------------------|
| L-AD-MT-F-SW  | MT-RJ Adapter with Flange, black    |
| L-AD-MT-NF-SW | MT-RJ Adapter without Flange, black |