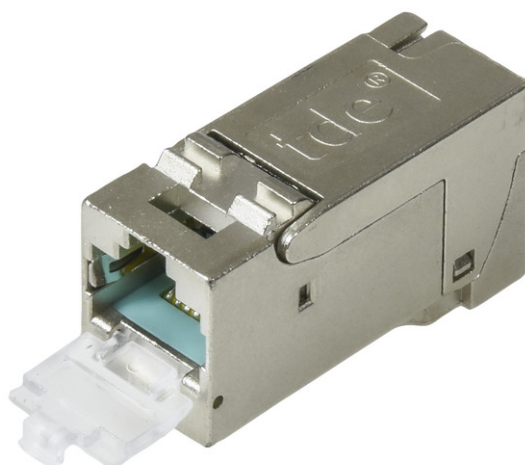


tBL<sup>®</sup> - RJ45 Keystone Module Cat.6<sub>A</sub> ISO/IEC tool-less, AWG 22-24

## tBL<sup>®</sup> - tde Basic Link (TP)

tBL<sup>®</sup> tde Basic Link (TP) is a complete system solution for structured cabling in Cat6A for transfer rates of up to 10GbE in real time. The tBL<sup>®</sup> - cabling link corresponds to a permanent link in accordance with ISO / IEC 11801 (EN 50173). The RJ45 modules are available in the form factors Keystone (KS) and Data Center (DC). The compact design of the 6fold RJ45 DC module allows a high packing density of up to 48 RJ45 ports on 1U. The RJ45 module is connected to the tBL<sup>®</sup> - cable termination block by simply plugging. The slim cable termination block can be easily assembled on the cable by using the tBL<sup>®</sup> - crimp tool and is suitable for preterminated cables. The modular design of individual RJ45 modules are interchangeable at any time without termination. A cost effective alternative product is the RJ45 keystone module without cable termination block in the tool-less design.

The system solution is complemented by an extensive portfolio of carrier systems. These include design-capable data outlets, floor box frames, Consolidation points, DIN rail modules and patch panels in 1/2 and 1U.

**tde<sup>®</sup>** trans data elektronik GmbH**Headquarter address:**

Lingener Str. 2  
D-49626 Bippen/Ohrte  
Tel.: +49 5435 9511 0  
Fax.: +49 5435 9511 32

**Sales office address:**

Prinz-Friedrich-Karl-Str. 46  
D-44135 Dortmund  
Tel.: +49 231 8805 61 13  
Fax.: +49 231 8805 61 15

info@tde.de | www.tde.de

tBL<sup>®</sup> - RJ45 Keystone Module Cat.6<sub>A</sub> ISO/IEC tool-less, AWG 22-24

## Technical Data

### Mechanical properties

Type	RJ45 Jack shielded
Connector standard	IEC 60603-7-51
Installation dimension	19.3 x 14.6 mm
Mating force	≤ 30 N
Mating cycles (RJ45 side)	≥ 750
Mating cycles (opposite side)	≤ 5
Housing material	nickel-plated die-cast zinc
Insulation components material	PC aqua
Gold plating in contact area	50 μ"
Gold plating IDC	min. 3-6 μm (120-240μin) Sn
Contacting	AWG 22-24 Solid-execution
Cable diameter	5-10 mm
EC Directive 2002/95/EC (RoHS)	RoHS conform
	GHMT certified

### Environmental requirements

Connection class	IP20
Temperature range	-40°C to +70°C

### Electrical properties

Contact resistance	≤ 20 mΩ
Insulation resistance between contacts	≥ 500 MΩ
Dielectric withstanding voltage contact – contact	≥ 1000 V DC/AC
Dielectric withstanding voltage contact – screen	≥ 1500 V DC/AC
Current-carrying capacity at 50°C	1.25 A
PoE+ per IEEE 802.3at	PoE+
Transfer Impedance at 1 MHz	≤ 100 mΩ
Transfer Impedance at 10 MHz	≤ 200 mΩ
Transfer Impedance at 80 MHz	≤ 1600 mΩ

### Transmission characteristics

10 GbE	supported
Cat.6 <sub>A</sub>	ISO/IEC 11801 AM1 and Am02, Link length: > 5 m

## Product variants & accessories

## tBL<sup>®</sup> - RJ45 Keystone Module Cat.6<sub>A</sub> ISO/IEC tool-less, AWG 22-24

Art.-No.	Description
TBL-RJ45KS-TL	tBL <sup>®</sup> - RJ45 Keystone Module Cat.6 <sub>A</sub> ISO/IEC tool-less, AWG 22-24