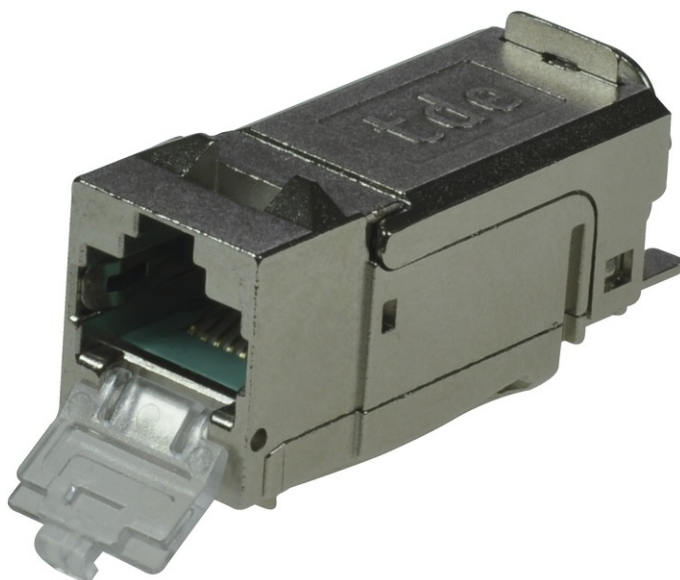


tBL[®] - RJ45 Keystone Module Cat.6_A ISO/IEC incl. termination block AWG 26-27

tBL[®] - tde Basic Link (TP)

tBL[®] tde Basic Link (TP) is a complete system solution for structured cabling in Cat6A for transfer rates of up to 10GbE in real time. The tBL[®] - cabling link corresponds to a permanent link in accordance with ISO / IEC 11801 (EN 50173). The RJ45 modules are available in the form factors Keystone (KS) and Data Center (DC). The compact design of the 6fold RJ45 DC module allows a high packing density of up to 48 RJ45 ports on 1U. The RJ45 module is connected to the tBL[®] - cable termination block by simply plugging. The slim cable termination block can be easily assembled on the cable by using the tBL[®] - crimp tool and is suitable for preterminated cables. The modular design of individual RJ45 modules are interchangeable at any time without termination. A cost effective alternative product is the RJ45 keystone module without cable termination block in the tool-less design.

The system solution is complemented by an extensive portfolio of carrier systems. These include design-capable data outlets, floor box frames, Consolidation points, DIN rail modules and patch panels in 1/2 and 1U.

**tde[®]** trans data elektronik GmbH**Headquarter address:**

Lingener Str. 2
D-49626 Bippen/Ohrte
Tel.: +49 5435 9511 0
Fax.: +49 5435 9511 32

Sales office address:

Prinz-Friedrich-Karl-Str. 46
D-44135 Dortmund
Tel.: +49 231 8805 61 13
Fax.: +49 231 8805 61 15

info@tde.de | www.tde.de

tBL[®] - RJ45 Keystone Module Cat.6_A ISO/IEC incl. termination block AWG 26-27

Technical Data

Mechanical properties

Type	RJ45 Jack shielded
Connector standard	IEC 60603-7-5-1
Installation dimension	19.3 x 14.7 mm
Mating force	≤ 30 N
Mating cycles (RJ45 side)	≥ 750
Mating cycles (opposite side)	≥ 100
Housing material	nickel-plated die-cast zinc
Insulation components material	PC aqua
Gold plating in contact area	50 μ"
Gold plating IDC	30 μ"
Cable diameter	5-10 mm

Environmental requirements

Connection class	IP20
Temperature range	-40°C to +70°C

Electrical properties

Contact resistance	≤ 20 mΩ
Insulation resistance between contacts	≥ 500 MΩ
Dielectric withstanding voltage contact – contact	≥ 1000 V DC/AC
Dielectric withstanding voltage contact – screen	≥ 1500 V DC/AC
Current-carrying capacity at 50°C	1.25 A
PoE+ per IEEE 802.3at	PoE+

Transmission characteristics

10 GbE	supported
Cat.6 _A	ISO/IEC 11801 AM1 and AMD2, Link length: > 1 m

tBL[®] - termination block AWG 26-27, transparent white for stranded cables

Construction	plastic with insulation displacement connection
Gold plating termination block	30 μ"
Color	transparent white
Application	Flex cable AWG 26 - AWG 27, alternative AWG 26 Solid Wire
	Plug bears small flag-like installation guide with color codes for pin-out according to EIA/TIA 568 A and B.

tBL[®] - RJ45 Keystone Module Cat.6_A ISO/IEC incl. termination block AWG 26-27

Product variants & accessories

Art.-No.	Description
TBL-DC/KS-UL-TOOL	tBL [®] - Un Locking tool for opening the RJ45 modules
TBL-KT-CAP	tBL [®] - Pulling Aid for cable termination block
TBL-KT-TOOL	tBL [®] - Crimp tool for crimping the cable termination blocks AWG 22-27
TBL-RJ45KS	tBL [®] - RJ45 Keystone Module Cat.6 _A ISO/IEC w/o termination block
TBL-RJ45KS/KT22	tBL [®] - RJ45 Keystone Module Cat.6 _A ISO/IEC, termination block AWG 22-24
TBL-RJ45KS/KT26	tBL [®] - RJ45 Keystone Module Cat.6 _A ISO/IEC incl. termination block AWG 26-27