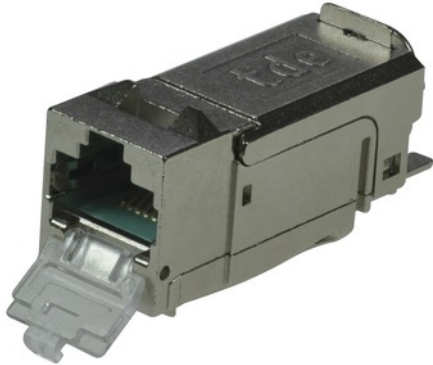


tBL[®] - RJ45 Keystone Module Cat.6_A ISO/IEC with LID, termination block AWG 22-24



tBL[®] - tde Basic Link (TP)

tBL[®] tde Basic Link (TP) is a complete system solution for structured cabling in Cat6A for transfer rates of up to 10GbE in real time. The tBL[®] - cabling link corresponds to a permanent link in accordance with ISO / IEC 11801 (EN 50173). The RJ45 modules are available in the form factors Keystone (KS) and Data Center (DC). The compact design of the 6fold RJ45 DC module allows a high packing density of up to 48 RJ45 ports on 1U. The RJ45 module is connected to the tBL[®] - cable termination block by simply plugging. The slim cable termination block can be easily assembled on the cable by using the tBL[®] - crimp tool and is suitable for preterminated cables. The modular design of individual RJ45 modules are interchangeable at any time without termination. The RJ45 modules are optional with a LID - Light ID function available. This feature facilitates searching of related ports within a cable link. A cost effective alternative product is the RJ45 keystone module without cable termination block in the tool-less design.

The system solution is complemented by an extensive portfolio of carrier systems. These include design-capable data outlets, floor box frames, Consolidation points, DIN rail modules and patch panels in 1/2 and 1U.

The tBL[®] -RJ45 module can be easily snapped onto the cable termination block.



tde[®] trans data elektronik GmbH

Headquarter address:

Lingener Str. 2
D-49626 Buppen/Ohrte
Tel.: +49 5435 9511 0
Fax.: +49 5435 9511 32

Sales office address:

Prinz-Friedrich-Karl-Str. 46
D-44135 Dortmund
Tel.: +49 231 914 36 99
Fax.: +49 231 914 31 29

info@tde.de | www.tde.de

tBL[®] - RJ45 Keystone Module Cat.6_A ISO/IEC with LID, termination block AWG 22-24

Technical Data

Mechanical properties

Type	RJ45 Jack shielded LID
Connector standard	IEC 60603-7-5-1
Installation dimension	19.3 x 14.7 mm
Mating force	≤ 30 N
Mating cycles (RJ45 side)	≥ 750
Mating cycles (opposite side)	≥ 100
Housing material	nickel-plated die-cast zinc
Insulation components material	PC aqua opak
Gold plating in contact area	50 μ"
Gold plating IDC	30 μ"
Cable diameter	5-10 mm

Environmental requirements

Connection class	IP20
Temperature range	-40°C to +70°C

Electrical properties

Contact resistance	≤ 20 mΩ
Insulation resistance between contacts	≥ 500 MΩ
Dielectric withstanding voltage contact – contact	≥ 1000 V DC/AC
Dielectric withstanding voltage contact – screen	--
Current-carrying capacity at 50°C	1.25 A
PoE+ per IEEE 802.3at	PoE+

Transmission characteristics

10 GbE	supported
Cat.6 _A	ISO/IEC 11801 AM1 and AMD2, Link length: > 1 m

LiD Function

supply voltage	12 V DC
lightdetection	≥ 200 m
light exits	≤ 20

tBL[®] - termination block AWG 22-24,transparent yellow for installation cables

tBL[®] - RJ45 Keystone Module Cat.6_A ISO/IEC with LID, termination block AWG 22-24

Construction	plastic with insulation displacement connection
Gold plating termination block	30 μ"
Color	transparent yellow
Application	Installation cable with solid wire, AWG 22 to AWG 24 and flex.
	Plug bears small flag-like installation guide with color codes for pin-out according to EIA/TIA 568 A and B.

Product variants & accessories

Art.-No.	Description
TBL-DC/KS-UL-TOOL	tBL [®] - Un Locking tool for opening the RJ45 modules
TBL-KT-CAP	tBL [®] - Pulling Aid for cable termination block
TBL-KT-TOOL	tBL [®] - Crimp tool for crimping the cable termination blocks AWG 22-27
TBL-LID-TOOL	tBL [®] - Detector for RJ45 modules with LID function
TBL-RJ45KSL	tBL [®] - RJ45 Keystone Module Cat.6 _A ISO/IEC with LID w/o termination block
TBL-RJ45KSL/KT22	tBL [®] - RJ45 Keystone Module Cat.6 _A ISO/IEC with LID, termination block AWG 22-24
TBL-RJ45KSL/KT26	tBL [®] - RJ45 Keystone Module Cat.6 _A ISO/IEC with LID, termination block AWG 26-27