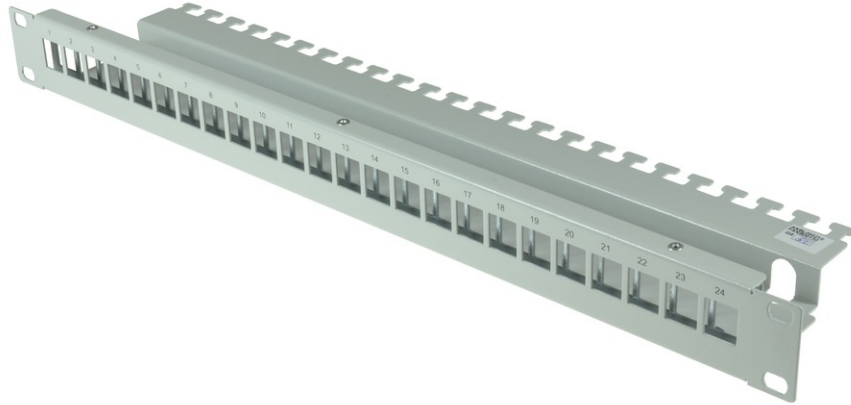


tBL[®] - Patch Panel 19" 1U, for 24x RJ45 Keystone modules, RAL 7035



tBL[®] - tde Basic Link (TP)

tBL[®] tde Basic Link (TP) is a complete system solution for structured cabling in Cat6A for transfer rates of up to 10GbE in real time. The tBL[®] - cabling link corresponds to a permanent link in accordance with ISO / IEC 11801 (EN 50173). The RJ45 modules are available in the form factors Keystone (KS) and Data Center (DC). The compact design of the 6fold RJ45 DC module allows a high packing density of up to 48 RJ45 ports on 1U. The RJ45 module is connected to the tBL[®] - cable termination block by simply plugging. The slim cable termination block can be easily assembled on the cable by using the tBL[®] - crimp tool and is suitable for preterminated cables. The modular design of individual RJ45 modules are interchangeable at any time without termination. The RJ45 modules are optional with a LID - Light ID function available. This feature facilitates searching of related ports within a cable link. A cost effective alternative product is the RJ45 keystone module without cable termination block in the tool-less design.

The system solution is complemented by an extensive portfolio of carrier systems. These include design-capable data outlets, floor box frames, Consolidation points, DIN rail modules and patch panels in 1/2 and 1U.

Distribution panel 19" 1U accepts up to 24 tBL[®] - RJ45 Keystone modules.



tde[®] trans data elektronik GmbH

Headquarter address:

Lingener Str. 2
D-49626 Bippen/Ohrte
Tel.: +49 5435 9511 0
Fax.: +49 5435 9511 32

Sales office address:

Prinz-Friedrich-Karl-Str. 46
D-44135 Dortmund
Tel.: +49 231 914 36 99
Fax.: +49 231 914 31 29

info@tde.de | www.tde.de

tBL[®] - Patch Panel 19" 1U, for 24x RJ45 Keystone modules, RAL 7035

Product not delivered with installation materials or earthing wire.

Technical Data

Standards	IEC 60603-7
Installation dimension	19" 1U depth 155 mm
Front side standard cut-out	24 modules
Back side	cable clamps
Housing material	steel plate, varnished, RAL 7035
Cable fastening	via cable ties
Materials	meet or exceed RoHS 2002/95/EG
Cable diameter	5 - 10 mm
Connection class	IP20
Temperature range	-40°C to +70°C
Applications	Installation in distribution rack
Installation type	distribution rack
tBL [®] - Keystone compatibility	tBL [®] - RJ45 Keystone Module Cat.6A ISO/IEC tool-less, AWG 22-24 (P/N TBL-RJ45KS-TL)
	tBL [®] - RJ45 Keystone Module Cat.6A ISO/IEC for termination blocks (P/N TBL-RJ45KS / TBL-RJ45KS/KT22 / TBL-RJ45KS/KT26)
	tBL [®] - RJ45 Keystone Module Cat.6A ISO/IEC with LID for termination blocks (P/N TBL-RJ45KSL / TBL-RJ45KSL/KT22 / TBL-RJ45KSL/KT26)

Product variants & accessories

Art.-No.	Description
TBL-P24RJ45KS	tBL [®] - Patch Panel 19" 1U 24x RJ45 Cat.6 _A w/o termination block
TBL-P24RJ45KS/KT22	tBL [®] - Patch Panel 19" 1U 24x RJ45 Cat.6 _A , termination block AWG 22-24
TBL-P24RJ45KS/KT26	tBL [®] - Patch Panel 19" 1U 24x RJ45 Cat.6 _A , termination block AWG 26-27
TBL-P24RJ45KS-W/O	tBL [®] - Patch Panel 19" 1U, for 24x RJ45 Keystone modules, RAL 7035
TBL-RJ45KS-TL	tBL [®] - RJ45 Keystone Module Cat.6 _A ISO/IEC tool-less, AWG 22-24