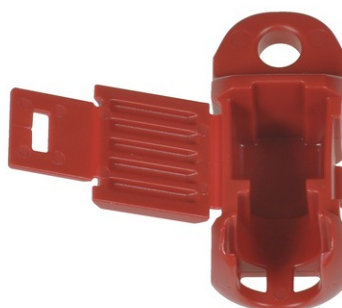


## tBL® - Pulling Aid for cable termination block



### tBL® - tde Basic Link (TP)

tBL® tde Basic Link (TP) is a complete system solution for structured cabling in Cat6A for transfer rates of up to 10GbE in real time. The tBL® - cabling link corresponds to a permanent link in accordance with ISO / IEC 11801 (EN 50173). The RJ45 modules are available in the form factors Keystone (KS) and Data Center (DC). The compact design of the 6fold RJ45 DC module allows a high packing density of up to 48 RJ45 ports on 1U. The RJ45 module is connected to the tBL® - cable termination block by simply plugging. The slim cable termination block can be easily assembled on the cable by using the tBL® - crimp tool and is suitable for preterminated cables. The modular design of individual RJ45 modules are interchangeable at any time without termination. A cost effective alternative product is the RJ45 keystone module without cable termination block in the tool-less design.

The system solution is complemented by an extensive portfolio of carrier systems. These include design-capable data outlets, floor box frames, Consolidation points, DIN rail modules and patch panels in 1/2 and 1U.

Pulling aid protects the (pre)assembled cable termination block when pulled or prior to final assembly in tBL® - Data Center- or Keystone Module.



**tde® trans data elektronik GmbH**

**Headquarter address:**

Lingener Str. 2  
D-49626 Bippen/Ohrte  
Tel.: +49 5435 9511 0  
Fax.: +49 5435 9511 32

**Sales office address:**

Prinz-Friedrich-Karl-Str. 46  
D-44135 Dortmund  
Tel.: +49 231 8805 61 13  
Fax.: +49 231 8805 61 15

info@tde.de | www.tde.de

## tBL<sup>®</sup> - Pulling Aid for cable termination block

### Technical Data

Material	plastic
----------	---------

### Product variants & accessories

Art.-No.	Description
TBL-KT-CAP	tBL <sup>®</sup> - Pulling Aid for cable termination block
TBL-RJ45DCX6/KT22	tBL <sup>®</sup> - RJ45 DC 6fold Module Cat.6 <sub>A</sub> ISO/IEC, termination block AWG 22-24
TBL-RJ45DCX6/KT26	tBL <sup>®</sup> - RJ45 DC 6fold Module Cat.6 <sub>A</sub> ISO/IEC, termination block AWG 26-27
TBL-RJ45KS/KT22	tBL <sup>®</sup> - RJ45 Keystone Module Cat.6 <sub>A</sub> ISO/IEC, termination block AWG 22-24
TBL-RJ45KS/KT26	tBL <sup>®</sup> - RJ45 Keystone Module Cat.6 <sub>A</sub> ISO/IEC incl. termination block AWG 26-27