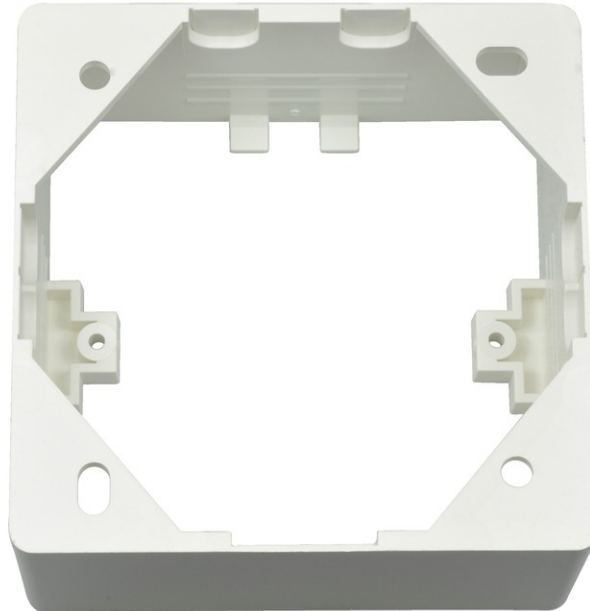


tBL[®] - surface frame empty for wall outlet, 80 x 42 x 80 mm RAL9010



tBL[®] - tde Basic Link (TP)

tBL[®] tde Basic Link (TP) is a complete system solution for structured cabling in Cat6A for transfer rates of up to 10GbE in real time. The tBL[®] - cabling link corresponds to a permanent link in accordance with ISO / IEC 11801 (EN 50173). The RJ45 modules are available in the form factors Keystone (KS) and Data Center (DC). The compact design of the 6fold RJ45 DC module allows a high packing density of up to 48 RJ45 ports on 1U. The RJ45 module is connected to the tBL[®] - cable termination block by simply plugging. The slim cable termination block can be easily assembled on the cable by using the tBL[®] - crimp tool and is suitable for preterminated cables. The modular design of individual RJ45 modules are interchangeable at any time without termination. The RJ45 modules are optional with a LID - Light ID function available. This feature facilitates searching of related ports within a cable link. A cost effective alternative product is the RJ45 keystone module without cable termination block in the tool-less design.

The system solution is complemented by an extensive portfolio of carrier systems. These include design-capable data outlets, floor box frames, Consolidation points, DIN rail modules and patch panels in 1/2 and 1U.

The separate frame is for the surface mounting of the tBL[®] - data outlets.



tde[®] trans data elektronik GmbH

Headquarter address:

Lingener Str. 2
D-49626 Bippen/Ohrte
Tel.: +49 5435 9511 0
Fax.: +49 5435 9511 32

Sales office address:

Prinz-Friedrich-Karl-Str. 46
D-44135 Dortmund
Tel.: +49 231 914 36 99
Fax.: +49 231 914 31 29

info@tde.de | www.tde.de

tBL[®] - surface frame empty for wall outlet, 80 x 42 x 80 mm RAL9010

Technical Data

Material	plastic
Color	white, similar to RAL 9010
Components	80 x 42 x 80mm
Application	surface mounting

Product variants & accessories

Art.-No.	Description
TBL-AP-RW	tBL [®] - surface frame empty for wall outlet, 80 x 42 x 80 mm RAL9010
TBL-UP1RJ45KS-RW	tBL [®] - wall outlet 45° for 1x Keystone Module incl. frame 80x80mm, RAL9010
TBL-UP2RJ45KS-RW	tBL [®] - wall outlet 45° for 2x Keystone Modules incl. frame 80x80mm, RAL9010
TBL-UP3RJ45KS-RW	tBL [®] - wall outlet 45° for 3x Keystone Modules incl. frame 80x80mm, RAL9010