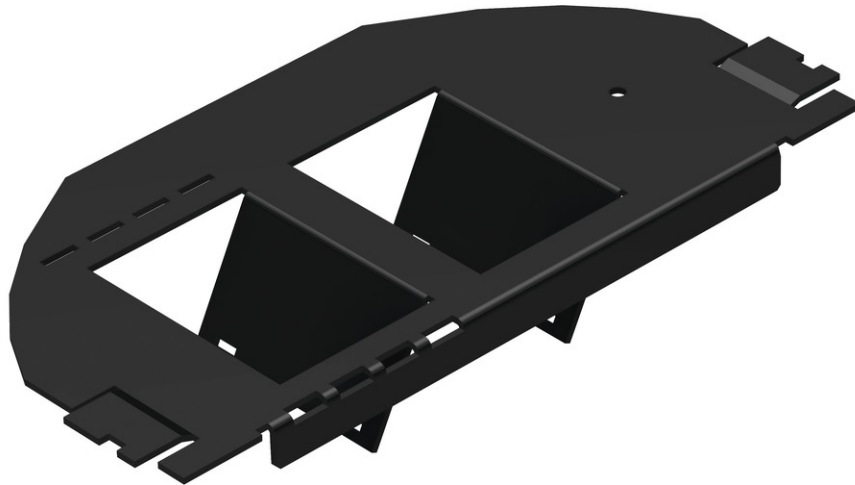


tBL[®] - Floor box frame for Adapter plates for 6x RJ45 Keystone modules for Electraplan GB2 left



tBL[®] - tde Basic Link (TP)

tBL[®] tde Basic Link (TP) is a complete system solution for structured cabling in Cat6A for transfer rates of up to 10GbE in real time. The tBL[®] - cabling link corresponds to a permanent link in accordance with ISO / IEC 11801 (EN 50173). The RJ45 modules are available in the form factors Keystone (KS) and Data Center (DC). The compact design of the 6fold RJ45 DC module allows a high packing density of up to 48 RJ45 ports on 1U. The RJ45 module is connected to the tBL[®] - cable termination block by simply plugging. The slim cable termination block can be easily assembled on the cable by using the tBL[®] - crimp tool and is suitable for preterminated cables. The modular design of individual RJ45 modules are interchangeable at any time without termination. The RJ45 modules are optional with a LID - Light ID function available. This feature facilitates searching of related ports within a cable link. A cost effective alternative product is the RJ45 keystone module without cable termination block in the tool-less design.

The system solution is complemented by an extensive portfolio of carrier systems. These include design-capable data outlets, floor box frames, Consolidation points, DIN rail modules and patch panels in 1/2 and 1U.

tBL[®] - Floor box frame is intended for the integration of up to six Keystone



tde[®] trans data elektronik GmbH

Headquarter address:

Lingener Str. 2
D-49626 Bippen/Ohrte
Tel.: +49 5435 9511 0
Fax.: +49 5435 9511 32

Sales office address:

Prinz-Friedrich-Karl-Str. 46
D-44135 Dortmund
Tel.: +49 231 914 36 99
Fax.: +49 231 914 31 29

info@tde.de | www.tde.de

tBL[®] - Floor box frame for Adapter plates for 6x RJ45 Keystone modules for Electraplan GB2 left

modules into a Electraplan GB2 left Floor Box.

Technical Data

| | |
|-------------|--|
| Mounting | up to two adapter plates (TBL-BO-AD-RJ45KS) for up to 6x RJ45 Keystone modules |
| Material | galvanized steel sheet |
| Colour | black (RAL 9005) |
| Inscription | Label strip self adhesive for free port inscription |
| Grounding | Grounding screw |
| | QS-Managementsystem ISO 9001, ISO 14001 and TL 9000 |

Product variants & accessories

| Art.-No. | Description |
|---------------------|--|
| TBL-BO-AD-RJ45KS | tBL [®] - Adapter plate for 3x RJ45 Keystone modules for floor box frame Electraplan |
| TBL-BO-RJ45KS-GB2-L | tBL [®] - Floor box frame for Adapter plates for 6x RJ45 Keystone modules for Electraplan GB2 left |
| TBL-BO-RJ45KS-GB2-R | tBL [®] - Floor box frame for Adapter plates for 6x RJ45 Keystone modules for Electraplan GB2 right |
| TBL-BO-RJ45KS-GB3 | tBL [®] - Floor box frame for Adapter plates for 9x RJ45 Keystone modules for Electraplan GB3 |
| TBL-RJ45KS | tBL [®] - RJ45 Keystone Module Cat.6 _A ISO/IEC w/o termination block |
| TBL-RJ45KS/KT22 | tBL [®] - RJ45 Keystone Module Cat.6 _A ISO/IEC, termination block AWG 22-24 |
| TBL-RJ45KS/KT26 | tBL [®] - RJ45 Keystone Module Cat.6 _A ISO/IEC incl. termination block AWG 26-27 |
| TBL-RJ45KSL | tBL [®] - RJ45 Keystone Module Cat.6 _A ISO/IEC with LID w/o termination block |
| TBL-RJ45KSL/KT22 | tBL [®] - RJ45 Keystone Module Cat.6 _A ISO/IEC with LID, termination block AWG 22-24 |
| TBL-RJ45KSL/KT26 | tBL [®] - RJ45 Keystone Module Cat.6 _A ISO/IEC with LID, termination block AWG 26-27 |
| TBL-RJ45KS-TL | tBL [®] - RJ45 Keystone Module Cat.6 _A ISO/IEC tool-less, AWG 22-24 |