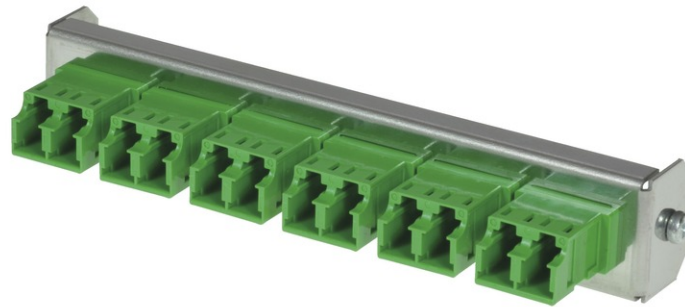


tSML - FO partial front panel Snap-In with 6x LC Duplex OS2 green for tSML Module 0.5U



tSML - tde Semi Modular Link

tSML is a modular developed cabling system, which consists of two core components: module and trunk cable. The system components, preterminated with connectors and tested ex works, facilitate very fast installation of both twisted pair and fiber-optic cables. Ready-made trunk cables, providing a high number of pairs or fibers, can simply be plugged together using patch panels. Up to 96x LC duplex and/or 48 x RJ45 of haven can be accommodated in such a way on 1U. At the heart of the System are MPO/MTP[®] and Telco connectors, with which 12 optical fibers or 24 copper pairs can be connected simultaneously. Fiber-optic and twisted pair modules can be combined on 1U within a panel without difficulty.

The tSML - FO partial front panel is intended for the installation in the tSML Module 0.5U.



tde[®] trans data elektronik GmbH

Headquarter address:

Lingener Str. 2
D-49626 Bippen/Ohrte
Tel.: +49 5435 9511 0
Fax.: +49 5435 9511 32

Sales office address:

Prinz-Friedrich-Karl-Str. 46
D-44135 Dortmund
Tel.: +49 231 914 36 99
Fax.: +49 231 914 31 29

info@tde.de | www.tde.de

tSML - FO partial front panel Snap-In with 6x LC Duplex OS2 green for tSML Module 0.5U

Technical Data

Pre-mounted	6 x LC Duplex adapter (green)
	QS-Managementsystem ISO 9001, ISO 14001 and TL 9000

tML[®] - partial front panels

Front Panel	Stainless steel
Dimensions	108 x 20 mm

FO Adapters

Type	LC Duplex
Application	Singlemode OS2 APC
Design	One-Piece without flange
Connector style	SC Simplex
Color	Green
Material	Plastic
Sleeve	Zirkonia Staight Split
Shutter	--
Manufacturer	tde

Product variants & accessories

Art.-No.	Description
TSML-M06LCD-BL	tSML - FO partial front panel Snap-In with 6x LC Duplex OS2 blue for tSML Module 0.5U
TSML-M06LCD-GN	tSML - FO partial front panel Snap-In with 6x LC Duplex OS2 green for tSML Module 0.5U
TSML-M06LCD-TK	tSML - FO partial front panel Snap-In with 6x LC Duplex OM3 aqua for tSML Module 0.5U
TSML-M06LCD-VI	tSML - FO partial front panel Snap-In with 6x LC Duplex OM4 magenta for tSML Module 0.5U