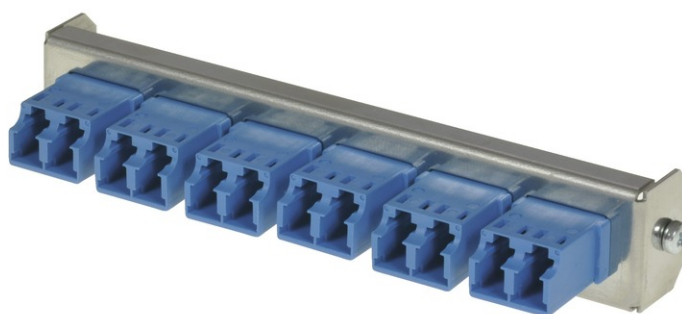


tSML - FO partial front panel Snap-In with 6x LC Duplex OS2 blue for tSML Module 0.5U



## tSML - tde Semi Modular Link

tSML is a modular developed cabling system, which consists of two core components: module and trunk cable. The system components, preterminated with connectors and tested ex works, facilitate very fast installation of both twisted pair and fiber-optic cables. Ready-made trunk cables, providing a high number of pairs or fibers, can simply be plugged together using patch panels. Up to 96x LC duplex and/or 48 x RJ45 of haven can be accommodated in such a way on 1U. At the heart of the System are MPO/MTP<sup>®</sup> and Telco connectors, with which 12 optical fibers or 24 copper pairs can be connected simultaneously. Fiber-optic and twisted pair modules can be combined on 1U within a panel without difficulty.

The tSML - FO partial front panel is intended for the installation in the tSML Module 0.5U.



### **tde<sup>®</sup>** trans data elektronik GmbH

#### **Headquarter address:**

Lingener Str. 2  
D-49626 Bippen/Ohrte  
Tel.: +49 5435 9511 0  
Fax.: +49 5435 9511 32

#### **Sales office address:**

Prinz-Friedrich-Karl-Str. 46  
D-44135 Dortmund  
Tel.: +49 231 8805 61 13  
Fax.: +49 231 8805 61 15

info@tde.de | www.tde.de

## tSML - FO partial front panel Snap-In with 6x LC Duplex OS2 blue for tSML Module 0.5U

### Technical Data

|             |   |
|-------------|---|
| Pre-mounted | 6 x LC Duplex adapter (blue)                        |
|             | QS-Managementsystem ISO 9001, ISO 14001 and TL 9000 |

### tML<sup>®</sup> - partial front panels

|             |                 |
|-------------|-----------------|
| Front Panel | Stainless steel |
| Dimensions  | 108 x 20 mm     |

### FO Adapters

|                 |                          |
|-----------------|--------------------------|
| Type            | LC Duplex                |
| Application     | Singlemode OS2 PC        |
| Design          | One-Piece without flange |
| Connector style | SC simplex               |
| Color           | Blue                     |
| Material        | Plastik                  |
| Sleeve          | Zirkonia Staight Split   |
| Shutter         | --                       |
| Manufacturer    | tde                      |

### Product variants & accessories

| Art.-No.       | Description  |
|----------------|--|
| TSML-M06LCD-BL | tSML - FO partial front panel Snap-In with 6x LC Duplex OS2 blue for tSML Module 0.5U    |
| TSML-M06LCD-GN | tSML - FO partial front panel Snap-In with 6x LC Duplex OS2 green for tSML Module 0.5U   |
| TSML-M06LCD-TK | tSML - FO partial front panel Snap-In with 6x LC Duplex OM3 aqua for tSML Module 0.5U    |
| TSML-M06LCD-VI | tSML - FO partial front panel Snap-In with 6x LC Duplex OM4 magenta for tSML Module 0.5U |