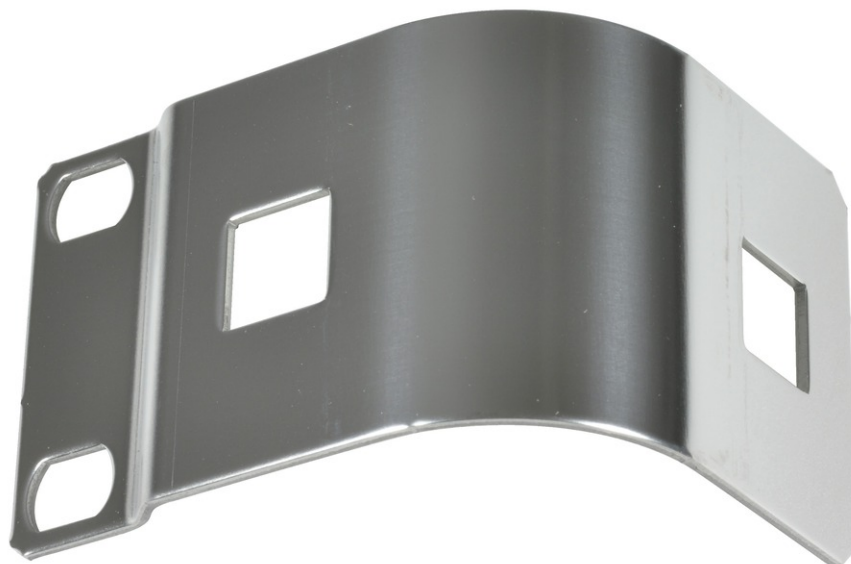


tML[®] - vertical Patch Cord Management 90° angled without rings, stainless steel

tML[®] - tde Modular Link

tML[®] is a patented, modular cabling system consisting of the three key components module, trunk cable and rack mount enclosure. The system components are 100 percent manufactured, pre-assembled and tested in Germany. They enable plug-and-play installation on site – especially in data centres, but also in industrial environments – within the shortest possible time. Heart of the system are the rear MPO/MTP[®] and Telco connectors, which can be used to connect at least six or twelve ports at a time. Depending on the module configuration, transfer rates of up to 200G are currently possible with SR4. The fibre optic and TP modules can be used together in a module carrier with a very high port density. The tde offers its tML[®] cabling system as a proven tML[®] standard system and in the highly innovative variants tML[®] Xtended, tML[®] 24 System and now tML[®] 32 System for extreme scalability and very easy migration to higher transmission rates such as 40G, 100G, 200G and 400G.

**tde[®] trans data elektronik GmbH****Headquarter address:**

Lingener Str. 2
D-49626 Bippen/Ohrte
Tel.: +49 5435 9511 0
Fax.: +49 5435 9511 32

Sales office address:

Prinz-Friedrich-Karl-Str. 46
D-44135 Dortmund
Tel.: +49 231 8805 61 13
Fax.: +49 231 8805 61 15

info@tde.de | www.tde.de

tML[®] - vertical Patch Cord Management 90° angled without rings, stainless steel

Technical Data

Color	stainless steel (V2A-AiSi 430)
Thickness	1.0 mm
Assembly	up to 2 rings
Dimensions	1U, side length outside (incl. mounting): 6.8 cm/ side length behind: 5.0 cm
Mounting	on the 19" rail.
	QS-Managementsystem ISO 9001, ISO 14001 and TL 9000

Product variants & accessories

Art.-No.	Description
TML-RP-BGL-100-K	tML [®] - FO Patch Cord Management ring plastic, 100mm, black
TML-RP-BGL-110	tML [®] - TP Patch Cord Management ring metal, 110mm
TML-RP-BGL-56-K	tML [®] - FO Patch Cord Management ring plastic, 56mm, black
TML-RP-VERT	tML [®] - vertical Patch Cord Management 90° angled without rings, stainless steel