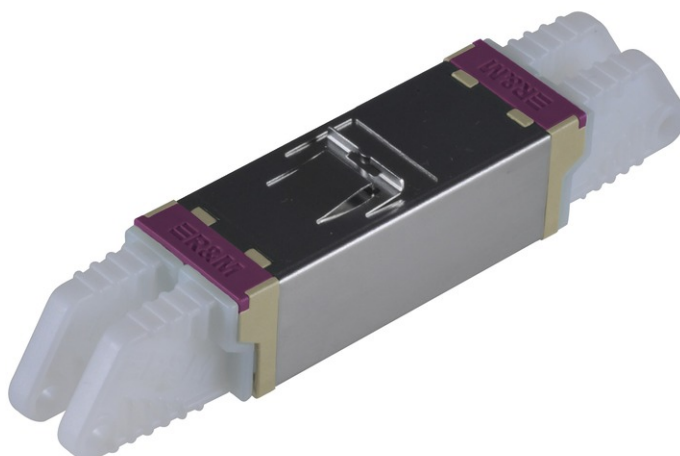


E2000™ Compact Adapter, metal/beige-magenta, Ceramic MM, M, Snap-In



E2000™ Adapter

Wherever high-end solutions are required, R&M relies on its E-2000™ family of connectors. R&M is one of only three manufacturers worldwide to manufacture this standardized high-performance connector (manufactured under license from Diamond SA, Losone). The optimum transmission properties of this push-pull connector are based on high-precision ceramic ferrules, adapted interfaces for improved insertion and return losses, and APC 8° ferrules for high-return loss requirements. High quality is guaranteed throughout. 100% of the assemblies are tested directly in the process. The self-closing screen not only provides protection against dust and damage, but also protects your maintenance personnel from high-energy laser light. R&M connectors comply with all the relevant European and international standards (CECC 86 275-801, CECC 86 275-802 and IEC 61 754-15).

- Injection-molded PBT housing, UL 94 V-0 (flammability index)
- Integrated, spring-loaded shutters for dust and scratching protection
- Long guiding section of connector body
- Split ceramic sleeve/phosphor bronze sleeve
- 1000 mating cycles (zirconia ceramic alignment sleeve)
- 500 mating cycles (phosphor bronze alignment sleeve)



tde[®] trans data elektronik GmbH

Headquarter address:

Lingener Str. 2
D-49626 Bippen/Ohrte
Tel.: +49 5435 9511 0
Fax.: +49 5435 9511 32

Sales office address:

Prinz-Friedrich-Karl-Str. 46
D-44135 Dortmund
Tel.: +49 231 8805 61 13
Fax.: +49 231 8805 61 15

info@tde.de | www.tde.de

E2000™ Compact Adapter, metal/beige-magenta, Ceramic MM, M, Snap-In

E2000™ Compact clutch with semi-transparent dust caps. Quick mounting clip integrated.

Color coding: Clutch / Frame.

Technical Data

Standardisation	acc. to IEC61754-15, DIN EN 186270
Mating cycles	min. 1000
Pull-out force	min. 70 N
Number of connectors (A)	1
Connector type (A)	E2000™ Compact
Protection class (IP) connector (A)	20
Polishing connector (A)	PC
Attenuation grade IL - connector (A)	≤ 0.2 dB, testing method acc. to IEC 61300-3-4
Connector color (A)	beige
Lever- frame-coding connector (A)	color
Frame color connector (A)	magenta-magenta
Sleeve material	Zirkonia Straight Split
Adapter fastening method	flange snap
Holder for connector / module	Snap-In frame
Fiber type	Multimode (MM)
Dimensions	74.7 / 42 x 14.7 x 13 / 15.4 mm
Material	steel: X10CrNi18-8 (1.4310) / plastic: PBT, fiber-glass reinforced (halogen-free)
Manufacturer	R&M

Product variants & accessories

Art.-No.	Description
L-AD-E2ACM-NF-GN/GN	FO Adapter E2000™ Compact APC Adapter, metal/green-green, Ceramic SM, C, Snap-In
L-AD-E2CM-NF-BG/OR	E2000™ Compact Adapter, metal/beige-orange, Ceramic MM, M, Snap-In
L-AD-E2CM-NF-BG/TK	E2000™ Compact Adapter, metal/beige-aqua, Ceramic MM, M, Snap-In
L-AD-E2CM-NF-BG/VI	E2000™ Compact Adapter, metal/beige-magenta, Ceramic MM, M, Snap-In
L-AD-E2CM-NF-BL/BL	E2000™ Compact Adapter, metal/blue-blue, Ceramic SM, C, Snap-In