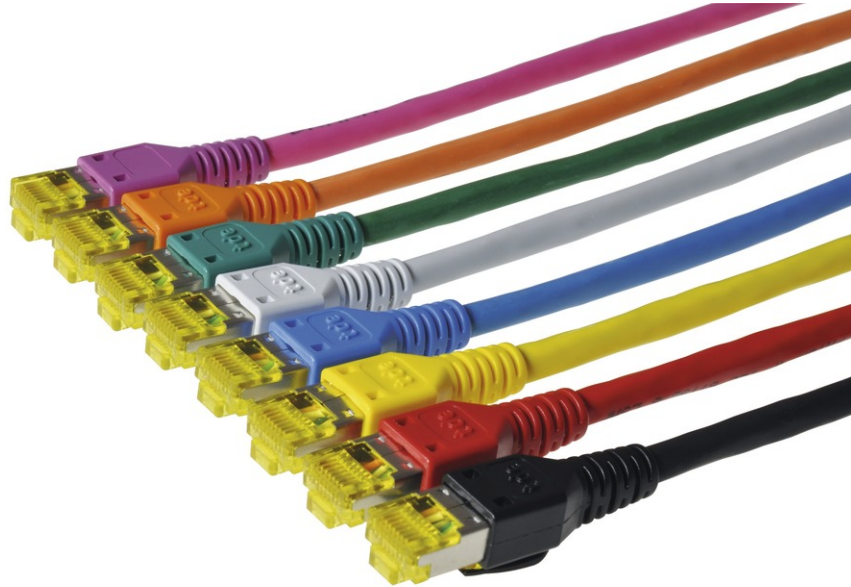


S/FTP Patch cord RJ45/RJ45 TM31 red, UC900 SS27 FRNC Cat6<sub>A</sub> red, Length: xxxx



## tML<sup>®</sup> - tde Modular Link

tML<sup>®</sup> is a patented, modular cabling system consisting of the three key components module, trunk cable and rack mount enclosure. The system components are 100 percent manufactured, pre-assembled and tested in Germany. They enable plug-and-play installation on site – especially in data centres, but also in industrial environments – within the shortest possible time. Heart of the system are the rear MPO/MTP<sup>®</sup> and Telco connectors, which can be used to connect at least six or twelve ports at a time. Depending on the module configuration, transfer rates of up to 200G are currently possible with SR4. The fibre optic and TP modules can be used together in a module carrier with a very high port density. The tde offers its tML<sup>®</sup> cabling system as a proven tML<sup>®</sup> standard system and in the highly innovative variants tML<sup>®</sup> Xtended, tML<sup>®</sup> 24 System and now tML<sup>®</sup> 32 System for extreme scalability and very easy migration to higher transmission rates such as 40G, 100G, 200G and 400G.

RJ45 Patch cord for the employment in the distribution frame or for the connection of terminals.



**tde<sup>®</sup> trans data elektronik GmbH**

**Headquarter address:**

Lingener Str. 2  
D-49626 Bippen/Ohrte  
Tel.: +49 5435 9511 0  
Fax.: +49 5435 9511 32

**Sales office address:**

Prinz-Friedrich-Karl-Str. 46  
D-44135 Dortmund  
Tel.: +49 231 914 36 99  
Fax.: +49 231 914 31 29

info@tde.de | www.tde.de

S/FTP Patch cord RJ45/RJ45 TM31 red, UC900 SS27 FRNC Cat6<sub>A</sub> red, Length: xxxx

## Technical Data

Cabletype	Draka UC900 SS27 Cat.7
Configuration	1:1
Tests	Link Performance Tests, electrical test on short-circuit and visual final inspection
	QS-Managementsystem ISO 9001, ISO 14001 and TL 9000

xxxx = Length in cm

## Connectors

Type	RJ45 (TM31), with integreted dwell lever protection
Shielding	shielded
Dimensions Boot	34 mm length 13.4 mm width
Manufacturer	Hirose (connector) tde (boot)
QS-Management Systems Certification	ISO 9001 ISO 14001 TL 9000

## TP Cable

Standards	EN 50173-1 EN 50288-4-2 ISO/IEC 11801 IEC 61156-6
Flame resistance LSHF (FRNC)	IEC 60332-1 IEC 60754-2 IEC 61034
Reaction to fire (Euroclasses)	E <sub>ca</sub>

## Construction

Type	UC900 SS27 Cat.7 S/FTP
Conductor	stranded bare copper wire Ø 0.42 mm (AWG 27/7)
Insulation	Foam Skin Polyethylene, Ø 0.98 mm
Twisting	2 cores to the pair
Pair screen	Al-laminated plastic foil
Cable lay up	4 pairs (PiMF) to the core
Screen	Copper braid, tinned
Sheath	LSHF

S/FTP Patch cord RJ45/RJ45 TM31 red, UC900 SS27 FRNC Cat6<sub>A</sub> red, Length: xxxx

## Mechanical properties

Minimum bending radius	Without load	≥ 25 mm
	With load	≥ 50 mm
Temperature range	During operation	-20°C up to +60°C
	During installation	0°C up to +50°C

## Electrical properties at 20°C ± 5°C

Loop resistance		≤ 340 Ω/km
Resistance unbalance		≤ 3%
Insulation resistance	500 V	≥ 2000 MΩkm
Mutual capacitance	at 800 Hz	Nom. 43 nF/km
Capacitance unbalance	(pair/ground)	≤ 1500 pF/km
Mean characteristic impedance	100 MHz	100 ± 5 Ω
Nominal velocity of propagation		ca. 79%
Propagation delay		≤ 427 ns/100m
Delay skew		≤ 12 ns/100m
Test voltage	(DC, 1 min) core/core and core/screen	1000 V
Transfer impedance	at 1 MHz	10 mΩ/m
	at 10 MHz	10 mΩ/m
	at 30 MHz	30 mΩ/m
Coupling attenuation		85 dB

## Electrical Data (nominal) acc. to Cat.7 (at 20°C)

F	Attenuation	NEXT	PS-NEXT	ACR	ELFEXT	PS-ELFEXT	Return loss
MHZ	dB/10m	dB	dB	dB/100m	dB/100m	dB/100m	dB
1,0	0,3	90	87	90	80	77	23
4,0	0,6	90	87	89	80	77	24
10,0	1,0	90	87	89	80	77	25
16,0	1,3	90	87	89	76	73	25
20,0	1,4	90	87	89	74	71	25
31,2	1,8	90	87	88	70	67	25
62,5	2,6	90	87	87	64	61	23
100,0	3,2	87	84	84	60	57	21
125,0	3,6	85	82	81	58	55	20
155,5	4,0	84	81	80	56	53	19
175,0	4,3	83	80	79	55	52	19
200,0	4,6	82	79	77	54	51	18
250,0	5,1	81	78	76	52	49	18
300,0	5,6	80	77	74	50	47	17
450,0	6,9	77	74	70	47	44	17
600,0	7,9	75	72	67	44	41	17
750,0	8,7	73	70	64	42	39	
900,0	9,7	72	69	62	41	38	

S/FTP Patch cord RJ45/RJ45 TM31 red, UC900 SS27 FRNC Cat6<sub>A</sub> red, Length: xxxx

1000,0      10,2      71      68      61      40      37

Outer diameter	5.9 mm
Fire load	349 MJ/km
	0.097 kWh/m
Weight	39 kg/km
Copper content	24
Tensile force	100 N

## Product variants & accessories

Art.-No.	Description
TML-H6AZBL-NBLxxxx	S/FTP Patch cord RJ45/RJ45 TM31 blue, UC900 SS27 FRNC Cat6 <sub>A</sub> blue, Length: xxxx
TML-H6AZGE-NGExxxx	S/FTP Patch cord RJ45/RJ45 TM31 yellow, UC900 SS27 FRNC Cat6 <sub>A</sub> yellow, Length: xxxx
TML-H6AZGN-NGNxxxx	S/FTP Patch cord RJ45/RJ45 TM31 green, UC900 SS27 FRNC Cat6 <sub>A</sub> green, Length: xxxx
TML-H6AZGR-NGRxxxx	S/FTP Patch cord RJ45/RJ45 TM31 grey, UC900 SS27 FRNC Cat6 <sub>A</sub> grey, Length: xxxx
TML-H6AZRT-NRTxxxx	S/FTP Patch cord RJ45/RJ45 TM31 red, UC900 SS27 FRNC Cat6 <sub>A</sub> red, Length: xxxx
TML-H6AZSW-NSWxxxx	S/FTP Patch cord RJ45/RJ45 TM31 black, UC900 SS27 FRNC Cat6 <sub>A</sub> black, Length: xxxx