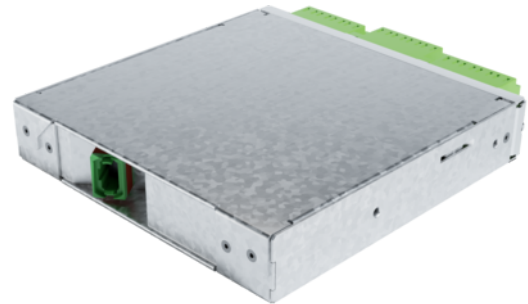


tML<sup>®</sup> 24 - FO Module 1x 24F MPO/MTP<sup>®</sup> without Pins/12x LC APC Duplex 9/125 $\mu$  OS2



## tML<sup>®</sup> tde Modular Link

tML<sup>®</sup> is a patented, modular cabling system consisting of the three key components module, trunk cable and rack mount enclosure. The system components are 100 percent manufactured, pre-assembled and tested in Germany. They enable plug-and-play installation on site – especially in data centres, but also in industrial environments – within the shortest possible time. Heart of the system are the rear MPO/MTP<sup>®</sup> and Telco connectors, which can be used to connect at least six or twelve ports at a time. Depending on the module configuration, transfer rates of up to 400G are currently possible with SR4. The fibre optic and TP modules can be used together in a module carrier with a very high port density. The tde offers its tML<sup>®</sup> cabling system as a proven tML<sup>®</sup> standard system and in the highly innovative variants tML<sup>®</sup> 12, tML<sup>®</sup> 24, tML<sup>®</sup> 32 and now tML<sup>®</sup> 24+ System for extreme scalability and very easy migration to higher transmission rates such as 40G, 100G, 200G, 400G and 800G and more.

The tML<sup>®</sup> 24 - FO Module MPO/MTP<sup>®</sup> is intended for the installation in the tML<sup>®</sup> Rack Mount Enclosure 1U (for 8 x Modules). The tML<sup>®</sup> 24 module can be used only in combination with the tML<sup>®</sup> HD patch cord.



**tde<sup>®</sup> trans data elektronik GmbH**

**Headquarter address:**

Lingener Str. 2  
D-49626 Bippen/Ohrte  
Tel.: +49 5435 9511 0  
Fax.: +49 5435 9511 32

**Sales office address:**

Prinz-Friedrich-Karl-Str. 46  
D-44135 Dortmund  
Tel.: +49 231 8805 61 13  
Fax.: +49 231 8805 61 15

info@tde.de | www.tde.de

tML<sup>®</sup> 24 - FO Module 1x 24F MPO/MTP<sup>®</sup> without Pins/12x LC APC Duplex 9/125 $\mu$  OS2

## Technical Data

The end faces of the connectors are optimized by means of Lasercleaving and machine polish. The MPO/MTP<sup>®</sup>plug has a defined fiber height of 1 - 3.5 $\mu$ . The max. adjacent fiber height difference is 0.2 $\mu$ m and for all fibers 0.3 $\mu$ m. All system components (modules, trunk cables and patch cords) are co-ordinated for the reaching of the performance particularly. The module is marked with sequential serial number and article number. The modules are ROHS compliant.

Entry	1 x MPO/MTP <sup>®</sup> Female Adapter (red) back
Exit	6 x LC APC Quad Adapter (green) front
Tests	Interferometer, Insertion Loss, Return Loss and Visual Final Inspection; all measured values are electronically archived
	QS-Managementsystem ISO 9001, ISO 14001 and TL 9000

Box	Galvanized steel sheet
Front Panel	Stainless steel
Dimensions	110 x 108 x 20 mm

## FO Adapters

Type	MPO/MTP <sup>®</sup>
Application	Singlemode / Multimode
Design	without Flange
Connector style	SC Simplex
Key Orientation	Type A, Key up/down
Color	Red
Material	Plastic
Sleeve	--
Shutter	--
Standards	IEC 61754-7 TIA 604-5
Manufacturer	US Conec

## FO Adapters

Type	LC Quad
Application	Singlemode OS2 APC
Design	with flange
Footprint	SC Duplex
Color	Green
Material	Plastic
Sleeve	Zirconia Straight Split
Shutter	--
Manufacturer	tde

## tML<sup>®</sup> 24 - FO Module 1x 24F MPO/MTP<sup>®</sup> without Pins/12x LC APC Duplex 9/125 $\mu$ OS2

### FO Connectors

The end faces of the connectors are optimized by means of Lasercleaving and machine polish. The MPO/MTP<sup>®</sup> plug has a defined fiber height of 1 - 3.5 $\mu$ m. The max. adjacent fiber height difference is 0.2 $\mu$ m and for all fibers 0.3 $\mu$ m.

#### Connector

Type	MPO/MTP <sup>®</sup> Female Push Pull Locking (green)
Ferrule	24 Fiber SM Elite <sup>®</sup> ferrule, PPS
Boot colour	Red
Temperature range	-40°C to +75°C
Manufacturer	tde/US Conec

#### Optical Performance

Fiber	Type	Wavelength	Insertion loss typ.	Insertion loss max.	Return loss min.
9/125 $\mu$ OS2	MPO/MTP <sup>®</sup> APC	1550 nm	≤ 0.10 dB	0.25 dB	75 dB

### FO Connectors

Connector Type	LC APC Unibody Simplex
Housing	Plastic, Green
Ferrule	Zirconia Straight Split, Spring-loaded Axially
Ferrule Hole	125.5 $\mu$
Ferrule Concentricity	≤ 0.6 $\mu$
Mating Cycles	500
Operating Temperature	-40°C up to +75°C
Strain Relief to	100 N
Manufacturer	tde

#### Optical performance

Fiber	Type	Wavelength	Insertion loss typ.	Insertion loss max.	Return loss min.
9/125 $\mu$	LC APC	1310 / 1550 nm	≤ 0.10 dB	0.18 dB	75 dB

### FO Fiber

Type	Corning SMF-28e+ <sup>®</sup> 09/125 $\mu$ OS2 G.652.D singlemode fiber
Maximum Attenuation	At 1310 nm max. 0.33 - 0.35 dB/km At 1383 ± 3 nm max. 0.31 - 0.35 dB/km At 1490 nm max. 0.21 - 0.24 dB/km At 1550 nm max. 0.19 - 0.20 dB/km At 1625 nm max. 0.20 - 0.23 dB/km
Attenuation vs. Wavelength	Range: 1285 - 1330 nm; Ref. $\lambda$ : 1310 nm; Max. Difference: 0.03 dB/km Range: 1525 - 1575 nm; Ref. $\lambda$ : 1550 nm; Max. Difference: 0.02 dB/km

## tML<sup>®</sup> 24 - FO Module 1x 24F MPO/MTP<sup>®</sup> without Pins/12x LC APC Duplex 9/125 $\mu$ OS2

Macrobend Loss	Mandrel Diameter:32mm; Number of Turns: 1; Wavelength: 1550nm; Induced Attenuation: $\leq 0.03$ dB Mandrel Diameter:50mm; Number of Turns: 100; Wavelength: 1310nm; Induced Attenuation: $\leq 0.03$ dB Mandrel Diameter:50mm; Number of Turns: 100; Wavelength: 1550nm; Induced Attenuation: $\leq 0.03$ dB Mandrel Diameter:60mm; Number of Turns: 100; Wavelength: 1625nm; Induced Attenuation: $\leq 0.03$ dB
Point Discontinuity	Wavelength: 1310 nm; Point Discontinuity: $\leq 0.05$ dB Wavelength: 1550 nm; Point Discontinuity: $\leq 0.05$ dB
Cable Cutoff Wavelength ( $\lambda_{ccf}$ )	$\lambda_{ccf} \leq 1260$ nm
Mode-Field Diameter	At 1310 nm = $9.2 \pm 0.4$ $\mu$ m At 1550 nm = $10.4 \pm 0.5$ $\mu$ m
Dispersion	At 1550 nm = $\leq 18.0$ [ps/(nm*km)] At 1625 nm = $\leq 22.0$ [ps/(nm*km)]
	Zero Dispersion Wavelength ( $\lambda_0$ ): 1310 nm $\leq \lambda_0 \leq 1324$ nm Zero Dispersion Slope ( $S_0$ ): $\leq 0.092$ ps/(nm <sup>2</sup> *km)
Polarization Mode Dispersion (PMD)	PMD Link Design Value = $\leq 0.06$ ps/ $\sqrt$ km Maximum Individual Fiber = $\leq 0.1$ ps/ $\sqrt$ km
Norm	ITU-T Recommendation G.652 (Tables A, B, C, and D) IEC Specifications 60793-2-50 Type B1.3 TIA/EIA 492-CAAB Telcordia Generic Requirements GR-20-CORE ISO 11801 OS2

### Dimensional Specifications

Fiber Curl	$\geq 4.0$ m radius of curvature
Cladding Diameter	$125.0 \pm 0.7$ $\mu$ m
Core-Clad Concentricity	$\leq 0.5$ $\mu$ m
Cladding Non-Circularity	$\leq 0.7\%$
Coating Diameter	$242 \pm 5$ $\mu$ m
Coating-Cladding Concentricity	$< 12$ $\mu$ m

### Environmental Specifications

Environmental Test	Test Condition	Induced Attenuation 1310 nm, 1550 nm & 1625 nm
Temperature Dependence	-60°C to +85°C	$\leq 0.05$
Temperature Humidity Cycling	-10°C to +85°C up to 98% RH	$\leq 0.05$
Water Immersion	23°C $\pm$ 2°C	$\leq 0.05$
Heat Aging	85°C $\pm$ 2°C	$\leq 0.05$
Operating Temperature Range	-60°C to +85°C	

### Mechanical Specifications

Proof Test	The entire fiber length is subjected to a tensile stress $\geq 100$ kpsi (0.7 GPa).
Length	Fiber lengths available up to 63.0 km/spool.

### Performance Characterizations

Core Diameter	8.2 $\mu$ m
Numerical Aperture	0.14

## tML<sup>®</sup> 24 - FO Module 1x 24F MPO/MTP<sup>®</sup> without Pins/12x LC APC Duplex 9/125 $\mu$ OS2

Zero Dispersion Wavelength ( $\lambda_0$ )	1317 nm
Zero Dispersion Slope ( $S_0$ )	0.088 ps/(nm <sup>2</sup> *km)
Effective Group Index of Refraction	1310 nm: 1.4676 1550 nm: 1.4682
Fatigue Resistance Parameter (nd)	20
Coating Strip Force	Dry: 0.6 lbs (3N) Wet: 14 days room temperature: 0.6 lbs (3N)
Rayleigh Backscatter Coefficient (for 1 ns Pulse Width)	1310 nm: -77 dB 1550 nm: -82 dB

## Product variants & accessories

Art.-No.	Description
TML-M12LCADK/M2-09E	tML <sup>®</sup> 24 - FO Module 1x 24F MPO/MTP <sup>®</sup> without Pins/12x LC APC Duplex 9/125 $\mu$ OS2
TML-M12LCDK/M2-09E	tML <sup>®</sup> 24 - FO Module 1x 24F MPO/MTP <sup>®</sup> without Pins/12x LC Duplex 9/125 $\mu$ OS2
TML-M12LCDK/M2-50G3	tML <sup>®</sup> 24 - FO Module 1x 24F MPO/MTP <sup>®</sup> without Pins/12x LC Duplex 50/125 $\mu$ OM3
TML-M12LCDK/M2-50G4	tML <sup>®</sup> 24 - FO Module 1x 24F MPO/MTP <sup>®</sup> without Pins/12x LC Duplex 50/125 $\mu$ OM4
TML-M12LCDS/M2-50G5	tML <sup>®</sup> 24 - FO Module 1x 24F MPO/MTP <sup>®</sup> without Pins/12x LC Duplex w. shutter 50/125 $\mu$ OM5