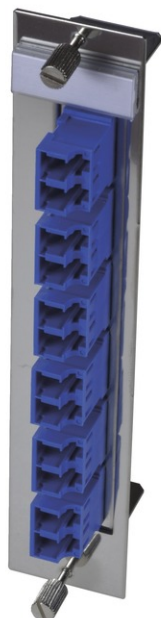


tML[®] - partial front panel with 6x LC Duplex OS2 blue for Rack Mount Enclosure 3U black



tML[®] Xtended

tML[®] Xtended is a patented, modular cabling system consisting of the three key components module, trunk cable and rack mount enclosure. The system components are 100 percent manufactured, pre-assembled and tested in Germany. They enable plug-and-play installation on site – especially in data centres, but also in industrial environments – within the shortest possible time. Heart of the system are the rear MPO/MTP[®] 12 fiber and Telco connectors, which can be used to connect at least six or twelve ports at a time. Depending on the module configuration, transfer rates of up to 200G are currently possible with SR4. The fibre optic and TP modules can be used together in a module carrier with a very high port density. The tde offers its tML[®] cabling system as a proven tML[®] standard system and in the highly innovative variants tML[®] 24 system and now tML[®] 32 system for extreme scalability and very easy migration to higher transmission rates such as 40G, 100G, 200G and 400G.

The tML[®] - FO partial front panel is intended for the installation in the tML[®] Rack Mount Enclosure 3U (for 17 x Modules).



tde[®] trans data elektronik GmbH

Headquarter address:

Lingener Str. 2
D-49626 Bippen/Ohrte
Tel.: +49 5435 9511 0
Fax.: +49 5435 9511 32

Sales office address:

Prinz-Friedrich-Karl-Str. 46
D-44135 Dortmund
Tel.: +49 231 8805 61 13
Fax.: +49 231 8805 61 15

info@tde.de | www.tde.de

tML® - partial front panel with 6x LC Duplex OS2 blue for Rack Mount Enclosure 3U black

Technical Data

Pre-mounted	6 x LC Duplex adapter (blue)
	QS-Managementsystem ISO 9001, ISO 14001 and TL 9000

tML® - partial front panels 5HP

Front Panel	Black
-------------	-------

FO Adapters

Type	LC Duplex
Application	Singlemode OS2 PC
Design	One-Piece without flange
Connector style	SC simplex
Color	Blue
Material	Plastik
Sleeve	Zirkonia Staight Split
Shutter	--
Manufacturer	tde

Product variants & accessories

Art.-No.	Description
TML-T06LCDKH-BGS	tML® - partial front panel with 6x LC Duplex OM2 beige for Rack Mount Enclosure 3U black
TML-T06LCDKH-BLS	tML® - partial front panel with 6x LC Duplex OS2 blue for Rack Mount Enclosure 3U black
TML-T06LCDKH-GNS	tML® - partial front panel with 6x LC APC Duplex OS2 green for Rack Mount Enclosure 3U black
TML-T06LCDKH-TKS	tML® - partial front panel with 6x LC Duplex OM3 aqua for Rack Mount Enclosure 3U black
TML-T06LCDKH-VIS	tML® - partial front panel with 6x LC Duplex OM4 magenta for Rack Mount Enclosure 3U black