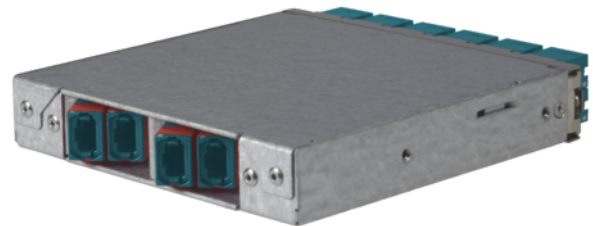


tML[®] 24- FO Dark Fiber Module 4x 24F MPO without Pins/12x 12F MPO with Pins 50/125 μ OM3, SR4



tML[®] - tde Modular Link

tML[®] is a patented, modular cabling system consisting of the three key components module, trunk cable and rack mount enclosure. The system components are 100 percent manufactured, pre-assembled and tested in Germany. They enable plug-and-play installation on site - especially in data centres, but also in industrial environments - within the shortest possible time. The system is characterized by highest packing density and highest flexibility during migration to higher transmission rates. Fibre optic and TP modules can be combined in one rack mount enclosure. 96x fibre optics LC Duplex or 96x MPO connectors can be used modularly on a 19-inch height unit. Thanks to its patented polarity and dark fibre modules, the tML system offers the simplest migration options to 100G and more.

The tML[®] - FO Dark Fiber Module MPO/MTP[®] uses all the fibers of the back room cabling and is intended for the installation in the tML[®] Rack Mount Enclosure 1U (for 8 x Modules).



tde[®] trans data elektronik GmbH

Headquarter address:

Lingener Str. 2
D-49626 Bippen/Ohrte
Tel.: +49 5435 9511 0
Fax.: +49 5435 9511 32

Sales office address:

Prinz-Friedrich-Karl-Str. 46
D-44135 Dortmund
Tel.: +49 231 914 36 99
Fax.: +49 231 914 31 29

info@tde.de | www.tde.de

tML[®] 24- FO Dark Fiber Module 4x 24F MPO without Pins/12x 12F MPO with Pins 50/125 μ OM3, SR4

Technical Data

The end faces of the connectors are optimized by means of Lasercleaving and machine polish. The MPO/MTP[®]plug has a defined fiber height of 1 - 3.5 μ . The max. adjacent fiber height difference is 0.2 μ m and for all fibers 0.3 μ m. All system components (modules, trunk cables and patch cords) are co-ordinated for the reaching of the performance particularly. The module is marked with sequential serial number and article number. The modules are ROHS compliant.

Entry	4 x MPO/MTP [®] (24 Fibers) Female Adapter (red) back
Exit	12 x MPO/MTP [®] (12 Fibers) Male Adapter (aqua) front
Tests	Interferometer, Insertion Loss, Return Loss and Visual Final Inspection; all measured values are electronically archived
	QS-Managementsystem ISO 9001, ISO 14001 and TL 9000

Box	Galvanized steel sheet
Front Panel	Stainless steel
Dimensions	110 x 108 x 20 mm

FO Adapters

Type	MPO/MTP [®]
Application	Singlemode / Multimode
Design	without Flange
Connector style	SC Simplex
Key Orientation	Type A, Key up/down
Color	Red
Material	Plastic
Sleeve	--
Shutter	--
Standards	IEC 61754-7 TIA 604-5
Manufacturer	US Conec

FO Adapters

Type	MPO/MTP [®]
Application	Multimode OM3
Design	without Flange
Connector style	SC Simplex
Key Orientation	Type A, Key up/down
Color	Aqua
Material	Plastic
Sleeve	--
Shutter	--

tML[®] 24- FO Dark Fiber Module 4x 24F MPO without Pins/12x 12F MPO with Pins 50/125 μ OM3, SR4

Standards	IEC 61754-7 TIA 604-5
Manufacturer	US Conec

FO Connectors

The end faces of the connectors are optimized by means of Lasercleaving and machine polish. The MPO/MTP[®] plug has a defined fiber height of 1 - 3.5 μ m. The max. adjacent fiber height difference is 0.2 μ m and for all fibers 0.3 μ m.

Connector

Type	MPO/MTP [®] Female Push Pull Locking (aqua)
Ferrule	24 Fiber MM Elite [®] ferrule, PPS
Boot colour	Red
Temperature range	-40°C to +75°C
Manufacturer	tde/US Conec

Optical Performance

Fiber	Type	Wavelength	Insertion loss typ.	Insertion loss max.	Return loss min.
50/125 μ OM3	MPO/MTP [®]	850 nm	\leq 0.20 dB	0.35 dB	25 dB

FO Connectors

Connector

Type	MPO/MTP [®] Male Push Pull Locking (aqua)
Ferrule	12 Fiber MM Elite [®] ferrule, PPS
Boot colour	Black
Manufacturer	tde/US Conec

Optical Performance

Fiber	Type	Wavelength	Insertion loss typ.	Insertion loss max.	Return loss min.
50/125 μ OM3	MPO/MTP [®]	850 nm	\leq 0.14 dB	0.25 dB	35 dB

FO Fiber

Type	Corning ClearCurve [®] 50/125 μ OM3 multimode fiber
Optimized Data Rate over Distance	40/100 Gb/s über 140 m* 10 Gb/s over 300 m 1 Gb/s over 1000 m
Standard Compliance	ISO/IEC 11801: type OM3 fiber IEC 60793-2-10: type A1a.2 fiber TIA/EIA: 492AAAC-B ITU: ITU G651.1

tML[®] 24- FO Dark Fiber Module 4x 24F MPO without Pins/12x 12F MPO with Pins 50/125 μ OM3, SR4

*	Distances specified in the 40G/100G per IEEE 802.3ba standard are 150m on OM4 and 100m on OM3; Corning fibers are manufactured to tighter dispersion specifications and thereby support the extended distances shown in the table (assuming cable attenuation ≤ 3.0 dB/km and same 1.0 dB of connector loss for OM3 that the standard requires for OM4).
---	---

Optical Specifications

Bandwidth	High Performance EMB* (MHz.km): 2000 at 850 nm only Legacy Performance EMB* (MHz.km): 1500 at 850 nm / 500 at 1300 nm
Attenuation	At 850 nm max. ≤ 2.3 dB/km At 1300 nm max. ≤ 0.6 dB/km
Macrobend Loss	Mandrel Radius (mm): 37.5 / 15 / 7.5 Number of Turns: 100 / 2 / 2 Induced Attenuation (dB) at 850 nm: ≤ 0.05 / ≤ 0.1 / ≤ 0.2 Induced Attenuation (dB) at 1300 nm: ≤ 0.15 / ≤ 0.3 / ≤ 0.5
Numerical Aperture	0.200 \pm 0.015
*	Ensured via miniEMBc, per TIA/EIA 455-220A and IEC 60793-1-49, for high performance laser-based systems (up to 10 Gb/s).
**	OFL BW, per TIA/EIA 455-204 and IEC 60793-1-41, for legacy and LED-based systems (typically up to 100 Mb/s).

Dimensional Specifications

Core Diameter	50.0 \pm 2.5 μ m
Cladding Diameter	125.0 \pm 1.0 μ m
Core-Clad Concentricity	≤ 1.5 μ m
Cladding Non-Circularity	$\leq 1.0\%$
Core Non-Circularity	$\leq 5.0\%$
Coating Diameter	242 \pm 5 μ m
Coating-Cladding Concentricity	< 12 μ m

Environmental

Environmental Test	Test Condition	Induced Attenuation 850 nm & 1300 nm (dB/km)
Temperature Dependence	-60°C to +85°C	≤ 0.10
Temperature Humidity Cycling	-10°C to +85°C and 4% to 98% RH	≤ 0.10
Water Immersion	23°C \pm 2°C	≤ 0.20
Heat Aging	85°C \pm 2°C	≤ 0.20
Damp Heat	85°C at 85% RH	≤ 0.20
Operating Temperature Range	-60°C to +85°C	

Mechanical Specifications

Proof Test	The entire fiber length is subjected to a tensile stress ≥ 100 kpsi (0.7 GN/m ²).
Length	Fiber lengths available up to 17.6 km/spool.

tML[®] 24- FO Dark Fiber Module 4x 24F MPO without Pins/12x 12F MPO with Pins 50/125 μ OM3, SR4

Performance Characterizations

Refractive Index Difference	1%
Effective Group Index of Refraction	850 nm: 1.480 1300 nm: 1.479
Fatigue Resistance Parameter (nd)	20
Coating Strip Force	Dry: 0.6 lbs (2.7N) Wet: 14 days in 23°C water soak: 0.6 lbs (2.7N)
Chromatic Dispersion	Zero Dispersion Wavelength (λ_0): 1295 nm $\leq \lambda_0 \leq$ 1315 nm Zero Dispersion Slope (S0): ≤ 0.101 ps/(nm ² *km)

Product variants & accessories

Art.-No.	Description
TML-M12MPP/04M2-09E	tML [®] 24- FO Dark Fiber Module 4x 24F MPO without Pins/12x 12F MPO with Pins 9/125 μ OS2, LR4
TML-M12MPP/04M2-50G3	tML [®] 24- FO Dark Fiber Module 4x 24F MPO without Pins/12x 12F MPO with Pins 50/125 μ OM3, SR4
TML-M12MPP/04M2-50G4	tML [®] 24- FO Dark Fiber Module 4x 24F MPO without Pins/12x 12F MPO with Pins 50/125 μ OM4, SR4
TML-M12MPP/04M2-50G5	tML [®] 24- FO Dark Fiber Module 4x 24F MPO without Pins/12x 12F MPO with Pins 50/125 μ OM5, SR4