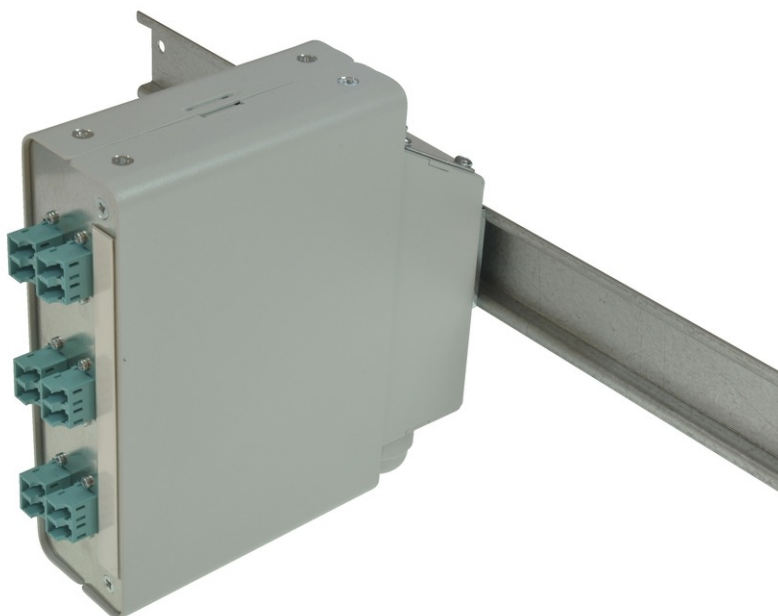


tBL[®] - DIN rail splice housing MM 6x LC Duplex OM2, splice ready prepared

tBL[®] - tde Basic Link (FO Enclosures)

The FO enclosures of the tBL[®] - tde Basic Link series are optimized products with a high functionality and an easy handling at the installation. The program includes splice and breakout boxes for 19 inch, wall and DIN rail mounting. These products are characterized by a high port density and an optimal fiber management, so that the permissible bending radii can't be undercut. Moreover, there are no sharp corners or edges, to avoid damage to the pigtails and buffer tubes. The front plates are removable. There are versions for E2000, FC, PC, LC, MPO / MTP, MTRJ, MU, SC, and ST. These products can be obtained with or without equipment. In addition, there are also special versions with IP66 for outdoor and offshore applications.

**tde[®]** trans data elektronik GmbH**Headquarter address:**

Lingener Str. 2
D-49626 Bippen/Ohrte
Tel.: +49 5435 9511 0
Fax.: +49 5435 9511 32

Sales office address:

Prinz-Friedrich-Karl-Str. 46
D-44135 Dortmund
Tel.: +49 231 8805 61 13
Fax.: +49 231 8805 61 15

info@tde.de | www.tde.de

tBL® - DIN rail splice housing MM 6x LC Duplex OM2, splice ready prepared

Technical Data

Pre-mounted	6 LC duplex adapters MM 12 LC Fiber pigtails 50/125µ OM2 2.0 meters 12 x Colors, splice ready prepared 12 Crimp Splice protectors 1 Splice cassette 1 Splice holder 1 Cable entry vertical 1 Mounting clip (for mounting on rail housing) 1 Gland M20 for cable entry
Alternative pre-mounted	TBL-H06-xxLCD50yz (see below)
xx	(01 - 06) quantity of adapters
y	(S)plice ready prepared
z	With(O)ut Crimp Splice protectors

FO DIN rail splice module

Housing	Alu-sheet, 1 mm
Dimensions	141.4 x 141 x 42.8 mm
Colour	powdered in RAL 9005 (black)

FO DIN rail splice module

Front panel	Alu-sheet
	incl. labeling strip
Configuration	Attachment up to 6x LC Duplex, 6x SC Simplex or 6x E2000 Simplex adapters

FO Adapters

Type	LC Duplex
Application	Multimode OM2
Design	One-Piece with Flange
Connector style	SC Simplex
Color	Beige
Material	Plastic
Sleeve	Zirkonia Straight Split
Shutter	-
Manufacturer	tde

FO Pigtails Standard

FO Connectors

Connector Type	LC Unibody Simplex
Housing	Plastic, Beige
Ferrule	Zirkonia Straight Split, Spring-loaded Axially

tBL[®] - DIN rail splice housing MM 6x LC Duplex OM2, splice ready prepared

Ferrule Hole	126 µ
Mating Cycles	1.000
Operating Temperature	-40°C up to +75°C
Strain Relief to	100 N
Manufacturer	tde

Optical performance

Fiber	Type	Wavelength	Insertion loss typ.	Insertion loss max.	Return loss min.
50/125µ OM2	LC	850 nm	≤ 0.25 dB	0.45 dB	30 dB
62.5/125µ OM1	LC	850 nm	≤ 0.25 dB	0.45 dB	

F0 Cables

Tight Buffer	Low smoke (IEC 61034 and EN 50268) and free of halogens (LSOH)
	Non corrosive after IEC 60754-2 and EN 50267
	Flame resistant after IEC 60332-3C and EN 50266-2-4
	Completely dry design
	Free from metal, no grounding problems and potential differences
	Tight Buffer for simple and direct connector mounting

Characteristics

Fiber Count	1 (Tight Buffer)
Core-Ø	0.9 mm
Coreweight	1 kg/km
Min. Bending radius - Installation	30 mm
Min. Bending radius - Operation	30 mm
Removal	1500 mm
Fire load	0.15 MJ/m
Temperature range - Installation	-5 to +50°C
Temperature range - Operation	-20 to +60°C
Temperature range - Transport / Lagerung	-25 to +70°C

F0 Fiber

Type	Corning 50/125µ OM2 multimode fiber
Manufacturer	Corning

Optical Specifications

Bandwidth	500 at 850 nm / 500 at 1300 nm
-----------	--------------------------------

tBL[®] - DIN rail splice housing MM 6x LC Duplex OM2, splice ready prepared

Attenuation	At 850 nm max. ≤ 2.5 dB/km At 1300 nm max. ≤ 0.8 dB/km
Numerical Aperture	0.200 ± 0.015

Dimensional Specifications

Core Diameter	50.0 ± 3.0 μ m
Cladding Diameter	125.0 ± 2.0 μ m
Core-Clad Concentricity	≤ 3.0 μ m
Cladding Non-Circularity	$< 2.0\%$
Core Non-Circularity	$\leq 5.0\%$
Coating Diameter	245 ± 5 μ m
Coating-Cladding Concentricity	< 12 μ m

Environmental Specifications

Environmental Test	Test Condition	Induced Attenuation 850 nm and 1300 nm (dB/km)
Temperature Dependence	-60°C to +85°C	≤ 0.20
Temperature Humidity Cycling	-10°C to +85°C and 4% to 98% RH	≤ 0.20
Operating Temperature Range	-60°C to +85°C	

Mechanical Specifications

Proof Test	The entire fiber length is subjected to a tensile stress ≥ 100 kpsi (0.7 GN/m ²).
Length	Fiber lengths available up to 8.8 km/spool.

Performance Characterizations

Refractive Index Difference	2%
Effective Group Index of Refraction	850 nm: 1.490 1300 nm: 1.486
Fatigue Resistance Parameter (nd)	20
Coating Strip Force	Dry: 0.6 lbs (2.7N) Wet: 14 days in 23°C water soak: 0.6 lbs (2.7N)
Chromatic Dispersion	Zero Dispersion Wavelength (λ_0): 1300 nm $\leq \lambda_0 \leq 1320$ nm Zero Dispersion Slope (S0): ≤ 0.101 ps/(nm ² *km)

FO Splice Accessories

Type	splice cassette for DIN rail splice housing
Material	sheet steel
Colour	powdered in RAL 9005 (black)
Configuration	up to 2x 12 splices

tBL® - DIN rail splice housing MM 6x LC Duplex OM2, splice ready prepared

FO Splice Accessories

Type	FO Splice holder for 12 x Crimp splice protectors
Dimensions	40 x 26 x 6 mm
Material	Bright ABS, similar RAL 1013

FO Splice Accessories

Type	Crimp splice protector
Dimensions	31 x 3 x 1 mm

Type	Cable tie
Dimensions	75 x 2.5 mm

Type	FO Blind stopper
Application	For covering of unused adapter slots

FO Splice Accessories

Type	Cable gland M20
Color	light grey

Type	Locknut for cable gland M20
Color	light grey

FO DIN rail splice module

Colour	Alu-zinc
--------	----------

FO DIN rail splice module

Colour	zinc
--------	------

FO DIN rail splice module

Colour	Alu-zinc
Opening	for 1x M20 (PG13.5)

tBL[®] - DIN rail splice housing MM 6x LC Duplex OM2, splice ready prepared

Product variants & accessories

Art.-No.	Description
TBL-H06-06LCAD9AS	tBL [®] - DIN rail splice housing SM 6x LC APC Duplex OS2, splice ready prepared
TBL-H06-06LCD50-3S	tBL [®] - DIN rail splice housing MM 6x LC Duplex OM3, splice ready prepared
TBL-H06-06LCD50-4S	tBL [®] - DIN rail splice housing MM 6x LC Duplex OM4, splice ready prepared
TBL-H06-06LCD50S	tBL [®] - DIN rail splice housing MM 6x LC Duplex OM2, splice ready prepared
TBL-H06-06LCD9S	tBL [®] - DIN rail splice housing SM 6x LC Duplex OS2, splice ready prepared