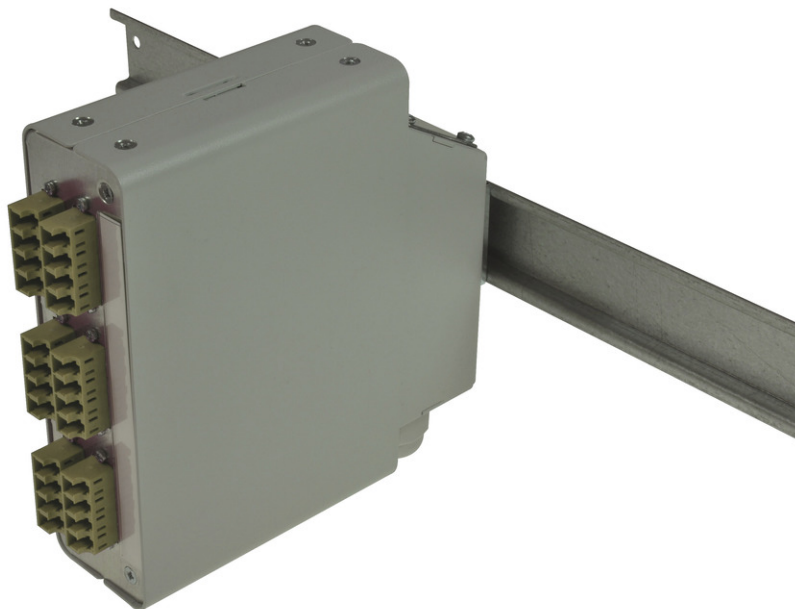


tBL[®] - HD DIN rail splice housing MM 3x LC Quad OM2, splice ready prepared



tBL[®] - tde Basic Link (FO Enclosures)

The FO enclosures of the tBL[®] - tde Basic Link series are optimized products with a high functionality and an easy handling at the installation. The program includes splice and breakout boxes for 19 inch, wall and DIN rail mounting. These products are characterized by a high port density and an optimal fiber management, so that the permissible bending radii can't be undercut. Moreover, there are no sharp corners or edges, to avoid damage to the pigtails and buffer tubes. The front plates are removable. There are versions for E2000, FC, PC, LC, MPO / MTP, MTRJ, MU, SC, and ST. These products can be obtained with or without equipment. In addition, there are also special versions with IP66 for outdoor and offshore applications.

The tBL[®] HD module can be used only in combination with the tde HD patch cord.



tde[®] trans data elektronik GmbH

Headquarter address:

Lingener Str. 2
D-49626 Bippen/Ohrte
Tel.: +49 5435 9511 0
Fax.: +49 5435 9511 32

Sales office address:

Prinz-Friedrich-Karl-Str. 46
D-44135 Dortmund
Tel.: +49 231 8805 61 13
Fax.: +49 231 8805 61 15

info@tde.de | www.tde.de

tBL[®] - HD DIN rail splice housing MM 3x LC Quad OM2, splice ready prepared

Technical Data

| | |
|-------------------------|--|
| Pre-mounted | 3 LC quad adapters MM 12 LC Fiber pigtails 50/125μ OM2 2.0 meters 12 x Colors, splice ready prepared 12 Crimp Splice protectors 1 Splice cassette 1 Splice holder 1 Cable entry vertical 1 Mounting clip (for mounting on rail housing) 1 Gland M20 for cable entry |
| Alternative pre-mounted | TBL-H06-xxLCQ50yz (see below) |
| xx | (01 - 06) quantity of adapters |
| y | (S)plice ready prepared |
| z | With(O)ut Crimp Splice protectors |

FO DIN rail splice module

| | |
|------------|------------------------------|
| Housing | Alu-sheet, 1 mm |
| Dimensions | 141.4 x 141 x 42.8 mm |
| Colour | powdered in RAL 9005 (black) |

FO DIN rail splice module

| | |
|---------------|---|
| Front panel | Alu-sheet |
| | incl. labeling strip |
| Configuration | Attachment up to 6x SC Duplex, 6x LC Quad (6x LCD), 6x ST Duplex adapters |

FO Adapters

| | |
|--------------|-------------------------|
| Type | LC Quad |
| Application | Multimode |
| Design | without flange |
| Footprint | SC Duplex |
| Color | Beige |
| Material | Plastic |
| Sleeve | Zirconia Straight Split |
| Shutter | -- |
| Manufacturer | tde |

FO Pigtails Standard

FO Connectors

| | |
|----------------|--|
| Connector Type | LC Unibody Simplex |
| Housing | Plastic, Beige |
| Ferrule | Zirconia Straight Split, Spring-loaded Axially |

tBL[®] - HD DIN rail splice housing MM 3x LC Quad OM2, splice ready prepared

| | |
|-----------------------|-------------------|
| Ferrule Hole | 126 µ |
| Mating Cycles | 1.000 |
| Operating Temperature | -40°C up to +75°C |
| Strain Relief to | 100 N |
| Manufacturer | tde |

Optical performance

| Fiber | Type | Wavelength | Insertion loss typ. | Insertion loss max. | Return loss min. |
|---------------|------|------------|---------------------|---------------------|------------------|
| 50/125µ OM2 | LC | 850 nm | ≤ 0.25 dB | 0.45 dB | 30 dB |
| 62.5/125µ OM1 | LC | 850 nm | ≤ 0.25 dB | 0.45 dB | |

F0 Cables

| | |
|--------------|--|
| Tight Buffer | Low smoke (IEC 61034 and EN 50268) and free of halogens (LSOH) |
| | Non corrosive after IEC 60754-2 and EN 50267 |
| | Flame resistant after IEC 60332-3C and EN 50266-2-4 |
| | Completely dry design |
| | Free from metal, no grounding problems and potential differences |
| | Tight Buffer for simple and direct connector mounting |

Characteristics

| | |
|--|------------------|
| Fiber Count | 1 (Tight Buffer) |
| Core-Ø | 0.9 mm |
| Coreweight | 1 kg/km |
| Min. Bending radius - Installation | 30 mm |
| Min. Bending radius - Operation | 30 mm |
| Removal | 1500 mm |
| Fire load | 0.15 MJ/m |
| Temperature range - Installation | -5 to +50°C |
| Temperature range - Operation | -20 to +60°C |
| Temperature range - Transport / Lagerung | -25 to +70°C |

F0 Fiber

| | |
|--------------|-------------------------------------|
| Type | Corning 50/125µ OM2 multimode fiber |
| Manufacturer | Corning |

Optical Specifications

| | |
|-----------|--------------------------------|
| Bandwidth | 500 at 850 nm / 500 at 1300 nm |
|-----------|--------------------------------|

tBL[®] - HD DIN rail splice housing MM 3x LC Quad OM2, splice ready prepared

| | |
|--------------------|---|
| Attenuation | At 850 nm max. ≤ 2.5 dB/km At 1300 nm max. ≤ 0.8 dB/km |
| Numerical Aperture | 0.200 ± 0.015 |

Dimensional Specifications

| | |
|--------------------------------|-------------------------|
| Core Diameter | 50.0 ± 3.0 μ m |
| Cladding Diameter | 125.0 ± 2.0 μ m |
| Core-Clad Concentricity | ≤ 3.0 μ m |
| Cladding Non-Circularity | $< 2.0\%$ |
| Core Non-Circularity | $\leq 5.0\%$ |
| Coating Diameter | 245 ± 5 μ m |
| Coating-Cladding Concentricity | < 12 μ m |

Environmental Specifications

| Environmental Test | Test Condition | Induced Attenuation 850 nm and 1300 nm (dB/km) |
|------------------------------|---------------------------------|--|
| Temperature Dependence | -60°C to +85°C | ≤ 0.20 |
| Temperature Humidity Cycling | -10°C to +85°C and 4% to 98% RH | ≤ 0.20 |
| Operating Temperature Range | -60°C to +85°C | |

Mechanical Specifications

| | |
|------------|--|
| Proof Test | The entire fiber length is subjected to a tensile stress ≥ 100 kpsi (0.7 GN/m ²). |
| Length | Fiber lengths available up to 8.8 km/spool. |

Performance Characterizations

| | |
|-------------------------------------|--|
| Refractive Index Difference | 2% |
| Effective Group Index of Refraction | 850 nm: 1.490 1300 nm: 1.486 |
| Fatigue Resistance Parameter (nd) | 20 |
| Coating Strip Force | Dry: 0.6 lbs (2.7N) Wet: 14 days in 23°C water soak: 0.6 lbs (2.7N) |
| Chromatic Dispersion | Zero Dispersion Wavelength (λ_0): 1300 nm $\leq \lambda_0 \leq 1320$ nm Zero Dispersion Slope (S0): ≤ 0.101 ps/(nm ² *km) |

FO Splice Accessories

| | |
|---------------|---|
| Type | splice cassette for DIN rail splice housing |
| Material | sheet steel |
| Colour | powdered in RAL 9005 (black) |
| Configuration | up to 2x 12 splices |

tBL® - HD DIN rail splice housing MM 3x LC Quad OM2, splice ready prepared

FO Splice Accessories

| | |
|------------|---|
| Type | FO Splice holder for 12 x Crimp splice protectors |
| Dimensions | 40 x 26 x 6 mm |
| Material | Bright ABS, similar RAL 1013 |

FO Splice Accessories

| | |
|------------|------------------------|
| Type | Crimp splice protector |
| Dimensions | 31 x 3 x 1 mm |

| | |
|------------|-------------|
| Type | Cable tie |
| Dimensions | 75 x 2.5 mm |

| | |
|-------------|--------------------------------------|
| Type | FO Blind stopper |
| Application | For covering of unused adapter slots |

FO Splice Accessories

| | |
|-------|-----------------|
| Type | Cable gland M20 |
| Color | light grey |

| | |
|-------|-----------------------------|
| Type | Locknut for cable gland M20 |
| Color | light grey |

FO DIN rail splice module

| | |
|--------|----------|
| Colour | Alu-zinc |
|--------|----------|

FO DIN rail splice module

| | |
|--------|------|
| Colour | zinc |
|--------|------|

FO DIN rail splice module

| | |
|---------|---------------------|
| Colour | Alu-zinc |
| Opening | for 1x M20 (PG13.5) |

tBL[®] - HD DIN rail splice housing MM 3x LC Quad OM2, splice ready prepared

Product variants & accessories

| Art.-No. | Description |
|--------------------|--|
| TBL-H06-03LCQ50-3S | tBL [®] - HD DIN rail splice housing MM 3x LC Quad OM3, splice ready prepared |
| TBL-H06-03LCQ50-4S | tBL [®] - HD DIN rail splice housing MM 3x LC Quad OM4, splice ready prepared |
| TBL-H06-03LCQ50S | tBL [®] - HD DIN rail splice housing MM 3x LC Quad OM2, splice ready prepared |
| TBL-H06-03LCQ9S | tBL [®] - HD DIN rail splice housing SM 3x LC Quad OS2, splice ready prepared |