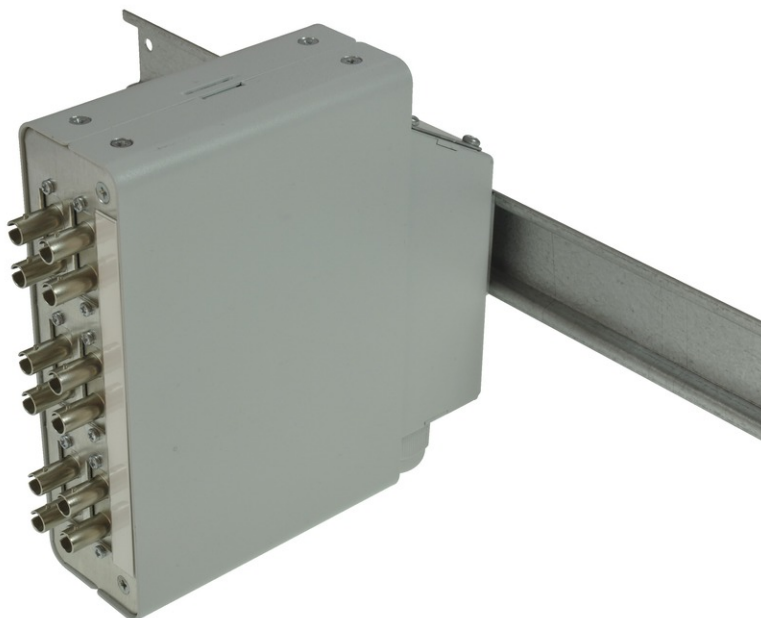


tBL<sup>®</sup> - DIN rail splice housing MM 3x ST Duplex OM1, splice ready prepared



## tBL<sup>®</sup> - tde Basic Link (FO Enclosures)

The FO enclosures of the tBL<sup>®</sup> - tde Basic Link series are optimized products with a high functionality and an easy handling at the installation. The program includes splice and breakout boxes for 19 inch, wall and DIN rail mounting. These products are characterized by a high port density and an optimal fiber management, so that the permissible bending radii can't be undercut. Moreover, there are no sharp corners or edges, to avoid damage to the pigtails and buffer tubes. The front plates are removable. There are versions for E2000, FC, PC, LC, MPO / MTP, MTRJ, MU, SC, and ST. These products can be obtained with or without equipment. In addition, there are also special versions with IP66 for outdoor and offshore applications.



**tde<sup>®</sup>** trans data elektronik GmbH

### Headquarter address:

Lingener Str. 2  
D-49626 Bippen/Ohrte  
Tel.: +49 5435 9511 0  
Fax.: +49 5435 9511 32

### Sales office address:

Prinz-Friedrich-Karl-Str. 46  
D-44135 Dortmund  
Tel.: +49 231 8805 61 13  
Fax.: +49 231 8805 61 15

info@tde.de | www.tde.de

tBL® - DIN rail splice housing MM 3x ST Duplex OM1, splice ready prepared

## Technical Data

Pre-mounted	3 ST duplex adapters MM 6 ST Fiber pigtails 62.5/125µ OM1 2.0 meters 12 x Colors, splice ready prepared 6 Crimp Splice protectors 1 Splice cassette 1 Splice holder 1 Cable entry vertical 1 Mounting clip (for mounting on rail housing) 1 Gland M20 for cable entry
Alternative pre-mounted	TBL-H06-xxSTD62yz (see below)
xx	(01 - 06) quantity of adapters
y	(S)plice ready prepared
z	With(O)ut Crimp Splice protectors

## FO DIN rail splice module

Housing	Alu-sheet, 1 mm
Dimensions	141.4 x 141 x 42.8 mm
Colour	powdered in RAL 9005 (black)

## FO DIN rail splice module

Front panel	Alu-sheet
	incl. labeling strip
Configuration	Attachment up to 6x SC Duplex, 6x LC Quad (6x LCD), 6x ST Duplex adapters

## FO Adapters

Typ	ST Duplex
Application	Singlemode/Multimode
Design	with flange
Connector style	ST Duplex
Material	Metal
Sleeve	Zirconia Straight Split
Shutter	--
Manufacturer	tde

## FO Pigtails Standard

### FO Connectors

Connector Type	ST
Housing	Metal
Ferrule	Zirconia Straight Split
Ferrule Hole	126 µ

## tBL® - DIN rail splice housing MM 3x ST Duplex OM1, splice ready prepared

Mating Cycles	1.000
Operating Temperature	-40°C up to +75°C
Strain Relief to	150 N
Manufacturer	tde

### Optical performance

Fiber	Type	Wavelength	Insertion loss typ.	Insertion loss max.	Return loss min.
50/125µ OM2	ST	850 nm	≤ 0.25 dB	0.45 dB	30 dB
62.5/125µ OM1	ST	850 nm	≤ 0.25 dB	0.45 dB	

### FO Cables

Tight Buffer	Low smoke (IEC 61034 and EN 50268) and free of halogens (LSOH)
	Non corrosive after IEC 60754-2 and EN 50267
	Flame resistant after IEC 60332-3C and EN 50266-2-4
	Completely dry design
	Free from metal, no grounding problems and potential differences
	Tight Buffer for simple and direct connector mounting

### Characteristics

Fiber Count	1 (Tight Buffer)
Core-Ø	0.9 mm
Coreweight	1 kg/km
Min. Bending radius - Installation	30 mm
Min. Bending radius - Operation	30 mm
Removal	1500 mm
Fire load	0.15 MJ/m
Temperature range - Installation	-5 to +50°C
Temperature range - Operation	-20 to +60°C
Temperature range - Transport / Lagerung	-25 to +70°C

### FO Fiber

Type	Corning 62.5/125µ OM1 multimode fiber
Manufacturer	Corning

### Optical Specifications

Bandwidth	160/200 at 850 nm / 500 at 1300 nm
Attenuation	At 850 nm max. ≤ 3.0 dB/km At 1300 nm max. ≤ 0.7 dB/km

## tBL® - DIN rail splice housing MM 3x ST Duplex OM1, splice ready prepared

Numerical Aperture	0.275 ± 0.015
--------------------	---------------

### Dimensional Specifications

Core Diameter	62.5 ± 3.0 µm
Cladding Diameter	125.0 ± 2.0 µm
Core-Clad Concentricity	≤ 3.0 µm
Cladding Non-Circularity	< 2.0%
Core Non-Circularity	≤ 5.0%
Coating Diameter	245 ± 5 µm
Coating-Cladding Concentricity	< 12 µm

### Environmental Specifications

Environmental Test	Test Condition	Induced Attenuation 850 nm and 1300 nm (dB/km)
Temperature Dependence	-60°C to +85°C	≤ 0.20
Temperature Humidity Cycling	-10°C to +85°C and 4% to 98% RH	≤ 0.20
Operating Temperature Range	-60°C to +85°C	

### Mechanical Specifications

Proof Test	The entire fiber length is subjected to a tensile stress ≥ 100 kpsi (0.7 GN/m²).
Length	Fiber lengths available up to 17.6 km/spool.

### Performance Characterizations

Refractive Index Difference	2%
Effective Group Index of Refraction	850 nm: 1.496 1300 nm: 1.491
Fatigue Resistance Parameter (nd)	20
Coating Strip Force	Dry: 0.6 lbs (2.7N) Wet: 14 days in 23°C water soak: 0.6 lbs (2.7N)
Chromatic Dispersion	Zero Dispersion Wavelength (λ <sub>0</sub> ): 1332 nm ≤ λ <sub>0</sub> ≤ 1354 nm Zero Dispersion Slope (S <sub>0</sub> ): ≤ 0.097 ps/(nm²*km)

### FO Splice Accessories

Type	splice cassette for DIN rail splice housing
Material	sheet steel
Colour	powdered in RAL 9005 (black)
Configuration	up to 2x 12 splices

tBL<sup>®</sup> - DIN rail splice housing MM 3x ST Duplex OM1, splice ready prepared

## FO Splice Accessories

Type	FO Splice holder for 12 x Crimp splice protectors
Dimensions	40 x 26 x 6 mm
Material	Bright ABS, similar RAL 1013

## FO Splice Accessories

Type	Crimp splice protector
Dimensions	31 x 3 x 1 mm

Type	Cable tie
Dimensions	75 x 2.5 mm

Type	FO Blind stopper
Application	For covering of unused adapter slots

## FO Splice Accessories

Type	Cable gland M20
Color	light grey

Type	Locknut for cable gland M20
Color	light grey

## FO DIN rail splice module

Colour	Alu-zinc
--------	----------

## FO DIN rail splice module

Colour	zincd
--------	-------

## FO DIN rail splice module

Colour	Alu-zinc
Opening	for 1x M20 (PG13.5)

tBL<sup>®</sup> - DIN rail splice housing MM 3x ST Duplex OM1, splice ready prepared

## Product variants & accessories

Art.-No.	Description
TBL-H06-03STD50-3S	tBL <sup>®</sup> - DIN rail splice housing MM 3x ST Duplex OM3, splice ready prepared
TBL-H06-03STD50-4S	tBL <sup>®</sup> - DIN rail splice housing MM 3x ST Duplex OM4, splice ready prepared
TBL-H06-03STD50S	tBL <sup>®</sup> - DIN rail splice housing MM 3x ST Duplex OM2, splice ready prepared
TBL-H06-03STD62S	tBL <sup>®</sup> - DIN rail splice housing MM 3x ST Duplex OM1, splice ready prepared
TBL-H06-03STD9S	tBL <sup>®</sup> - DIN rail splice housing SM 3x ST Duplex OS2, splice ready prepared