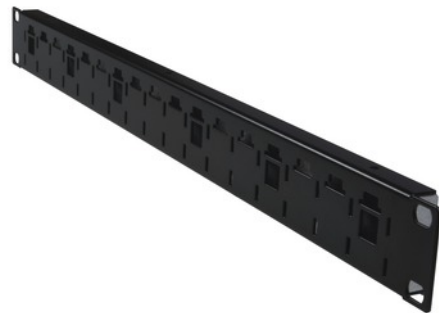


tPM - Cover for Panel 19" 1U



tPM - tde Patch Cord Management

tPM - Patch Cable Management System for orderly patch cord management with integrated strain relief. The utility patent protected three-part system consists of a 19" panel, cable guide holder and foam inserts. The cable guide holders can be fitted with different foam inserts and fixed in 17 different positions on the 19" panel. In addition up to 6 conventional plastic or metal rings can be used. Therefore a wide variety of cable volume will be taken into account.

The simple mounting and locking mechanism of the cable guide holders works without tools. The foam inserts are available with cut-outs for a variety of cable types and cable volume. The support plate is prepared for attachment a bulkhead plate to sealing the U.



tde[®] trans data elektronik GmbH

Headquarter address:

Lingener Str. 2
D-49626 Bippen/Ohrte
Tel.: +49 5435 9511 0
Fax.: +49 5435 9511 32

Sales office address:

Prinz-Friedrich-Karl-Str. 46
D-44135 Dortmund
Tel.: +49 231 914 36 99
Fax.: +49 231 914 31 29

info@tde.de | www.tde.de

tPM - Cover for Panel 19" 1U

Product variants & accessories

Art.-No.	Description
TPM-19/1HE-A	tPM - Cover for Panel 19" 1U
TPM-19/1HE-SW	tPM - Panel 19" 1U without cable guide holders, black
TPM-KB-SW	tPM - Cable guide holder for panel 19" 1U without foam insert, black
TPM-SB06L-SW	tPM - Foam insert for cable guide holder, "sawtooth shape", flattened, black
TPM-SB06-SW	tPM - Foam insert for cable guide holder, "sawtooth shape", black
TPM-SB48-SW	tPM - Foam insert for cable guide holder, 48 cut-outs, Ø 1mm, black