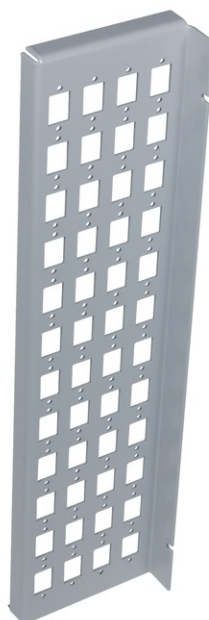


tBL[®] - FO distributor plate for wall mount enclosure 300x300x85mm, 48x SC Simplex



tBL[®] - tde Basic Link (FO Enclosures)

The FO enclosures of the tBL[®] - tde Basic Link series are optimized products with a high functionality and an easy handling at the installation. The program includes splice and breakout boxes for 19 inch, wall and DIN rail mounting. These products are characterized by a high port density and an optimal fiber management, so that the permissible bending radii can't be undercut. Moreover, there are no sharp corners or edges, to avoid damage to the pigtails and buffer tubes. The front plates are removable. There are versions for E2000, FC, PC, LC, MPO / MTP, MTRJ, MU, SC, and ST. These products can be obtained with or without equipment. In addition, there are also special versions with IP66 for outdoor and offshore applications.



tde[®] trans data elektronik GmbH

Headquarter address:

Lingener Str. 2
D-49626 Bippen/Ohrte
Tel.: +49 5435 9511 0
Fax.: +49 5435 9511 32

Sales office address:

Prinz-Friedrich-Karl-Str. 46
D-44135 Dortmund
Tel.: +49 231 8805 61 13
Fax.: +49 231 8805 61 15

info@tde.de | www.tde.de

tBL[®] - FO distributor plate for wall mount enclosure 300x300x85mm, 48x SC Simplex

Technical Data

Material	Steel 1203, RAL 7035
Configuration	Attachment up to 48x SC Simplex, LC Duplex or E2000 Simplex adapter

Product variants & accessories

Art.-No.	Description
TBL-W48SC	tBL [®] - FO distributor plate for wall mount enclosure 300x300x85mm, 48x SC Simplex