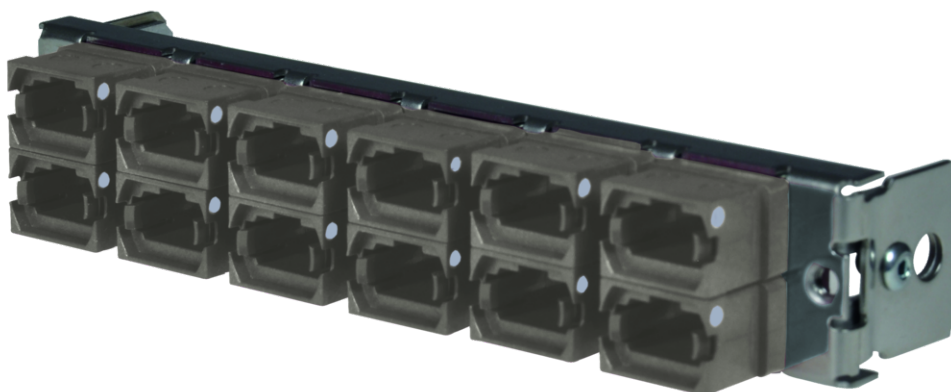


tML<sup>®</sup> - partial front plate with 12x MPO/MTP<sup>®</sup> Type B (Key Up/Up) for the Rack Mount Enclosure 1U



## tML<sup>®</sup> 24

tML<sup>®</sup> 24 is a patented, modular cabling system consisting of the three key components module, trunk cable and rack mount enclosure. The system components are 100 percent manufactured, pre-assembled and tested in Germany. They enable plug-and-play installation on site – especially in data centres, but also in industrial environments – within the shortest possible time. Heart of the system are the rear MPO/MTP<sup>®</sup> 24 fiber and Telco connectors, which can be used to connect at least six or twelve ports at a time. Depending on the module configuration, transfer rates of up to 400G are currently possible with SR4. The fibre optic and TP modules can be used together in a module carrier with a very high port density. The tde offers its tML<sup>®</sup> cabling system as a proven tML<sup>®</sup> standard system and in the highly innovative variants tML<sup>®</sup>Xtended and now tML<sup>®</sup> 32 for extreme scalability and very easy migration to higher transmission rates such as 40G, 100G, 200G and 400G.

The tML<sup>®</sup> - FO partial front panel MPO/MTP<sup>®</sup> is intended for the installation in the tML<sup>®</sup> Rack Mount Enclosure 1U (for 8 x Modules).



**tde<sup>®</sup>** trans data elektronik GmbH

**Headquarter address:**

Lingener Str. 2  
D-49626 Bippen/Ohrte  
Tel.: +49 5435 9511 0  
Fax.: +49 5435 9511 32

**Sales office address:**

Prinz-Friedrich-Karl-Str. 46  
D-44135 Dortmund  
Tel.: +49 231 8805 61 13  
Fax.: +49 231 8805 61 15

info@tde.de | www.tde.de

tML<sup>®</sup> - partial front plate with 12x MPO/MTP<sup>®</sup> Type B (Key Up/Up) for the Rack Mount Enclosure 1U

## Technical Data

Pre-mounted	12 x MPO/MTP <sup>®</sup> Adapter (grey)
	QS-Managementsystem ISO 9001, ISO 14001 and TL 9000

## tML<sup>®</sup> Standard - FO Modules MPO/MTP<sup>®</sup>

Front Panel	Stainless steel
Dimensions	108 x 20 mm

## FO Adapters

Type	MPO/MTP <sup>®</sup>
Application	Multimode OM1/OM2
Design	without Flange
Connector style	SC Simplex
Key Orientation	Type B, Key up/up
Color	Grey
Material	Plastic
Sleeve	--
Shutter	--
Standards	IEC 61754-7 TIA 604-5
Manufacturer	US Conec

## Product variants & accessories

Art.-No.	Description
TML-M12MP-GR	tML <sup>®</sup> - partial front plate with 12x MPO/MTP <sup>®</sup> Type B (Key Up/Up) for the Rack Mount Enclosure 1U
TML-M12MP-LG	tML <sup>®</sup> - partial front plate with 12x MPO/MTP <sup>®</sup> Type A (Key Up/Down) OM5 Limegreen for the Rack Mount Enclosure 1U
TML-M12MP-TK	tML <sup>®</sup> - partial front plate with 12x MPO/MTP <sup>®</sup> Type A (Key Up/Down) OM3 aqua for the Rack Mount Enclosure 1U
TML-M12MP-VI	tML <sup>®</sup> - partial front plate with 12x MPO/MTP <sup>®</sup> Type A (Key Up/Down) OM4 magenta for the Rack Mount Enclosure 1U