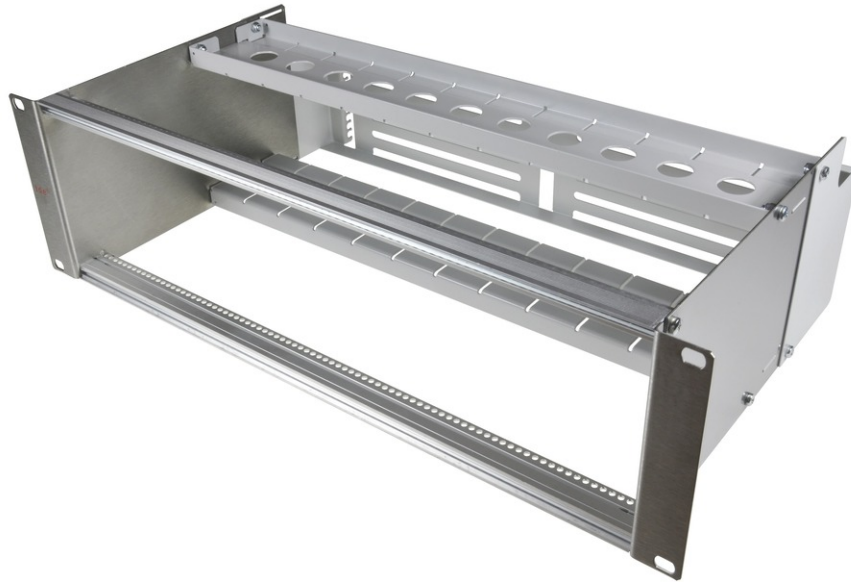


tDF[®] - sub rack 19"/3U/84HP with integrated loose tube management (6.4mm flex tube)



tDF[®] - tde Distribution Frame (ODF)

tDF[®] is a modular Central Office solution with the highest packing density. At 46U, up to 4032 fibers can be terminated with LC. In developing the tde has taken primarily attention on the user-friendly installation. So the patented modules are fully be fitted from the front. A 19-inch sub rack occupies three height units and is equipped with twelve splice modules. Per sub rack, up to 288 fibers can be terminated with LC. The splices will be stored in standard splice cassettes. A unique feature of the splice module is the built-in loose tube over length management, which compared to conventional solutions saves an additional rack unit for the over length tray. The trunk cables are brought to the sub rack side and splitted there. This results in very short stripping lengths for the trunk cables. Due to the tML[®] compatibility also MPO/MTP[®] modules can be equipped in the same sub rack. The modular design of the tDF rack system offers maximum flexibility. The racks can be ordered customized completely preconfigured.



tde[®] trans data elektronik GmbH

Headquarter address:

Lingener Str. 2
D-49626 Bippen/Ohrte
Tel.: +49 5435 9511 0
Fax.: +49 5435 9511 32

Sales office address:

Prinz-Friedrich-Karl-Str. 46
D-44135 Dortmund
Tel.: +49 231 914 36 99
Fax.: +49 231 914 31 29

info@tde.de | www.tde.de

tDF[®] - sub rack 19"/3U/84HP with integrated loose tube management (6.4mm flex tube)

Technical Data

Housing	Sides: Stainless steel V2A K240
	Guide plates: steel 1203 RAL 7035
	Profile rails: anodized aluminum
Inscription	By means of label strips on the modules
Assembly	84HP for up to 12 x 3U/7HP modules, i.e. up to 288 fibers
Dimensions	19", 3U, 278,5mm
	QS-Managementsystem ISO 9001, ISO 14001 and TL 9000

Product variants & accessories

Art.-No.	Description
TDF-3U-AD-32	tDF [®] - Distance adapters 32mm for tDF [®] subrack
TDF-3U-BP	tDF [®] - Loose tube management (6,4mm flex tube) for tDF [®] subrack
TDF-3U-CR-3	tDF [®] - Cable guide holder metal, 3fold for tDF [®] subrack
TDF-SR-3U	tDF [®] - sub rack 19"/3U/84HP
TDF-SR-3U-BP	tDF [®] - sub rack 19"/3U/84HP with integrated loose tube management (6.4mm flex tube)