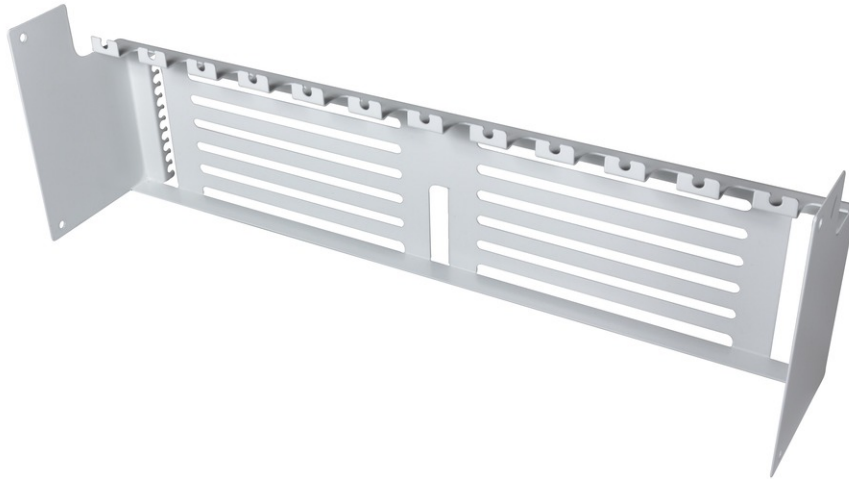


tDF[®] - Loose tube management (6,4mm Flexible tube) for tDF[®] subrack



tDF[®] - tde Distribution Frame (ODF)

tDF[®] is a modular Central Office solution with the highest packing density. At 46U, up to 4032 fibers can be terminated with LC. In developing the tde has taken primarily attention on the user-friendly installation. So the patented modules are fully be fitted from the front. A 19-inch sub rack occupies three height units and is equipped with twelve splice modules. Per sub rack, up to 288 fibers can be terminated with LC. The splices will be stored in standard splice cassettes. A unique feature of the splice module is the built-in loose tube over length management, which compared to conventional solutions saves an additional rack unit for the over length tray. The trunk cables are brought to the sub rack side and splitted there. This results in very short stripping lengths for the trunk cables. Due to the tML[®] compatibility also MPO/MTP[®] modules can be equipped in the same sub rack. The modular design of the tDF rack system offers maximum flexibility. The racks can be ordered customized completely preconfigured.



tde[®] trans data elektronik GmbH

Headquarter address:

Lingener Str. 2
D-49626 Bippen/Ohrte
Tel.: +49 5435 9511 0
Fax.: +49 5435 9511 32

Sales office address:

Prinz-Friedrich-Karl-Str. 46
D-44135 Dortmund
Tel.: +49 231 914 36 99
Fax.: +49 231 914 31 29

info@tde.de | www.tde.de

tDF[®] - Loose tube management (6,4mm Flexible tube) for tDF[®] subrack

Technical Data

Type	Loose tube management for tDF [®] subrack
Material	Sheet steel, 1,0mm
Dimensions	19", 3U, 53.5mm
Mounting	On the back at the tDF [®] subrack with four enclosed screws.
	QS-Managementsystem ISO 9001, ISO 14001 and TL 9000

Product variants & accessories

Art.-No.	Description
TDF-3U-BP	tDF [®] - Loose tube management (6,4mm Flexible tube) for tDF [®] subrack