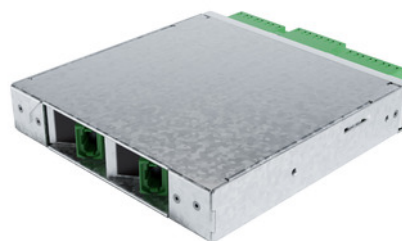


tML[®] Xtended - FO Module 5HP black 2x MPO/MTP[®] without Pins/12x LC Duplex 9/125µ OS2



tML[®] Xtended

tML[®] Xtended is a patented, modular cabling system consisting of the three key components module, trunk cable and rack mount enclosure. The system components are 100 percent manufactured, pre-assembled and tested in Germany. They enable plug-and-play installation on site – especially in data centres, but also in industrial environments – within the shortest possible time. Heart of the system are the rear MPO/MTP[®] 12 fiber and Telco connectors, which can be used to connect at least six or twelve ports at a time. Depending on the module configuration, transfer rates of up to 200G are currently possible with SR4. The fibre optic and TP modules can be used together in a module carrier with a very high port density. The tde offers its tML[®] cabling system as a proven tML[®] standard system and in the highly innovative variants tML[®] 24 system and now tML[®] 32 system for extreme scalability and very easy migration to higher transmission rates such as 40G, 100G, 200G and 400G.

The utility patent protected tML[®] Xtended - module will be installed in the link on one side rotated 180 degrees. The associated tML[®] Xtended trunk cable has a type B pin out. The complete link corresponds to EIA / TIA "Method B". The advantage is that before and after migration uniformly configured patch cables and modules are used.



tde[®] trans data elektronik GmbH

Headquarter address:

Lingener Str. 2
D-49626 Bippen/Ohrte
Tel.: +49 5435 9511 0
Fax.: +49 5435 9511 32

Sales office address:

Prinz-Friedrich-Karl-Str. 46
D-44135 Dortmund
Tel.: +49 231 8805 61 13
Fax.: +49 231 8805 61 15

info@tde.de | www.tde.de

tML[®] Xtended - FO Module 5HP black 2x MPO/MTP[®] without Pins/12x LC Duplex 9/125μ OS2

The tML[®] Xtended - FO Module MPO/MTP[®] is intended for the installation in the tML[®] Rack Mount Enclosure 3U (for 17 x Modules).

Technical Data

The end faces of the connectors are optimized by means of Lasercleaving and machine polish. The MPO/MTP[®] plug has a defined fiber height of 1 - 3.5μ. The max. adjacent fiber height difference is 0.2μm and for all fibers 0.3μm. All system components (modules, trunk cables and patch cords) are co-ordinated for the reaching of the performance particularly. The module is marked with sequential serial number and article number. The modules are ROHS compliant.

Entry	2 x MPO/MTP [®] Female Adapter (green) back
Exit	6 x LC Quad Adapter (blue) front
Tests	Interferometer, Insertion Loss, Return Loss and Visual Final Inspection; all measured values are electronically archived
	QS-Managementsystem ISO 9001, ISO 14001 and TL 9000

Box	Galvanized steel sheet
Front Panel	black

FO Adapters

Type	MPO/MTP [®]
Application	Singlemode OS2 APC
Design	without Flange
Connector style	SC Simplex
Key Orientation	Type A, Key up/down
Color	Green
Material	Plastic
Sleeve	--
Shutter	--
Standards	IEC 61754-7 TIA 604-5
Manufacturer	US Conec

FO Adapters

Type	LC Quad
Application	Singlemode OS2 PC
Design	with flange
Footprint	SC Duplex
Color	Blue
Material	Plastic
Sleeve	Zirconia Straight Split

tML[®] Xtended - FO Module 5HP black 2x MPO/MTP[®] without Pins/12x LC Duplex 9/125 μ OS2

Shutter	--
Manufacturer	tde

FO Connectors

The end faces of the connectors are optimized by means of Lasercleaving and machine polish. The MPO/MTP[®] plug has a defined fiber height of 1 - 3.5 μ . The max. adjacent fiber height difference is 0.2 μ m and for all fibers 0.3 μ m.

Connector

Type	MPO/MTP [®] Female Push Pull Locking (Green)
Ferrule	12 Fiber SM Elite [®] ferrule, PPS
Boot colour	Black
Temperature range	-40°C bis +75°C
Manufacturer	tde/US Conec

Optical Performance

Fiber	Type	Wavelength	Insertion loss typ.	Insertion loss max.	Return loss min.
9/125 μ OS2	MPO/MTP [®] APC	1310 / 1550 nm	≤ 0.10 dB	0.20 dB	75 dB

FO Connectors

Connector Type	LC UPC Unibody Simplex
Housing	Plastic, Blue
Ferrule	Zirconia Straight Split, Spring-loaded Axially
Ferrul Hole	125.5 μ
Ferrule Concentricity	≤ 0.6 μ
Mating Cycles	500
Operating temperature	-40°C up to +75°C
Strain Relief to	100 N
Manufacturer	tde

Optical performance

Fiber	Type	Wavelength	Insertion loss typ.	Insertion loss max.	Return loss min.
9/125 μ	LC UPC	1310 / 1550 nm	≤ 0.10 dB	0.25 dB	55 dB

FO Fiber

Type	Corning SMF-28e+ [®] 09/125 μ OS2 G.652.D singlemode fiber
------	---

tML® Xtended - FO Module 5HP black 2x MPO/MTP® without Pins/12x LC Duplex 9/125µ OS2

Maximum Attenuation	At 1310 nm max. 0.33 - 0.35 dB/km At 1383 ± 3 nm max. 0.31 - 0.35 dB/km At 1490 nm max. 0.21 - 0.24 dB/km At 1550 nm max. 0.19 - 0.20 dB/km At 1625 nm max. 0.20 - 0.23 dB/km
Attenuation vs. Wavelength	Range: 1285 - 1330 nm; Ref. λ: 1310 nm; Max. Difference: 0.03 dB/km Range: 1525 - 1575 nm; Ref. λ: 1550 nm; Max. Difference: 0.02 dB/km
Macrobend Loss	Mandrel Diameter:32mm; Number of Turns: 1; Wavelength: 1550nm; Induced Attenuation: ≤0.03 dB Mandrel Diameter:50mm; Number of Turns: 100; Wavelength: 1310nm; Induced Attenuation: ≤0.03 dB Mandrel Diameter:50mm; Number of Turns: 100; Wavelength: 1550nm; Induced Attenuation: ≤0.03 dB Mandrel Diameter:60mm; Number of Turns: 100; Wavelength: 1625nm; Induced Attenuation: ≤0.03 dB
Point Discontinuity	Wavelength: 1310 nm; Point Discontinuity: ≤ 0.05 dB Wavelength: 1550 nm; Point Discontinuity: ≤ 0.05 dB
Cable Cutoff Wavelength (λ _{ccf})	λ _{ccf} ≤ 1260 nm
Mode-Field Diameter	At 1310 nm = 9.2 ± 0.4 µm At 1550 nm = 10.4 ± 0.5 µm
Dispersion	At 1550 nm = ≤ 18.0 [ps/(nm*km)] At 1625 nm = ≤ 22.0 [ps/(nm*km)]
	Zero Dispersion Wavelength (λ ₀): 1310 nm ≤ λ ₀ ≤ 1324 nm Zero Dispersion Slope (S ₀): ≤ 0.092 ps/(nm² *km)
Polarization Mode Dispersion (PMD)	PMD Link Design Value = ≤ 0.06 ps/√km Maximum Individual Fiber = ≤ 0.1 ps/√km
Norm	ITU-T Recommendation G.652 (Tables A, B, C, and D) IEC Specifications 60793-2-50 Type B1.3 TIA/EIA 492-CAAB Telcordia Generic Requirements GR-20-CORE ISO 11801 OS2

Dimensional Specifications

Fiber Curl	≥ 4.0 m radius of curvature
Cladding Diameter	125.0 ± 0.7 µm
Core-Clad Concentricity	≤ 0.5 µm
Cladding Non-Circularity	≤ 0.7%
Coating Diameter	242 ± 5 µm
Coating-Cladding Concentricity	< 12 µm

Environmental Specifications

Environmental Test	Test Condition	Induced Attenuation 1310 nm, 1550 nm & 1625 nm
Temperature Dependence	-60°C to +85°C	≤ 0.05
Temperature Humidity Cycling	-10°C to +85°C up to 98% RH	≤ 0.05
Water Immersion	23°C ± 2°C	≤ 0.05
Heat Aging	85°C ± 2°C	≤ 0.05
Operating Temperature Range	-60°C to +85°C	

Mechanical Specifications

Proof Test	The entire fiber length is subjected to a tensile stress ≥ 100 kpsi (0.7 GPa).
------------	--

tML[®] Xtended - FO Module 5HP black 2x MPO/MTP[®] without Pins/12x LC Duplex 9/125 μ OS2

Length	Fiber lengths available up to 63.0 km/spool.
--------	--

Performance Characterizations

Core Diameter	8.2 μ m
Numerical Aperture	0.14
Zero Dispersion Wavelength (λ_0)	1317 nm
Zero Dispersion Slope (S_0)	0.088 ps/(nm ² *km)
Effective Group Index of Refraction	1310 nm: 1.4676 1550 nm: 1.4682
Fatigue Resistance Parameter (nd)	20
Coating Strip Force	Dry: 0.6 lbs (3N) Wet: 14 days room temperature: 0.6 lbs (3N)
Rayleigh Backscatter Coefficient (for 1 ns Pulse Width)	1310 nm: -77 dB 1550 nm: -82 dB

Product variants & accessories

Art.-No.	Description
TML-T12LCAD/MP09E-XS	tML [®] Xtended - FO Module 5HP black 2x MPO/MTP [®] without Pins/12x LC APC Duplex 9/125 μ OS2
TML-T12LCDK/MP09E-XS	tML [®] Xtended - FO Module 5HP black 2x MPO/MTP [®] without Pins/12x LC Duplex 9/125 μ OS2
TML-T12LCDK/MP50G4XS	tML [®] Xtended - FO Module 5HP black 2x MPO/MTP [®] without Pins/12x LC Duplex 50/125 μ OM4
TML-T12LCDS/MP50G5XS	tML [®] Xtended - FO Module 5HP black 2x MPO/MTP [®] without Pins/12x LC Duplex w. shutter 50/125 μ OM5