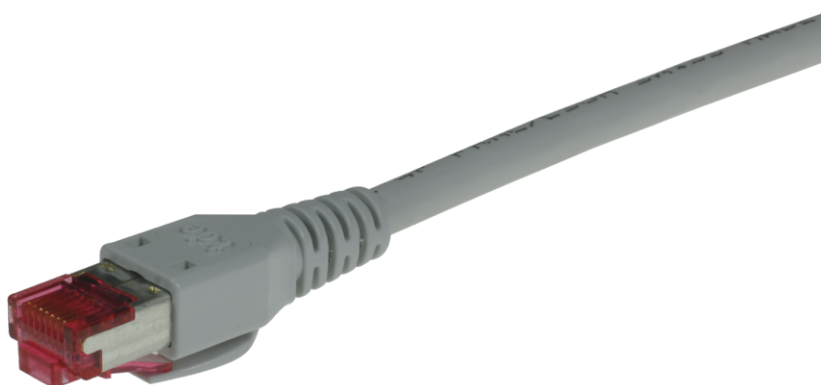


S/FTP Patch cord RJ45 Hirose w. tde boot Cat.6 UC900 LSHF Crossover Colour: grey, Length: xxxx



tde - TP cable assemblies

The tde patch and trunk cables are manufactured completely at the German facility in Ohrte. Production processes at tde meet the latest standards. The patch cables and trunk cables are manufactured in many different configurations using highly automated processes. The range of products on offer encompasses the entire spectrum of connector types available on the market. To guarantee consistently top quality, only the best components from renowned vendors are used. All tde production staff have the necessary qualifications and education, and have been well trained in using specialist technical equipment.

Each cable application is subjected to a full test procedure and a final visual inspection to ensure that only 100% error-free products are shipped to the customer.

Products made by tde perform at least internationally accepted quality standards and norms. The quality management system is ISO 9001, ISO 14001 and TL9000 certified.

RJ45 Patch cord for the employment in the distribution frame or for the connection of terminals.



tde[®] trans data elektronik GmbH

Headquarter address:

Lingener Str. 2
D-49626 Bippen/Ohrte
Tel.: +49 5435 9511 0
Fax.: +49 5435 9511 32

Sales office address:

Prinz-Friedrich-Karl-Str. 46
D-44135 Dortmund
Tel.: +49 231 8805 61 13
Fax.: +49 231 8805 61 15

info@tde.de | www.tde.de

S/FTP Patch cord RJ45 Hirose w. tde boot Cat.6 UC900 LSHF Crossover Colour: grey, Length: xxxx

Technical Data

Cabletype	Draka UC900 SS27 Cat.7
Configuration	1:1
Tests	100% electrical test on short-circuit and visual final inspection
	optional: Link Performance Tests
	QS-Managementsystem ISO 9001, ISO 14001 and TL 9000

xxxx = Length in cm

Connectors

Type	RJ45 (TM21), with integreted dwell lever protection, grey
Category	Cat.6
Shielding	shielded
Dimensions Boot	34 mm length
	13.4 mm width
Manufacturer	Hirose (connector)
	tde (boot)
QS-Management Systems Certification	ISO 9001
	ISO 14001
	TL 9000

TP Cable

Standards	EN 50173-1
	EN 50288-4-2
	ISO/IEC 11801
	IEC 61156-6
Flame resistance LSHF (FRNC)	IEC 60332-1
	IEC 60754-2
	IEC 61034
Reaction to fire (Euroclasses)	E _{ca}

Construction

Type	UC900 SS27 Cat.7 S/FTP
Conductor	stranded bare copper wire Ø 0.42 mm (AWG 27/7)
Insulation	Foam Skin Polyethylene, Ø 0.98 mm
Twisting	2 cores to the pair
Pair screen	Al-laminated plastic foil
Cable lay up	4 pairs (PiMF) to the core
Screen	Copper braid, tinned

S/FTP Patch cord RJ45 Hirose w. tde boot Cat.6 UC900 LSHF Crossover Colour: grey, Length: xxxx

Sheath	LSHF, grey
--------	------------

Mechanical properties

Minimum bending radius	Without load	≥ 25 mm
	With load	≥ 50 mm
Temperature range	During operation	-20°C up to +60°C
	During installation	0°C up to +50°C

Electrical properties at 20°C ± 5°C

Loop resistance		≤ 340 Ω/km
Resistance unbalance		≤ 3%
Insulation resistance	500 V	≥ 2000 MΩkm
Mutual capacitance	at 800 Hz	Nom. 43 nF/km
Capacitance unbalance	(pair/ground)	≤ 1500 pF/km
Mean characteristic impedance	100 MHz	100 ± 5 Ω
Nominal velocity of propagation		ca. 79%
Propagation delay		≤ 427 ns/100m
Delay skew		≤ 12 ns/100m
Test voltage	(DC, 1 min) core/core and core/screen	1000 V
Transfer impedance	at 1 MHz	10 mΩ/m
	at 10 MHz	10 mΩ/m
	at 30 MHz	30 mΩ/m
Coupling attenuation		85 dB

Electrical Data (nominal) acc. to Cat.7 (at 20°C)

F	Attenuation	NEXT	PS-NEXT	ACR	ELFEXT	PS-ELFEXT	Return loss
MHZ	dB/10m	dB	dB	dB/100m	dB/100m	dB/100m	dB
1,0	0,3	90	87	90	80	77	23
4,0	0,6	90	87	89	80	77	24
10,0	1,0	90	87	89	80	77	25
16,0	1,3	90	87	89	76	73	25
20,0	1,4	90	87	89	74	71	25
31,2	1,8	90	87	88	70	67	25
62,5	2,6	90	87	87	64	61	23
100,0	3,2	87	84	84	60	57	21
125,0	3,6	85	82	81	58	55	20
155,5	4,0	84	81	80	56	53	19
175,0	4,3	83	80	79	55	52	19
200,0	4,6	82	79	77	54	51	18
250,0	5,1	81	78	76	52	49	18
300,0	5,6	80	77	74	50	47	17

S/FTP Patch cord RJ45 Hirose w. tde boot Cat.6 UC900 LSHF Crossover Colour: grey, Length: xxxx

450,0	6,9	77	74	70	47	44	17
600,0	7,9	75	72	67	44	41	17
750,0	8,7	73	70	64	42	39	
900,0	9,7	72	69	62	41	38	
1000,0	10,2	71	68	61	40	37	

Outer diameter	5.9 mm
Fire load	349 MJ/km
	0.097 kWh/m
Weight	39 kg/km
Copper content	24
Tensile force	100 N

Product variants & accessories

Art.-No.	Description
SS-H6ZBLE-NBLxxxx	S/FTP Patch cord RJ45 Hirose w. tde boot Cat.6 UC900 LSHF Crossover Colour: blue, Length: xxxx
SS-H6ZGEE-NGExxxx	S/FTP Patch cord RJ45 Hirose w. tde boot Cat.6 UC900 LSHF Crossover Colour: yellow, Length: xxxx
SS-H6ZGNE-NGNxxxx	S/FTP Patch cord RJ45 Hirose w. tde boot Cat.6 UC900 LSHF Crossover Colour: green, Length: xxxx
SS-H6ZGRE-NGRxxxx	S/FTP Patch cord RJ45 Hirose w. tde boot Cat.6 UC900 LSHF Crossover Colour: grey, Length: xxxx
SS-H6ZORE-NORxxxx	S/FTP Patch cord RJ45 Hirose w. tde boot Cat.6 UC900 LSHF Crossover Colour: orange, Length: xxxx
SS-H6ZRTE-NRTxxxx	S/FTP Patch cord RJ45 Hirose w. tde boot Cat.6 UC900 LSHF Crossover Colour: red, Length: xxxx
SS-H6ZSWE-NSWxxxx	S/FTP Patch cord RJ45 Hirose w. tde boot Cat.6 UC900 LSHF Crossover Colour: black, Length: xxxx
SS-H6ZVIE-NVIxxxx	S/FTP Patch cord RJ45 Hirose w. tde boot Cat.6 UC900 LSHF Crossover Colour: purple, Length: xxxx