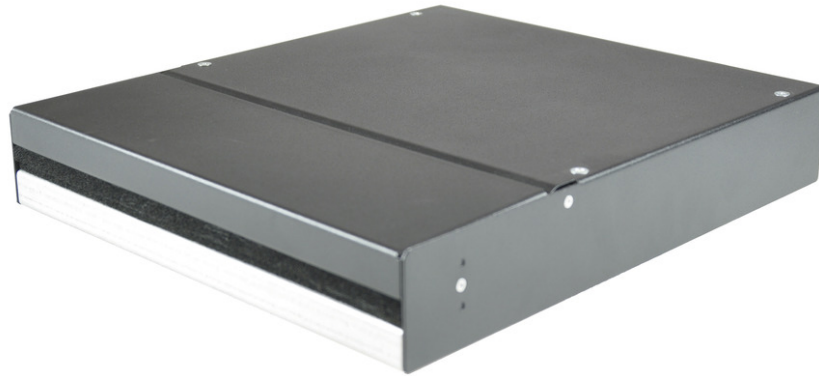


tML[®] - Consolidationpoint-Housing for up to 4x CU- or FO-modules, grey



Note: pay attention to the colors specified in the item description

tML[®] tde Modular Link

tML[®] is a patented, modular cabling system consisting of the three key components module, trunk cable and rack mount enclosure. The system components are 100 percent manufactured, pre-assembled and tested in Germany. They enable plug-and-play installation on site – especially in data centres, but also in industrial environments – within the shortest possible time. Heart of the system are the rear MPO/MTP[®] and Telco connectors, which can be used to connect at least six or twelve ports at a time. Depending on the module configuration, transfer rates of up to 400G are currently possible with SR4. The fibre optic and TP modules can be used together in a module carrier with a very high port density. The tde offers its tML[®] cabling system as a proven tML[®] standard system and in the highly innovative variants tML[®] 12, tML[®] 24, tML[®] 32 and now tML[®] 24+ System for extreme scalability and very easy migration to higher transmission rates such as 40G, 100G, 200G, 400G and 800G and more.

- Elegant housing for wall-, ceiling- and floormounting
- FO- and copper applications
- tML[®] compatible
- Construction for various applications



tde[®] trans data elektronik GmbH

Headquarter address:

Lingener Str. 2
D-49626 Bippen/Ohrte
Tel.: +49 5435 9511 0
Fax.: +49 5435 9511 32

Sales office address:

Prinz-Friedrich-Karl-Str. 46
D-44135 Dortmund
Tel.: +49 231 8805 61 13
Fax.: +49 231 8805 61 15

info@tde.de | www.tde.de

tML[®] - Consolidationpoint-Housing for up to 4x CU- or FO-modules, grey

- Cable In- and output (single strain relief) possible

Technical Data

Housing	For 10", consisting of: bottom tray with strain relief on both sides and cover with dust caps and sealing lips
Front panel	for up to 4x CU- or FO-modules
Dimensions	50 x 260 x 300 mm (HxWxD)
Material	Steel 1203
Colour	RAL 7035 (grey)

Product variants & accessories

Art.-No.	Description
TML-CONS10/1HE-GR	tML [®] - Consolidationpoint-Housing for up to 4x CU- or FO-modules, grey
TML-CONS10/1HE-SW	tML [®] - Consolidationpoint-Housing for up to 4x CU- or FO-modules, black
TML-CONS19/1HE-GR	tML [®] - Consolidationpoint-Housing for up to 8x CU- or FO-modules, grey
TML-CONS19/1HE-SW	tML [®] - Consolidationpoint-Housing for up to 8x CU- or FO-modules, black
TML-CONS3HE/8TE-GR	tML [®] - Consolidationpoint-Housing for up to 2x CU- or FO-modules, grey
TML-CONS3HE/8TE-SW	tML [®] - Consolidationpoint-Housing for up to 2x CU- or FO-modules, black