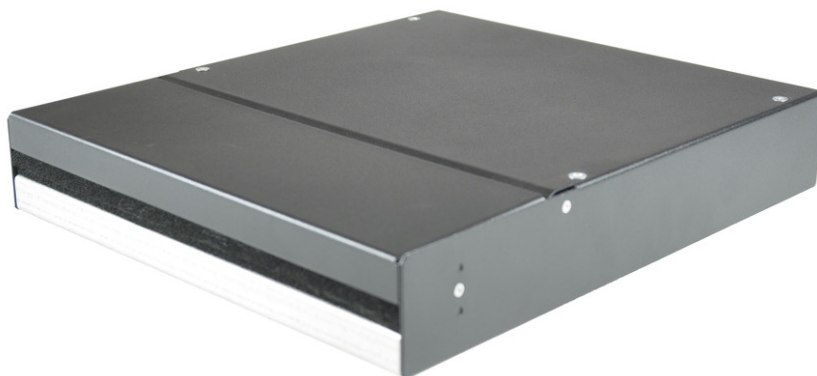


tML<sup>®</sup> - Consolidationpoint-Housing for up to 4x CU- or FO-modules, black



## tML<sup>®</sup> - tde Modular Link

tML<sup>®</sup> is a patented, modular cabling system consisting of the three key components module, trunk cable and rack mount enclosure. The system components are 100 percent manufactured, pre-assembled and tested in Germany. They enable plug-and-play installation on site – especially in data centres, but also in industrial environments – within the shortest possible time. Heart of the system are the rear MPO/MTP<sup>®</sup> and Telco connectors, which can be used to connect at least six or twelve ports at a time. Depending on the module configuration, transfer rates of up to 200G are currently possible with SR4. The fibre optic and TP modules can be used together in a module carrier with a very high port density. The tde offers its tML<sup>®</sup> cabling system as a proven tML<sup>®</sup> standard system and in the highly innovative variants tML<sup>®</sup> Xtended, tML<sup>®</sup> 24 System and now tML<sup>®</sup> 32 System for extreme scalability and very easy migration to higher transmission rates such as 40G, 100G, 200G and 400G.

- Elegant housing for wall-, ceiling- and floormounting
- FO- and copper applications
- tML<sup>®</sup> compatible
- Construction for various applications



**tde<sup>®</sup> trans data elektronik GmbH**

**Headquarter address:**

Lingener Str. 2  
D-49626 Bippen/Ohrte  
Tel.: +49 5435 9511 0  
Fax.: +49 5435 9511 32

**Sales office address:**

Prinz-Friedrich-Karl-Str. 46  
D-44135 Dortmund  
Tel.: +49 231 8805 61 13  
Fax.: +49 231 8805 61 15

info@tde.de | www.tde.de

## tML<sup>®</sup> - Consolidationpoint-Housing for up to 4x CU- or FO-modules, black

- Cable In- and output (single strain relief) possible

### Technical Data

Housing	For 10", consisting of: bottom tray with strain relief on both sides and cover with dust caps and sealing lips
Front panel	for up to 4x CU- or FO-modules
Dimensions	50 x 260 x 300 mm (HxWxD)
Material	Steel 1203
Colour	RAL 9005 (black)

### Product variants & accessories

Art.-No.	Description
TML-CONS10/1HE-GR	tML <sup>®</sup> - Consolidationpoint-Housing for up to 4x CU- or FO-modules, grey
TML-CONS10/1HE-SW	tML <sup>®</sup> - Consolidationpoint-Housing for up to 4x CU- or FO-modules, black
TML-CONS19/1HE-GR	tML <sup>®</sup> - Consolidationpoint-Housing for up to 8x CU- or FO-modules, grey
TML-CONS19/1HE-SW	tML <sup>®</sup> - Consolidationpoint-Housing for up to 8x CU- or FO-modules, black
TML-CONS3HE/8TE-GR	tML <sup>®</sup> - Consolidationpoint-Housing for up to 2x CU- or FO-modules, grey
TML-CONS3HE/8TE-SW	tML <sup>®</sup> - Consolidationpoint-Housing for up to 2x CU- or FO-modules, black