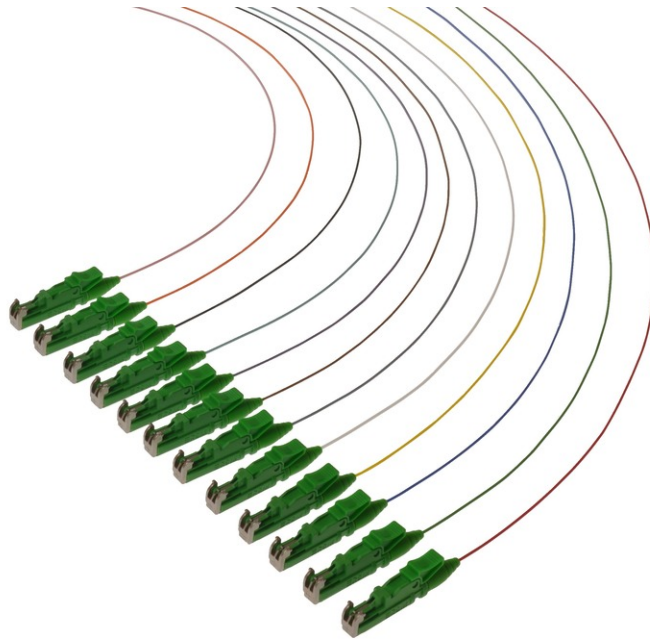


tde - FO set of Fiberpigtaills, 12x E2000 50/125μ OM4 Length: 2m



## tde - Fiber Optic Assemblies

The tde patch and trunk cables are manufactured completely at the German facility in Ohrte. Production processes at tde meet the latest standards, and the company has one of the most up-to-date fiber optic assembly houses in Europe. Fiber optic patch cables and trunk cables are manufactured in many different configurations using highly automated processes on two independent mass production lines. The range of products on offer encompasses the entire spectrum of connector types available on the market. Production capacity is around 100,000 fiber optic connectors per month, and this can be ramped up easily whenever required. To guarantee consistently top quality, only the best components from renowned vendors are used. All tde production staff have the necessary qualifications and education, and have been well trained in using specialist technical equipment such as laser cleavers and glue-dispensing robots.

Each cable application is subjected to a full test procedure comprising interferometer measurements, insertion loss and return loss measurements and a final visual inspection to ensure that only 100% error-free products are shipped to the customer.

Products made by tde perform at least internationally accepted quality standards and norms. The quality management system is ISO 9001, ISO 14001 and TL9000 certified.



**tde<sup>®</sup> trans data elektronik GmbH**

**Headquarter address:**

Lingener Str. 2  
D-49626 Bippen/Ohrte  
Tel.: +49 5435 9511 0  
Fax.: +49 5435 9511 32

**Sales office address:**

Prinz-Friedrich-Karl-Str. 46  
D-44135 Dortmund  
Tel.: +49 231 914 36 99  
Fax.: +49 231 914 31 29

info@tde.de | www.tde.de

tde - FO set of Fiberpigtaills, 12x E2000 50/125µ OM4 Length: 2m

## Technical Data

Packaging	12 pieces in the colour: violet
-----------	---------------------------------

## FO Connectors

Type	E2000
Ferrule	Ceramic
Ferrule Hole	126 µ
Connector colour	Black
Lever colour	Magenta
Boot colour	Black
Manufacturer	RDM

## Optical performance

Fiber	Type	Wavelength	Insertion loss typ.	Insertion loss max.	Return loss min.
50/125µ OM4	E2000	850 nm	≤ 0.10 dB	0.30 dB	35 dB

## FO Cables

Tight Buffer	Low smoke (IEC 61034 and EN 50268) and free of halogens (LSOH)
	Non corrosive after IEC 60754-2 and EN 50267
	Flame resistant after IEC 60332-3C and EN 50266-2-4
	Completely dry design
	Free from metal, no grounding problems and potential differences
	Tight Buffer for simple and direct connector mounting

## Characteristics

Fiber Count	1 (Tight Buffer)
Core-Ø	0.9 mm
Coreweight	1 kg/km
Min. Bending radius - Installation	30 mm
Min. Bending radius - Operation	30 mm
Removal	1500 mm
Fire load	0.15 MJ/m
Temperature range - Installation	-5 to +50°C
Temperature range - Operation	-20 to +60°C
Temperature range - Transport / Lagerung	-25 to +70°C

## FO Fiber

## tde - FO set of Fiberpigtaills, 12x E2000 50/125μ OM4 Length: 2m

Type	Corning ClearCurve® 50/125μ OM4 multimode fiber
Optimized Data Rate over Distance	40/100 Gb over 170 m* 10 Gb/s over 550 m 1 Gb/s over 1100 m
Standard Compliance	ISO/IEC 11801: type OM4 fiber** IEC 60793-2-10: type A1a.3 fiber** TIA/EIA: 492AAAD ITU: ITU G651.1
*	Distances specified in the 40G/100G per IEEE 802.3ba standard are 150m on OM4 and 100m on OM3; Corning fibers are manufactured to tighter dispersion specifications and thereby support the extended distances shown in the table (assuming cable attenuation ≤3.0 dB/km and same 1.0 dB of connector loss for OM3 that the standard requires for OM4)
**	Assumes IEC draft standard is harmonized with 492AAAD which was approved by TIA

### Optical Specifications

Bandwidth	High Performance EMB* (MHz.km): 4700 at 850 nm only Legacy Performance EMB** (MHz.km): 3500 at 850 nm / 500 at 1300 nm
Attenuation	At 850 nm max. ≤ 2.3 dB/km At 1300 nm max. ≤ 0.6 dB/km
Macrobend Loss	Mandrel Radius (mm): 37.2 / 15 / 7.5 Number of Turns: 100 / 2 / 2 Induced Attenuation (dB) at 850 nm: ≤ 0.05 / ≤ 0.1 / 0.2 Induced Attenuation (dB) at 1300 nm: ≤ 0.15 / ≤ 0.3 / ≤ 0.5
Numerical Aperture	0.200 ± 0.015
*	Ensured via miniEMBc, per TIA/EIA 455-220A and IEC 60793-1-49, for high performance laser-based systems (up to 10Gb/s)
**	OFL BW, per TIA/EIA 455-204 and IEC 60793-1-41, for legacy and LED-based systems (typically up to 100 Mb/s)

### Dimensional Specifications

Core Diameter	50.0 ± 2.5 μm
Cladding Diameter	125.0 ± 1.0 μm
Core-Clad Concentricity	≤ 1.5 μm
Cladding Non-Circularity	≤ 1.0%
Core Non-Circularity	≤ 5.0%
Coating Diameter	242 ± 5 μm
Coating-Cladding Concentricity	< 12 μm

### Environmental

Environmental Test	Test Condition	Induced Attenuation 850 nm & 1300 nm (dB/km)
Temperature Dependence	-60°C to +85°C	≤ 0.10
Temperature Humidity Cycling	-10°C to +85°C and 4% to 98% RH	≤ 0.10
Water Immersion	23°C ± 2°C	≤ 0.20
Heat Aging	85°C ± 2°C	≤ 0.20
Damp Heat	85°C at 85% RH	≤ 0.20
Operating Temperature Range	-60°C to +85°C	

## tde - FO set of Fiberpigtailes, 12x E2000 50/125 $\mu$ OM4 Length: 2m

### Mechanical Specifications

Proof Test	The entire fiber length is subjected to a tensile stress $\geq 100$ kpsi (0.7 GN/m <sup>2</sup> ).
Length	Fiber lengths available up to 17.6 km/spool.

### Performance Characterizations

Refractive Index Difference	1%
Effective Group Index of Refraction	850 nm: 1.480 1300 nm: 1.479
Fatigue Resistance Parameter (nd)	20
Coating Strip Force	Dry: 0.6 lbs (2.7N) Wet: 14 days in 23°C water soak: 0.6 lbs (2.7N)
Chromatic Dispersion	Zero Dispersion Wavelength ( $\lambda_0$ ): 1295 nm $\leq \lambda_0 \leq$ 1315 nm Zero Dispersion Slope ( $S_0$ ): $\leq 0.101$ ps/(nm <sup>2</sup> *km)

### Product variants & accessories

Art.-No.	Description
P-E2/-12x09F00200	tde - FO set of Fiberpigtailes, 12x E2000 PC 9/125 $\mu$ OS2 Length: 2m
P-E2/-12x50F3-00200	tde - FO set of Fiberpigtailes, 12x E2000 50/125 $\mu$ OM3 Length: 2m
P-E2/-12x50F4-00200	tde - FO set of Fiberpigtailes, 12x E2000 50/125 $\mu$ OM4 Length: 2m
P-E2A/-12x09F00200	tde - FO set of Fiberpigtailes, 12x E2000 APC 9/125 $\mu$ OS2 Length: 2m