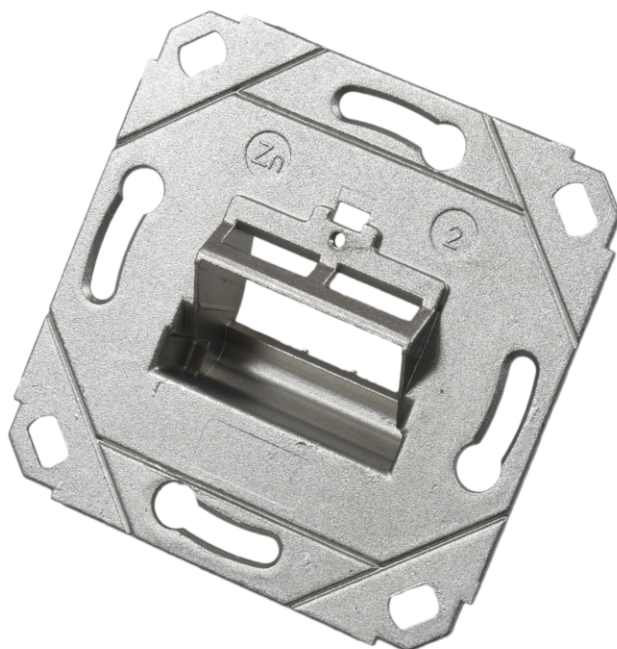


tBL® - wall outlet (open design) 45° for 2x Keystone Modules



tBL® - tde Basic Link (TP)

tBL® tde Basic Link (TP) is a complete system solution for structured cabling in Cat6A for transfer rates of up to 10GbE in real time. The tBL® - cabling link corresponds to a permanent link in accordance with ISO / IEC 11801 (EN 50173). The RJ45 modules are available in the form factors Keystone (KS) and Data Center (DC). The compact design of the 6fold RJ45 DC module allows a high packing density of up to 48 RJ45 ports on 1U. The RJ45 module is connected to the tBL® - cable termination block by simply plugging. The slim cable termination block can be easily assembled on the cable by using the tBL® - crimp tool and is suitable for preterminated cables. The modular design of individual RJ45 modules are interchangeable at any time without termination. A cost effective alternative product is the RJ45 keystone module without cable termination block in the tool-less design.

The system solution is complemented by an extensive portfolio of carrier systems. These include design-capable data outlets, floor box frames, Consolidation points, DIN rail modules and patch panels in 1/2 and 1U.

The tBL® - Open design data outlet can be combined with UAE faceplates from all major switch manufacturers. Suitable for installation in cable conduit, for flush mounting (FM), or surface mounting via separate frame. Outlets are equipped with dust protection covers, fast-on grounding and labeling area.



tde® trans data elektronik GmbH

Headquarter address:

Lingener Str. 2
D-49626 Bippen/Ohrte
Tel.: +49 5435 9511 0
Fax.: +49 5435 9511 32

Sales office address:

Prinz-Friedrich-Karl-Str. 46
D-44135 Dortmund
Tel.: +49 231 8805 61 13
Fax.: +49 231 8805 61 15

info@tde.de | www.tde.de

tBL[®] - wall outlet (open design) 45° for 2x Keystone Modules

Technical Data

Application	Installation in cable conduits, flush or surface mounting
tBL [®] - Keystone compatibility	tBL [®] - RJ45 Keystone Module Cat.6 _A ISO/IEC tool-less, AWG 22-24 (P/N TBL-RJ45KS-TL)
	tBL [®] - RJ45 Keystone Module Cat.6 _A ISO/IEC angled, AWG 22-27 (P/N TBL-RJ45KSW, TBL-RJ45KSW/KT22, TBL-RJ45KSW/KT26)

Product variants & accessories

Art.-No.	Description
TBL-RJ45KSW	tBL [®] - RJ45 Keystone Module Cat.6 _A ISO/IEC w/o termination block, angled
TBL-RJ45KSW/KT22	tBL [®] - RJ45 Keystone Module Cat.6 _A ISO/IEC, termination block AWG 22-24, angled
TBL-RJ45KSW/KT26	tBL [®] - RJ45 Keystone Module Cat.6 _A ISO/IEC, termination block AWG 26-27, angled
TBL-UP50-2RJ45KS-RW	tBL [®] - wall outlet (open design) 45° for 2x Keystone Modules incl. central plate 50x50mm, RAL9010
TBL-UPD2RJ45KS	tBL [®] - wall outlet (open design) 45° for 2x Keystone Modules