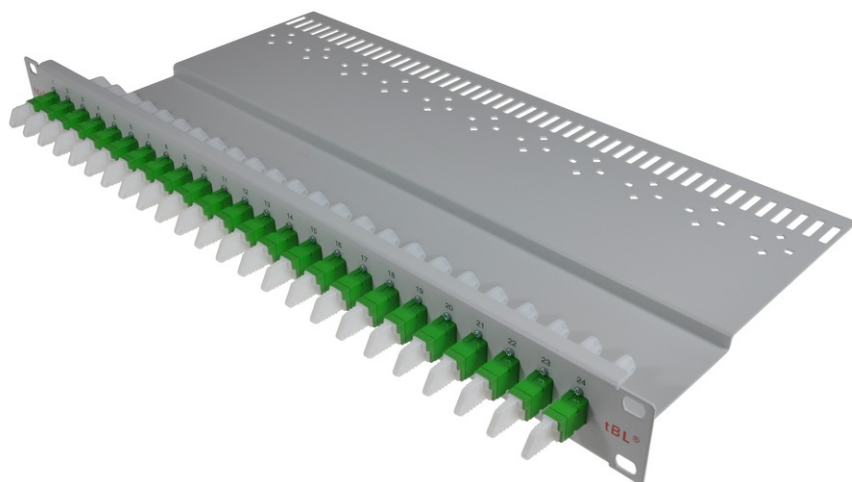


tBL<sup>®</sup> - FO breakout panel 19" 1U 12x E2000<sup>™</sup> PC Simplex Adapter, blue/blue



## tBL<sup>®</sup> - tde Basic Link (FO Enclosures)

The FO enclosures of the tBL<sup>®</sup> - tde Basic Link series are optimized products with a high functionality and an easy handling at the installation. The program includes splice and breakout boxes for 19 inch, wall and DIN rail mounting. These products are characterized by a high port density and an optimal fiber management, so that the permissible bending radii can't be undercut. Moreover, there are no sharp corners or edges, to avoid damage to the pigtails and buffer tubes. The front plates are removable. There are versions for E2000, FC, PC, LC, MPO / MTP, MTRJ, MU, SC, and ST. These products can be obtained with or without equipment. In addition, there are also special versions with IP66 for outdoor and offshore applications.



**tde<sup>®</sup> trans data elektronik GmbH**

**Headquarter address:**

Lingener Str. 2  
D-49626 Bippen/Ohrte  
Tel.: +49 5435 9511 0  
Fax.: +49 5435 9511 32

**Sales office address:**

Prinz-Friedrich-Karl-Str. 46  
D-44135 Dortmund  
Tel.: +49 231 8805 61 13  
Fax.: +49 231 8805 61 15

info@tde.de | www.tde.de

tBL<sup>®</sup> - FO breakout panel 19" 1U 12x E2000<sup>™</sup> PC Simplex Adapter, blue/blue

## Technical Data

Alternative pre-mounted	TBL-PF24-xxE2-BL (see below)
xx	(01 - 24) quantity of adapters

## FO Splice Boxes

Type	Breakout panel with cable catch
Material	Sheet steel
Color	RAL 7035
Dimensions	19" 1U 240mm depth
Labeling	1 - 24 (silk screen)
Configuration	Attachment up to 24x SC Simplex, LC Duplex, E2000 Simplex or MPO adapter

## FO Adapters

Standardisation	acc. to IEC61754-15, DIN EN 186270
Connector class	coupling Adapter
Number of connectors (A)	1
Connector type (A)	E2000 <sup>™</sup>
Protection class (IP) connector (A)	20
Polishing connector (A)	PC
Attenuation grade IL - connector (A)	C
Delta insertion loss	≤ 0.2 dB, testing method acc. to IEC 61300-3-4
Mating cycles	min. 1000
Pull-out force	min. 70 N
Connector color (A)	blue
Lever- frame-coding connector (A)	color
Frame color connector (A)	blue
Sleeve material	ceramic
Adapter fastening method	end cap
Fiber type	Singlemode (SM)
Dimensions	74.7 / 42 x 22 x 9.35 mm
Material	plastic: PBT, fiber-glass reinforced (halogen-free)
Manufacturer	R&M

Type	FO Blind stopper
Application	For covering of unused adapter slots

Type	Mounting set M5
	Set of 4 (cage nuts and screws)

tBL<sup>®</sup> - FO breakout panel 19" 1U 12x E2000<sup>™</sup> PC Simplex Adapter, blue/blue

## Product variants & accessories

Art.-No.	Description
TBL-PF24-12E2A-GN	tBL <sup>®</sup> - FO breakout panel 19" 1U 12x E2000 <sup>™</sup> APC Simplex Adapter, green/green
TBL-PF24-12E2-BL	tBL <sup>®</sup> - FO breakout panel 19" 1U 12x E2000 <sup>™</sup> PC Simplex Adapter, blue/blue