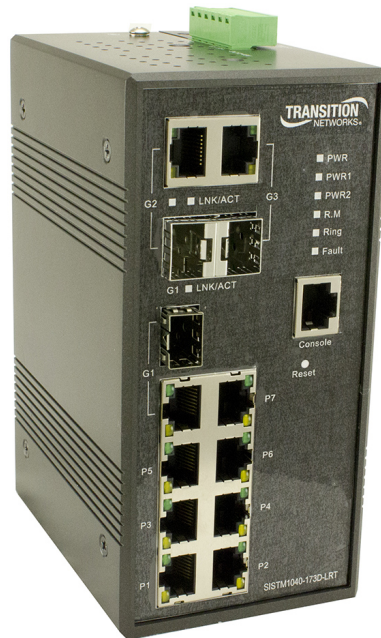


## IND MGD SWITCH (7) 10/100Base-TX + (3) 100/1000 SFP COMBO PORTS



(7) 10/100Base-TX Ports + (3) 100/1000Base-X Combo Ports

### Description

The SISTM1040-173D-LRT is a hardened managed switch in a rugged enclosure used at the edge of a hardened network to provide fast Ethernet connections. This switch has (7) 10/100Base-TX ports and (3) combo Gigabit RJ-45/SFP ports. The SFP ports will accept 100MB or Gigabit SFP modules to provide multimode or single mode fiber communications.

The SISTM1040-173D-LRT has redundant input power connections, and a fault alarm relay to ensure safe reliable operation in temperatures between -40°C and +70°C.

### Features

- Auto-Negotiation
- Auto-MDI/MDIX
- IP30 Metal Enclosure
- DIN Rail Mounting and Wall Mount Brackets Included
- Dry Contact Relay Alarm Output



**tde<sup>®</sup>** trans data elektronik GmbH

#### Hausanschrift:

Lingener Str. 2  
D-49626 Bippen/Ohrte  
Tel.: +49 5435 9511 0  
Fax.: +49 5435 9511 32

#### Vertriebsbüro:

Prinz-Friedrich-Karl-Str. 46  
D-44135 Dortmund  
Tel.: +49 231 914 36 99  
Fax.: +49 231 914 31 29

info@tde.de | www.tde.de

## IND MGD SWITCH (7) 10/100Base-TX + (3) 100/1000 SFP COMBO PORTS

- Dual Auto-Sensing Redundant DC Power Inputs
- VLAN: Part based, 802.1Q, maximum 4096 VLAN groups, Q-in-Q
- DHCP server
- Management through Web GUI/CLI/SNMP
- Port Security
- Port Trunking
- SSH/SSL
- Radius/TACACS+ authentication
- 802.1x port based access control
- 802.1p Quality of Service; TOS/Diffserv
- STP/RSTP/MSTP
- PTP Client
- IGMP v2/v3
- SNMP v1/v2/v3
- LLDP
- RMON
- Event Monitoring
- Reverse Polarity Protection

Show product on manufacturers website: <https://www.transition.com/products/switch/sistm1040-173d-lrt/>

## Technische Daten

## Specifications

## Artikelvarianten & Zubehör

Art.-Nr.	Beschreibung
SISTM1040-173D-LRT	IND MGD SWITCH (7) 10/100Base-TX + (3) 100/1000 SFP COMBO PORTS