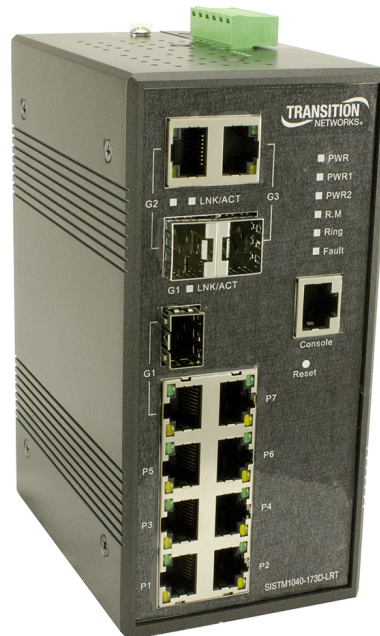


IND MGD SWITCH (7) 10/100Base-TX + (3) 100/1000 SFP COMBO PORTS



Direct Attach Cables / Active Optical Cables

A simple to install, cost-effective and interoperable solution

Often used for data center short-reach interconnects, Direct Attach, Active Copper and Active Optical Cables are an indispensable part of any network.

Terminated with transceiver-style connectors, they are designed to be used in the same ports as a typical SFP+ or QSFP transceiver, with no need for adapters or converters. Our DAC and AOC cables offer compatibility with a huge range of vendors, enabling the connectivity you need within the Top of Rack and End of Row environments.

- 10G, 25G, 40G & 100G product solutions
- Seamless interoperability with network equipment
- Multi-code options enabling different OEM vendors at each end of the cable
- 4x breakout cables, 40G QSFP+ to 4x 10G SFP and 100G QSFP28 to 4x 25G SFP28
- Fast Delivery, Custom solutions
- Compatible with Over 90 Systems
- Savings of up to 70%



tde® trans data elektronik GmbH

Headquarter address:

Lingener Str. 2
D-49626 Bippen/Ohrte
Tel.: +49 5435 9511 0
Fax.: +49 5435 9511 32

Sales office address:

Prinz-Friedrich-Karl-Str. 46
D-44135 Dortmund
Tel.: +49 231 8805 61 13
Fax.: +49 231 8805 61 15

info@tde.de | www.tde.de

IND MGD SWITCH (7) 10/100Base-TX + (3) 100/1000 SFP COMBO PORTS

(7) 10/100Base-TX Ports + (3) 100/1000Base-X Combo Ports

Description

The SISTM1040-173D-LRT is a hardened managed switch in a rugged enclosure used at the edge of a hardened network to provide fast Ethernet connections. This switch has (7) 10/100Base-TX ports and (3) combo Gigabit RJ-45/SFP ports. The SFP ports will accept 100MB or Gigabit SFP modules to provide multimode or single mode fiber communications.

The SISTM1040-173D-LRT has redundant input power connections, and a fault alarm relay to ensure safe reliable operation in temperatures between -40°C and +70°C.

Features

- Auto-Negotiation
- Auto-MDI/MDIX
- IP30 Metal Enclosure
- DIN Rail Mounting and Wall Mount Brackets Included
- Dry Contact Relay Alarm Output
- Dual Auto-Sensing Redundant DC Power Inputs
- VLAN: Port based, 802.1Q, maximum 4096 VLAN groups, Q-in-Q
- DHCP server
- Management through Web GUI/CLI/SNMP
- Port Security
- Port Trunking
- SSH/SSL
- Radius/TACACS+ authentication
- 802.1x port based access control
- 802.1p Quality of Service; TOS/Diffserv
- STP/RSTP/MSTP
- PTP Client
- IGMP v2/v3
- SNMP v1/v2/v3
- LLDP
- RMON
- Event Monitoring
- Reverse Polarity Protection

Show product on manufacturers website: <https://www.lantronix.com/products/>

Technical Data

Specifications

IND MGD SWITCH (7) 10/100Base-TX + (3) 100/1000 SFP COMBO PORTS

Product variants & accessories

| Art.-No. | Description |
|--------------------|---|
| SISTM1040-173D-LRT | IND MGD SWITCH (7) 10/100Base-TX + (3) 100/1000 SFP COMBO PORTS |