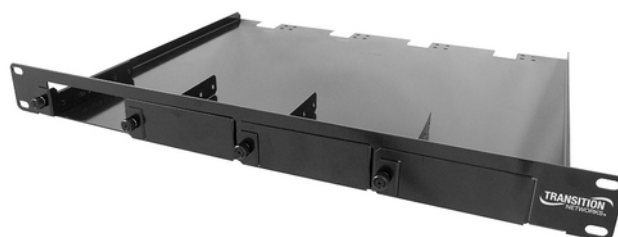


4-Slot Media Converter Shelf, includes 4 brackets and 3 slot blanks



(Media Converters Sold Separately)



Direct Attach Cables / Active Optical Cables

A simple to install, cost-effective and interoperable solution

Often used for data center short-reach interconnects, Direct Attach, Active Copper and Active Optical Cables are an indispensable part of any network.

Terminated with transceiver-style connectors, they are designed to be used in the same ports as a typical SFP+ or QSFP transceiver, with no need for adapters or converters. Our DAC and AOC cables offer compatibility with a huge range of vendors, enabling the connectivity you need within the Top of Rack and End of Row environments.

- 10G, 25G, 40G & 100G product solutions
- Seamless interoperability with network equipment
- Multi-code options enabling different OEM vendors at each end of the cable
- 4x breakout cables, 40G QSFP+ to 4x 10G SFP and 100G QSFP28 to 4x 25G SFP28
- Fast Delivery, Custom solutions
- Compatible with Over 90 Systems
- Savings of up to 70%



tde[®] trans data elektronik GmbH

Hausanschrift:

Lingener Str. 2
D-49626 Bippen/Ohrte
Tel.: +49 5435 9511 0
Fax.: +49 5435 9511 32

Vertriebsbüro:

Prinz-Friedrich-Karl-Str. 46
D-44135 Dortmund
Tel.: +49 231 8805 61 13
Fax.: +49 231 8805 61 15

info@tde.de | www.tde.de

Features

4-Slot Media Converter Shelf, includes 4 brackets and 3 slot blanks

- Clean up your stand-alone media converter installations with this 19" rack mountable shelf
- Rack mount up to 4 stand-alone devices in a 1RU unpowered shelf
- Space saving design: save rack space in low density deployments: 19" rack mount, 1RU high
- Flexible: mix and match up to 4 Transition Networks stand-alone media converters
- Including ION stand-alone converters
- Including Ethernet Extenders
- Excluding the double-high converters
- Includes 4 converter mounting brackets
- Includes 3 slot blanks to cover unused slots
- Securely mounts the converters to the shelf
- Non-powered design: don't pay for power supplies twice. This low cost design allows the use of the power supplies that ship with the media converters.
- The shelf is deep enough to hold the power supply, helping to reduce the strain on the power connections
- Power cord tie-downs: help to eliminate the accidental disconnection of power supplies from the media converters.

Technische Daten

Dimensions

- Width: 19" [482.6 mm]
- Depth: 14" [355.6 mm]
- Height: 1.75" [44.5 mm]

Weight

- 4.6 lbs. [2.08 kg]

Warranty

- Lifetime

Artikelvarianten & Zubehör

Art.-Nr.	Beschreibung
RMS19-SA4-02	4-Slot Media Converter Shelf, includes 4 brackets and 3 slot blanks