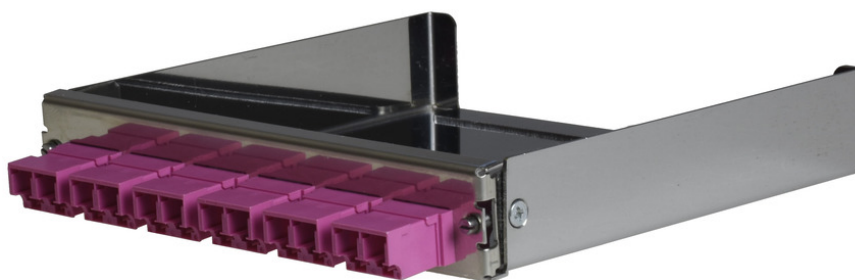


tML[®] - partial front panel with 6x LC Duplex OM4 magenta for Rack Mount Enclosure 1U extendable



tML[®] - tde Modular Link

tML[®] is a patented, modular cabling system consisting of the three key components module, trunk cable and rack mount enclosure. The system components are 100 percent manufactured, pre-assembled and tested in Germany. They enable plug-and-play installation on site – especially in data centres, but also in industrial environments – within the shortest possible time. Heart of the system are the rear MPO/MTP[®] and Telco connectors, which can be used to connect at least six or twelve ports at a time. Depending on the module configuration, transfer rates of up to 200G are currently possible with SR4. The fibre optic and TP modules can be used together in a module carrier with a very high port density. The tde offers its tML[®] cabling system as a proven tML[®] standard system and in the highly innovative variants tML[®] Xtended, tML[®] 24 System and now tML[®] 32 System for extreme scalability and very easy migration to higher transmission rates such as 40G, 100G, 200G and 400G.

The tML[®] - FO partial front panel is intended for the installation in the tML[®] Rack Mount Enclosure 1U extendable (for 8 x Modules).



tde[®] trans data elektronik GmbH

Headquarter address:

Lingener Str. 2
D-49626 Bippen/Ohrte
Tel.: +49 5435 9511 0
Fax.: +49 5435 9511 32

Sales office address:

Prinz-Friedrich-Karl-Str. 46
D-44135 Dortmund
Tel.: +49 231 8805 61 13
Fax.: +49 231 8805 61 15

info@tde.de | www.tde.de

tML® - partial front panel with 6x LC Duplex OM4 magenta for Rack Mount Enclosure 1U extendable

Technical Data

| | |
|-------------|---|
| Pre-mounted | 6 x LC Duplex adapter (magenta) |
| | QS-Managementsystem ISO 9001, ISO 14001 and TL 9000 |

| | |
|-------------|------------------------|
| Box | Galvanized steel sheet |
| Front Panel | Stainless steel |
| Dimensions | 110 x 108 x 20 mm |

F0 Adapters

| | |
|-----------------|--------------------------|
| Type | LC Duplex |
| Application | Multimode OM4 |
| Design | One-Piece without flange |
| Connector style | SC simplex |
| Color | Magenta |
| Material | Plastic |
| Sleeve | Zirkonia Staight Split |
| Shutter | -- |
| Manufacturer | tde |

Product variants & accessories

| Art.-No. | Description |
|-------------------|--|
| TML-M06LCDH-BL-A8 | tML® - partial front panel with 6x LC Duplex SM blau for Rack Mount Enclosure 1U extendable |
| TML-M06LCDH-GN-A8 | tML® - partial front panel with 6x LC Duplex SM green for Rack Mount Enclosure 1U extendable |
| TML-M06LCDH-TK-A8 | tML® - partial front panel with 6x LC Duplex OM3 aqua for Rack Mount Enclosure 1U extendable |
| TML-M06LCDH-VI-A8 | tML® - partial front panel with 6x LC Duplex OM4 magenta for Rack Mount Enclosure 1U extendable |
| TML-M06LCDS-LG-A8 | tML® - partial front panel with 6x LC Duplex w. shutter OM5 limegreen for Rack Mount Enclosure 1U extendable |