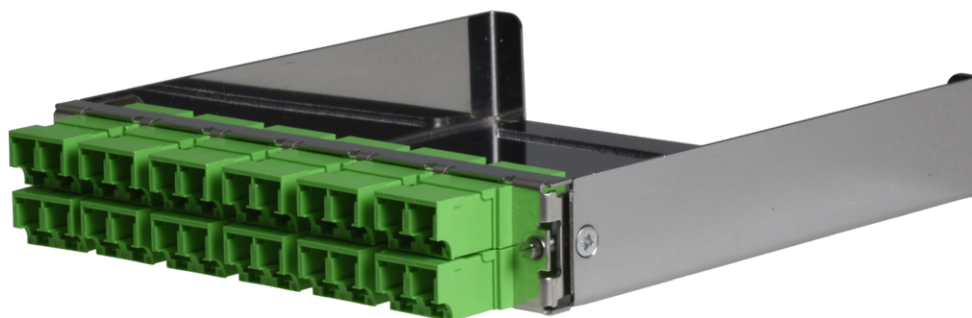


tML<sup>®</sup> - HD FO partial front panel with 12x LC Duplex OS2 green for Rack Mount Enclosure 1U extendable



## tML<sup>®</sup> 24

tML<sup>®</sup> 24 is a patented, modular cabling system consisting of the three key components module, trunk cable and rack mount enclosure. The system components are 100 percent manufactured, pre-assembled and tested in Germany. They enable plug-and-play installation on site – especially in data centres, but also in industrial environments – within the shortest possible time. Heart of the system are the rear MPO/MTP<sup>®</sup> 24 fiber and Telco connectors, which can be used to connect at least six or twelve ports at a time. Depending on the module configuration, transfer rates of up to 400G are currently possible with SR4. The fibre optic and TP modules can be used together in a module carrier with a very high port density. The tde offers its tML<sup>®</sup> cabling system as a proven tML<sup>®</sup> standard system and in the highly innovative variants tML<sup>®</sup>Xtended and now tML<sup>®</sup> 32 for extreme scalability and very easy migration to higher transmission rates such as 40G, 100G, 200G and 400G.

The tML<sup>®</sup> - FO partial front panel is intended for the installation in the tML<sup>®</sup> Rack Mount Enclosure 1U extendable (for 8 x Modules). The tML<sup>®</sup> HD partial front panel can be used only in combination with the tML<sup>®</sup> HD patch cord.



**tde<sup>®</sup> trans data elektronik GmbH**

**Headquarter address:**

Lingener Str. 2  
D-49626 Bippen/Ohrte  
Tel.: +49 5435 9511 0  
Fax.: +49 5435 9511 32

**Sales office address:**

Prinz-Friedrich-Karl-Str. 46  
D-44135 Dortmund  
Tel.: +49 231 8805 61 13  
Fax.: +49 231 8805 61 15

info@tde.de | www.tde.de

tML<sup>®</sup> - HD FO partial front panel with 12x LC Duplex OS2 green for Rack Mount Enclosure 1U extendable

## Technical Data

Pre-mounted	12 x LC Duplex adapter (green)
	QS-Managementsystem ISO 9001, ISO 14001 and TL 9000

## tML<sup>®</sup> - partial front panels

Front Panel	Stainless steel
Dimensions	108 x 20 mm

## FO Adapters

Type	LC Duplex
Application	Singlemode OS2 APC
Design	One-Piece without flange
Connector style	SC Simplex
Color	Green
Material	Plastic
Sleeve	Zirkonia Straight Split
Shutter	--
Manufacturer	tde

## Product variants & accessories

Art.-No.	Description
TML-M12LCDH-BL-A8	tML <sup>®</sup> - HD FO partial front panel with 12x LC Duplex OS2 blue for Rack Mount Enclosure 1U extendable
TML-M12LCDH-GN-A8	tML <sup>®</sup> - HD FO partial front panel with 12x LC Duplex OS2 green for Rack Mount Enclosure 1U extendable
TML-M12LCDH-TK-A8	tML <sup>®</sup> - HD FO partial front panel with 12x LC Duplex OM3 aqua for Rack Mount Enclosure 1U extendable
TML-M12LCDH-VI-A8	tML <sup>®</sup> - HD FO partial front panel with 12x LC Duplex OM4 magenta for Rack Mount Enclosure 1U extendable