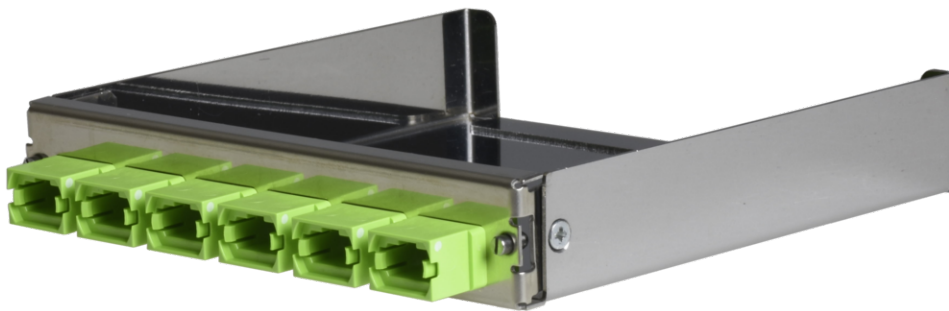


tML[®] - partial front plate with 6x MPO/MTP[®] Type A (Key Up/Down) OM5 limegreen for the Rack Mount Enclosure 1U extendable



tML[®] Direkt

tML[®] is a patented, modular cabling system consisting of the three key components module, trunk cable and rack mount enclosure. The system components are 100 percent manufactured, pre-assembled and tested in Germany. They enable plug-and-play installation on site – especially in data centres, but also in industrial environments – within the shortest possible time. Heart of the system are the rear MPO/MTP[®] and Telco connectors, which can be used to connect at least six or twelve ports at a time. Depending on the module configuration, transfer rates of up to 400G are currently possible with SR4. The fibre optic and TP modules can be used together in a module carrier with a very high port density. The tde offers its tML[®] cabling system as a proven tML[®] standard system and in the highly innovative variants tML[®] 12, tML[®] 24, tML[®] 32 and now tML[®] 24+ System for extreme scalability and very easy migration to higher transmission rates such as 40G, 100G, 200G, 400G and 800G and more.

The tML[®] - FO partial front panel is intended for the installation in the tML[®] Rack Mount Enclosure 1U extendable (for 8 x Modules). The tML[®] HD partial front panel can be used only in combination with the tML[®] HD patch cord.



tde[®] trans data elektronik GmbH

Headquarter address:

Lingener Str. 2
D-49626 Bippen/Ohrte
Tel.: +49 5435 9511 0
Fax.: +49 5435 9511 32

Sales office address:

Prinz-Friedrich-Karl-Str. 46
D-44135 Dortmund
Tel.: +49 231 8805 61 13
Fax.: +49 231 8805 61 15

info@tde.de | www.tde.de

tML[®] - partial front plate with 6x MPO/MTP[®] Type A (Key Up/Down) OM5 limegreen for the Rack Mount Enclosure 1U extendable

Technical Data

Pre-mounted	6 x MPO/MTP [®] Adapter (limegreen)
	QS-Managementsystem ISO 9001, ISO 14001 and TL 9000

tML[®] - partial front panels

Front Panel	Stainless steel
Dimensions	108 x 20 mm

FO Adapters

Type	MPO/MTP [®]
Application	Multimode OM5
Design	without Flange
Connector style	SC Simplex
Key Orientation	Type A, Key up/down
Color	Limegreen
Material	Plastic
Sleeve	--
Shutter	--
Standards	IEC 61754-7 TIA 604-5
Manufacturer	US Conec

Product variants & accessories

Art.-No.	Description
TML-M06MP-GN-A8	tML [®] - partial front plate with 6x MPO/MTP [®] Type A (Key Up/Down) OS2 green for the Rack Mount Enclosure 1U extendable
TML-M06MP-GR-A8	tML [®] - partial front plate with 6x MPO/MTP [®] Type B (Key Up/Up) for the Rack Mount Enclosure 1U extendable
TML-M06MP-LG-A8	tML [®] - partial front plate with 6x MPO/MTP [®] Type A (Key Up/Down) OM5 limegreen for the Rack Mount Enclosure 1U extendable
TML-M06MP-TK-A8	tML [®] - partial front plate with 6x MPO/MTP [®] Type A (Key Up/Down) OM3 aqua for the Rack Mount Enclosure 1U extendable
TML-M06MP-VI-A8	tML [®] - partial front plate with 6x MPO/MTP [®] Type A (Key Up/Down) OM4 magenta for the Rack Mount Enclosure 1U extendable