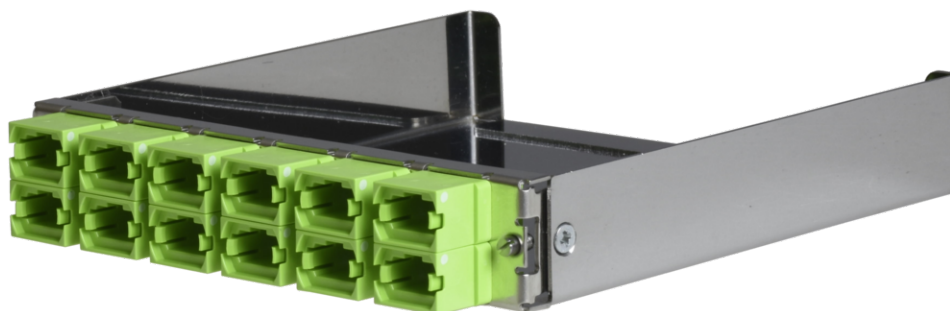


tML® - partial front plate with 12x MPO/MTP® Type A (Key Up/Down) OM5 Limegreen for the Rack Mount Enclosure 1U extendable



## tML® 24

tML® 24 is a patented, modular cabling system consisting of the three key components module, trunk cable and rack mount enclosure. The system components are 100 percent manufactured, pre-assembled and tested in Germany. They enable plug-and-play installation on site – especially in data centres, but also in industrial environments – within the shortest possible time. Heart of the system are the rear MPO/MTP® 24 fiber and Telco connectors, which can be used to connect at least six or twelve ports at a time. Depending on the module configuration, transfer rates of up to 400G are currently possible with SR4. The fibre optic and TP modules can be used together in a module carrier with a very high port density. The tde offers its tML® cabling system as a proven tML® standard system and in the highly innovative variants tML®Xtended and now tML® 32 for extreme scalability and very easy migration to higher transmission rates such as 40G, 100G, 200G and 400G.

The tML® - FO partial front panel is intended for the installation in the tML® Rack Mount Enclosure 1U extendable (for 8 x Modules). The tML® HD partial front panel can be used only in combination with the tML® HD patch cord.



### **tde® trans data elektronik GmbH**

#### **Headquarter address:**

Lingener Str. 2  
D-49626 Bippen/Ohrte  
Tel.: +49 5435 9511 0  
Fax.: +49 5435 9511 32

#### **Sales office address:**

Prinz-Friedrich-Karl-Str. 46  
D-44135 Dortmund  
Tel.: +49 231 8805 61 13  
Fax.: +49 231 8805 61 15

info@tde.de | www.tde.de

tML<sup>®</sup> - partial front plate with 12x MPO/MTP<sup>®</sup> Type A (Key Up/Down) OM5 Limegreen for the Rack Mount Enclosure 1U extendable

## Technical Data

Pre-mounted	12 x MPO/MTP <sup>®</sup> Adapter (limegreen)
	QS-Managementsystem ISO 9001, ISO 14001 and TL 9000

## tML<sup>®</sup> - partial front panels

Front Panel	Stainless steel
Dimensions	108 x 20 mm

## FO Adapters

Type	MPO/MTP <sup>®</sup>
Application	Multimode OM5
Design	without Flange
Connector style	SC Simplex
Key Orientation	Type A, Key up/down
Color	Limegreen
Material	Plastic
Sleeve	--
Shutter	--
Standards	IEC 61754-7 TIA 604-5
Manufacturer	US Conec

## Product variants & accessories

Art.-No.	Description
TML-M12MP-GN-A8	tML <sup>®</sup> - partial front plate with 12x MPO/MTP <sup>®</sup> Type A (Key Up/Down) OS2 Green for the Rack Mount Enclosure 1U extendable
TML-M12MP-GR-A8	tML <sup>®</sup> - partial front plate with 12x MPO/MTP <sup>®</sup> Type B (Key Up/Up) for the Rack Mount Enclosure 1U extendable
TML-M12MP-LG-A8	tML <sup>®</sup> - partial front plate with 12x MPO/MTP <sup>®</sup> Type A (Key Up/Down) OM5 Limegreen for the Rack Mount Enclosure 1U extendable
TML-M12MP-TK-A8	tML <sup>®</sup> - partial front plate with 12x MPO/MTP <sup>®</sup> Type A (Key Up/Down) OM3 Aqua for the Rack Mount Enclosure 1U extendable
TML-M12MP-VI-A8	tML <sup>®</sup> - partial front plate with 12x MPO/MTP <sup>®</sup> Type A (Key Up/Down) OM4 Magenta for the Rack Mount Enclosure 1U extendable